



Leen Court, Nottingham  
£750 pcm



# The Trinity, Leen Court

## Nottingham

Comfort Estates are delighted to present this well-presented, fully furnished one-bedroom apartment, ideally situated in a quiet and convenient location close to the Queen's Medical Centre, the University of Nottingham, excellent transport links and a range of local amenities.

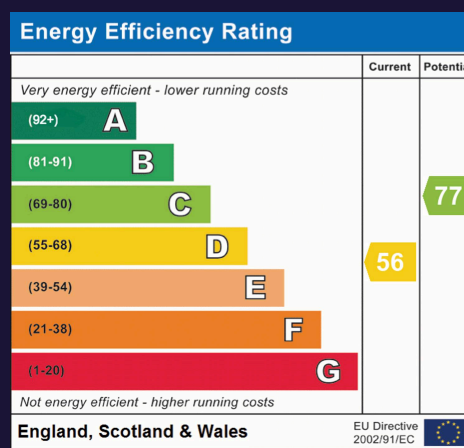
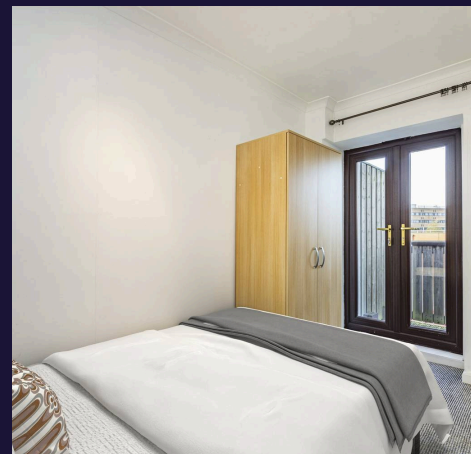
Located on the second floor of a characterful converted tannery building, the property offers well-maintained accommodation throughout. In brief, the apartment comprises an entrance hallway, a modern bathroom with shower over the bath, a small double bedroom benefitting from a private balcony, and an open-plan kitchen, dining and living space with appliances included.

The property further benefits from private permit parking and is just a short walk from the tram network, providing easy access across Nottingham.

Ideally suited to a single occupant or a medical professional seeking a convenient base close to the hospital and university.

Available from 7th August 2026.

Call Comfort Estates today to arrange your viewing.





### **Open Plan Living Area**

16' 6" x 11' 1" (5.02m x 3.37m)

The open-plan layout seamlessly incorporates the kitchen with the lounge, creating a welcoming and versatile living space. The lounge comes with a 2 seater leather sofa, desk and chest of drawers.

### **Kitchen**

16' 6" x 12' 3" (5.02m x 3.73m)

This bright, modern kitchen is designed with both style and functionality in mind, featuring sleek, contemporary cabinets, laminate counter tops. Appliances include: fridge/freezer, washing machine and stainless steel oven. The flooring throughout is a modern laminate.

### **Bedroom**

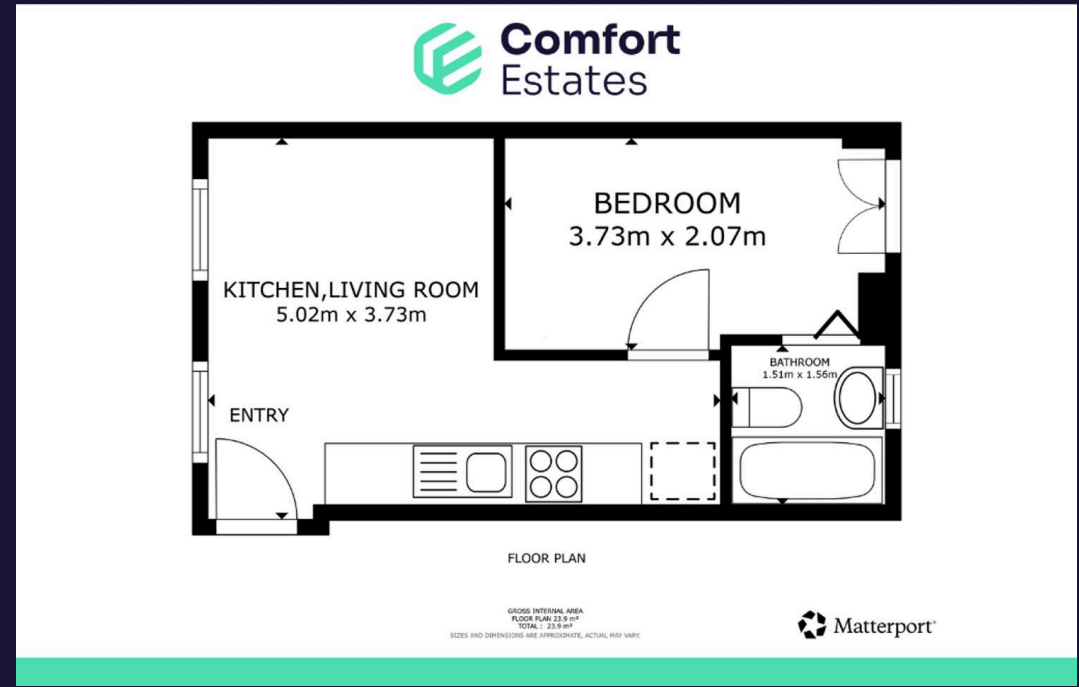
11' 1" x 6' 9" (3.37m x 2.07m)

This bright, neutrally decorated bedroom comes carpeted, with a small double bed and wardrobe. A feature of the room is the set of French Doors, which open onto a private balcony.

### **Bathroom**

4' 11" x 5' 1" (1.51m x 1.56m)

This bathroom is designed for functionality and comfort. It features a tiled floor and a three-piece bathroom suite, including shower over bath, sink and WC.





## Comfort Estates

Comfort Estates, 47 Derby Road - NG1 5AW

0115 933 8997 • [info@comfortestates.co.uk](mailto:info@comfortestates.co.uk) • [www.comfortestates.co.uk](http://www.comfortestates.co.uk)