



23 Hollow Drive

Thornton, Liverpool, L23 4TD

Prices from £366,995



The Evesham - with a SPACIOUS kitchen/dining area with FRENCH DOORS leading to the garden, while the beautiful SEPARATE LOUNGE is the perfect place to relax. The MASTER BEDROOM boasts an EN SUITE, the INTEGRATED GARAGE and CLOAKROOM complete this beautiful home.

Plot 58 INCLUDES Flooring Throughout / Wardrobes in Bed 1 & 2 / Turf to Rear

Need to sell your property? EASYMOVE scheme available, call for details.

About The Evesham

With its striking design, The Evesham is a contemporary home of true distinction. Made for modern lifestyles, The Evesham features a spacious, light and airy kitchen/dining area with French doors leading to the garden, while the beautiful separate lounge is the perfect place to relax. On the first floor, the master bedroom boasts an en suite bathroom, with two further bedrooms and a family bathroom. An integrated garage and cloakroom



Kitchen 10'10" x 10'5" (3.31 x 3.20)

Dining 11'10" x 8'10" (3.63 x 2.71)

Living 15'3" x 13'3" (4.67 x 4.05)

Cloaks 4'11" x 3'5" (1.50 x 1.05)

Garage 17'11" x 8'6" (5.48 x 2.61)

Bedroom 1 22'4" x 10'1" (6.83 x 3.09)

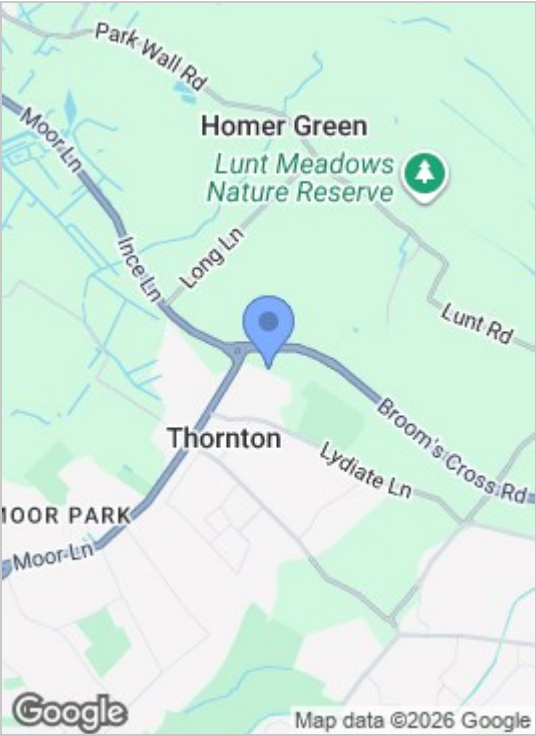
Bedroom 2 12'4" x 8'10" (3.78 x 2.71)

Bedroom 3 9'8" x 8'10" (2.96 x 2.71)

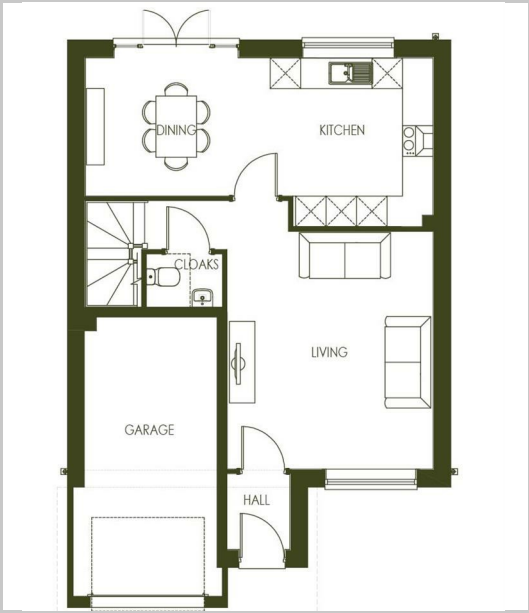
Bathroom 6'10" x 6'3" (2.09 x 1.91)

En Suite 8'2" x 3'10" (2.51 x 1.19)

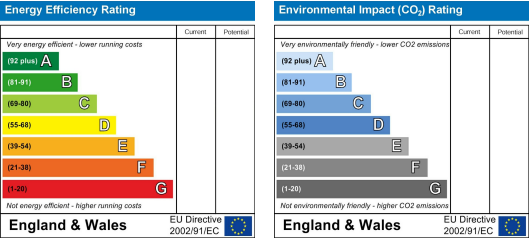
Area Map



Floor Plans



Energy Efficiency Graph



These particulars, whilst believed to be accurate are set out as a general outline only for guidance and do not constitute any part of an offer or contract. Intending purchasers should not rely on them as statements of representation of fact, but must satisfy themselves by inspection or otherwise as to their accuracy. No person in this firms employment has the authority to make or give any representation or warranty in respect of the property.