



WETHERELL
MAYFAIR'S FINEST PROPERTIES



Dunraven Street, W1K

£1,200 Per week

A beautifully presented lateral one-bedroom flat, set on the second floor of a well-maintained building with lift access. The property boasts elegant wood flooring throughout and flooded with natural daylight, creating a bright and welcoming atmosphere.

Situated on the second floor, the apartment features a separate fully fitted kitchen and a large reception room made for hosting. The spacious principal bedroom complete with an en-suite bathroom and wooden flooring throughout. The apartment comes complete with a balcony space with impressive views of Hyde Park.

Dunraven Street is perfectly located for some of London's finest restaurants, the green expanses of Hyde Park and excellent transport links, including Marble Arch and Bond Street tube stations.

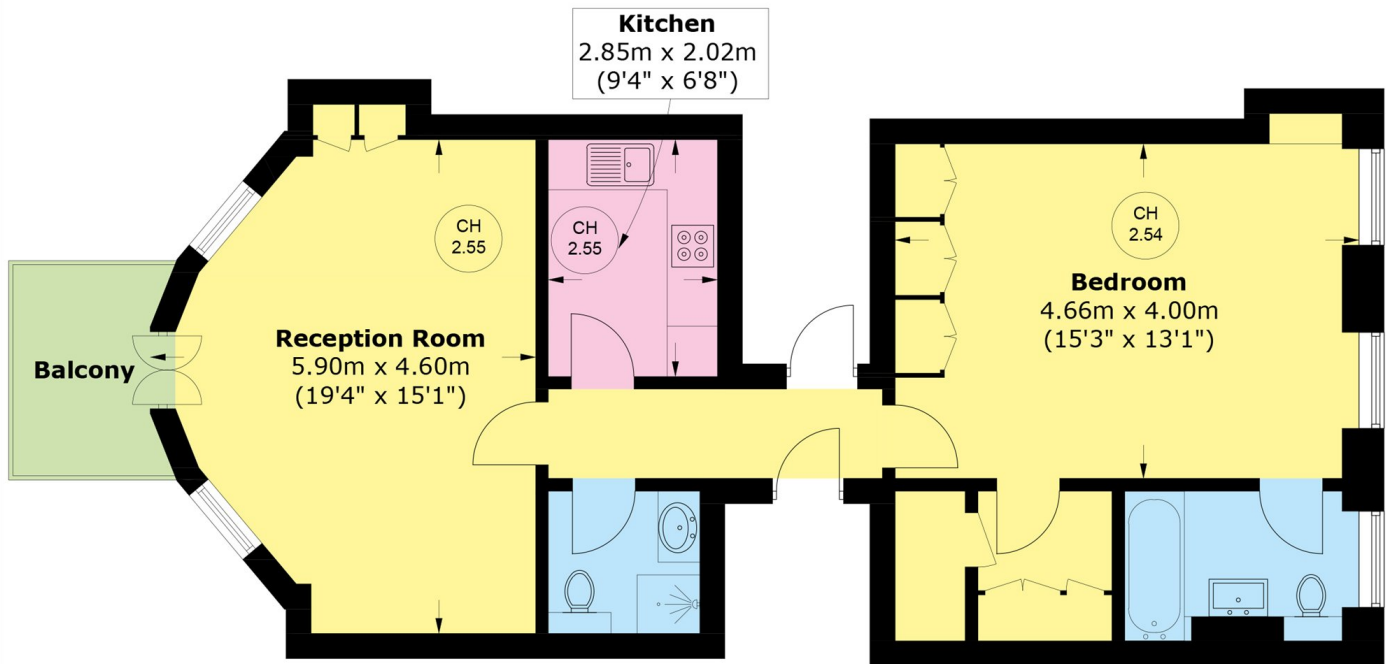


FEATURES

- Spacious Double Bedroom • Wooden Flooring • Balcony • Unfurnished • Second Floor (Lift Access) • Excellent Location •



Dunraven Street,
London, W1K



Second Floor

Total area (approx.): 69.7 sq. m (750.2 sq. ft)
Balcony: 4.3 sq. m (46.2 sq. ft)



WETHERELL
MAYFAIR'S FINEST PROPERTIES

102 Mount Street,
London, W1K 2TH

T: 020 7529 5588
E: rentals@wetherell.co.uk

We aim to make our particulars both accurate and reliable. However they are not guaranteed; nor do they form part of an offer or contract. If you require clarification on any points then please contact us, especially if you're traveling some distance to view. Please note that appliances and heating systems have not been tested and therefore no warranties can be given as to their working order.



wetherell.co.uk