

Staines Road West, TW16

£299,950

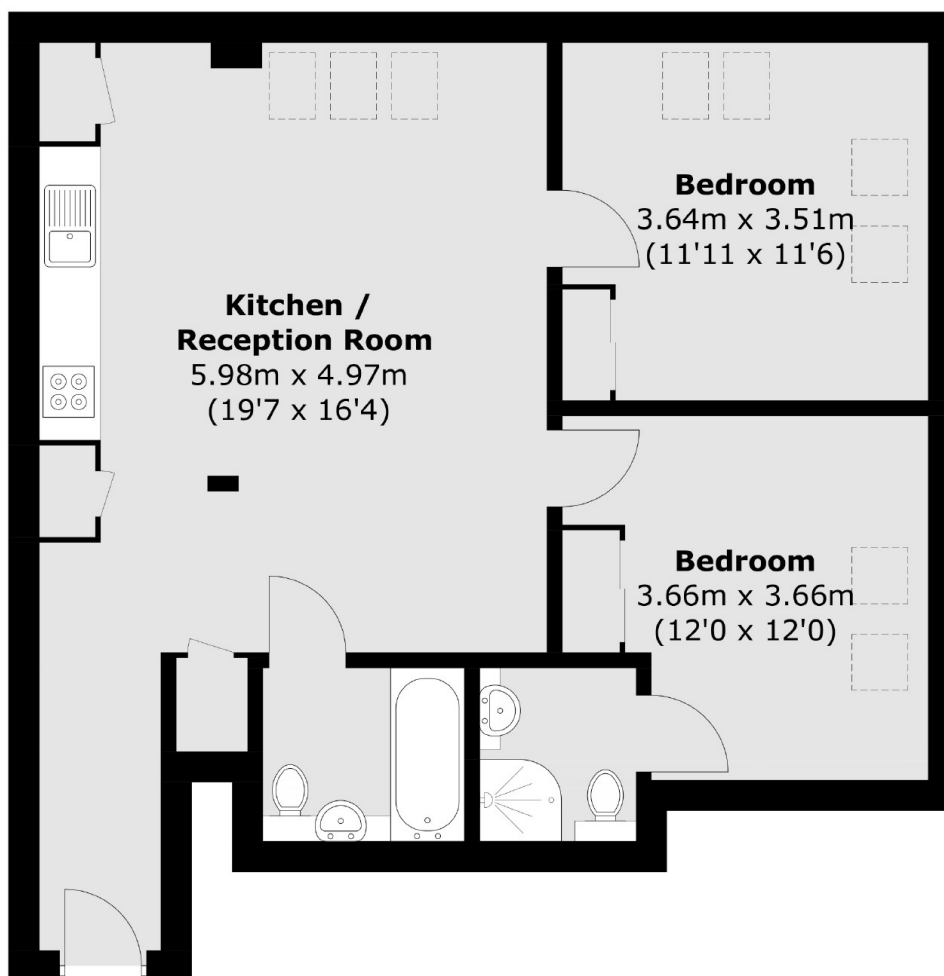
A smartly presented, two bedroom, two bathroom top floor apartment which is being sold with no forward chain. Further benefits include secure underground parking and a lift service in the building.

Grandera House is located close to Sunbury Station and the M3/A316 for easy access into London, the M25 and beyond. The local shops and amenities at Sunbury Cross are just across the road. Additionally Sunbury Park, the famous 'Walled Garden' and Cedars Recreation Ground are also close by.

Features

- Smartly Presented
- No Onward Chain
- Two Bedrooms
- Two Bathrooms
- Top Floor
- Underground Parking

Staines Road West, Sunbury-On-Thames, TW16



Total area (approx.): 66.9 sq. m (720.1 sq. ft)