



CHAPTER ROAD, NW2

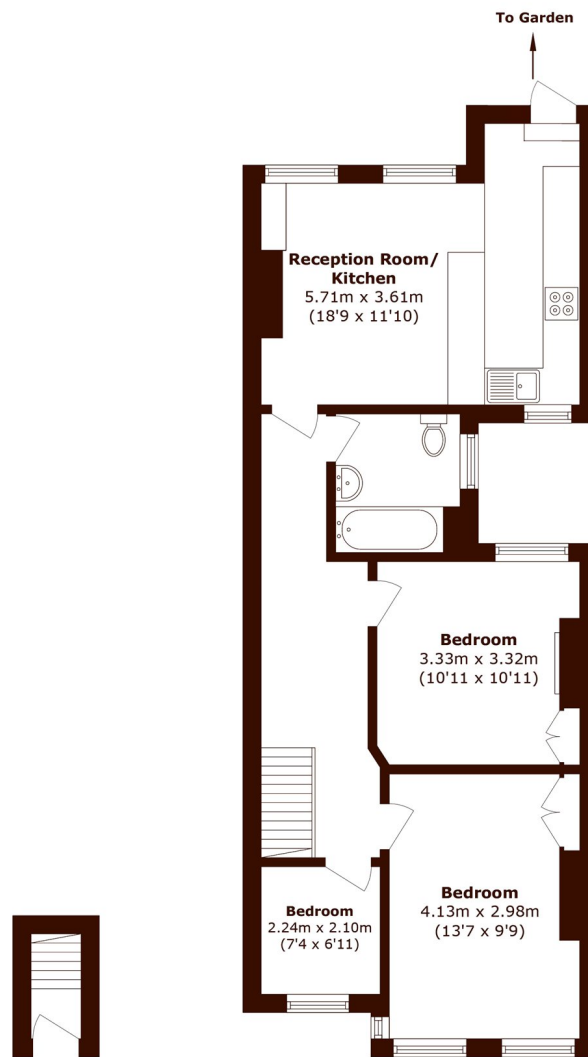
£400,000

Charming three bedroom period conversion with private garden, ideally located near Willesden Green, offering extension potential (STP) and available chain free.

Three Bedrooms
Private Garden Space
Close To Willesden Green

Period Conversion
Extension Potential STP
Chain Free

STEP INSIDE CHAPTER ROAD



Ground Floor

First Floor

Total area (approx.): 68.4 sq. m (736.2 sq. ft)

Willesden Green
020 8451 0420

Energy Rating: D We aim to make our particulars both accurate and reliable. However, they are not guaranteed; nor do they form part of an offer or contract. If you require clarification on any points then please contact us, especially if you're traveling some distance to view. Please note that appliances and heating systems have not been tested and therefore no warranties can be given as to their good working order

**MARSH &
PARSONS**