

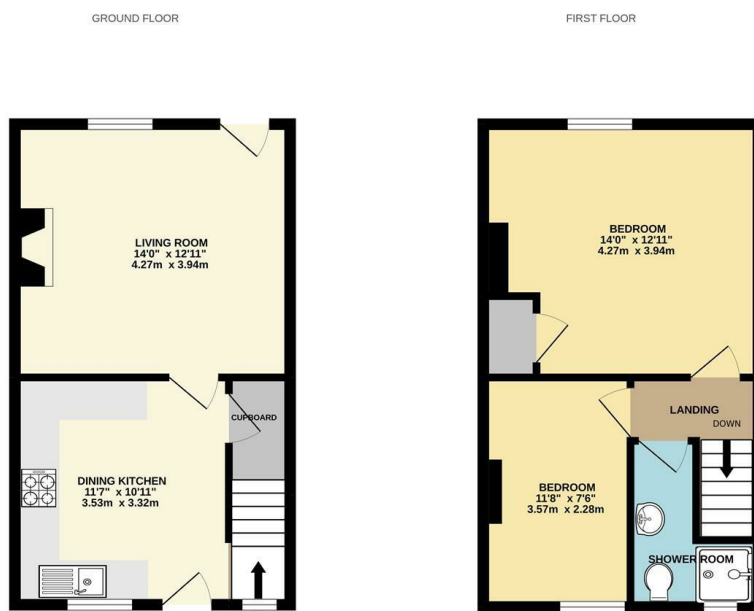


jordan fishwick

4 THE OWLERS WHALEY BRIDGE HIGH PEAK SK23 7DE
Per Calendar Month £900 Per Calendar

4 THE OWLERS WHALEY BRIDGE HIGH PEAK SK23 7DE

*** AVAILABLE WEEK COMMENCING 27th JULY *** A most charming and conveniently located property with gardens fronting onto the River Goyt in popular Whaley Bridge, a stone built mid terraced cottage of character. Spacious accommodation with Sash windows and open feature open fireplace. Comprising: living room, fitted dining kitchen with large pantry cupboard, two good sized first floor bedrooms and shower room with modern white suite. Gas central heating, delightful cottage garden and external brick stores. Unfurnished.



While every attempt has been made to ensure the accuracy of the floorplan contained here, measurements of doors, windows, rooms and any other items are approximate and no responsibility is taken for any error, omission or mis-statement. This plan is for illustrative purposes only and should be used as such by any prospective purchaser. The services, systems and appliances shown have not been tested and no guarantee is given as to their operability or efficiency can be given. Made with Metreplan (2022)

- Charming Position
- Adjoining The River Goyt
- Convenient For Whaley Bridge
- Stone Cottage
- Delightful Garden
- Two Good Bedrooms
- Available 27th July Onwards

