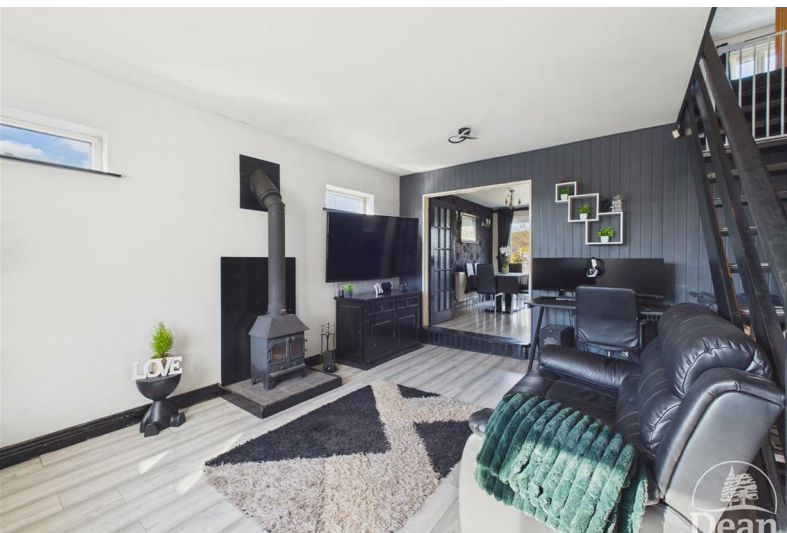




Parragate

Cinderford, GL14 2LT

£280,000

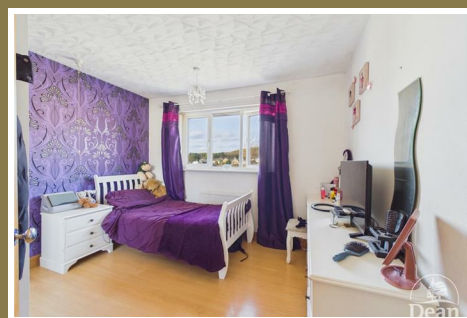


Nestled in the charming area of Parragate, Cinderford, this delightful semi-detached house offers a perfect blend of comfort and convenience. With four spacious bedrooms, this property is ideal for families or those seeking extra space for guests or a home office. The two well-appointed reception rooms provide ample room for relaxation and entertaining, ensuring that you can host gatherings with ease.

The house features a modern bathroom and En-suite, catering to the needs of a busy household while providing a touch of luxury. The layout is thoughtfully designed, allowing for both privacy and communal living, making it a wonderful place to call home.

Parking is a significant advantage, with space available for up to three vehicles, ensuring that you and your guests will never have to worry about finding a spot. The location in Cinderford offers a peaceful residential atmosphere while still being conveniently close to local amenities, schools, and parks.

This property presents an excellent opportunity for those looking to settle in a welcoming community. With its generous living space and practical features, it is sure to appeal to a wide range of buyers. Do not miss the chance to make this lovely house your new home.



Entrance Porch :

5'6 x 4.0 (1.68m x 1.22m.0.00m)

Tiled floor, double glazed window to front, half glazed door to:-

Lounge :

17'5 x 14'1 (5.31m x 4.29m)

Open tread stairs to first floor, twin panel radiator, Wood burning stove, laminate flooring, double glazed window to front, two double glazed windows to side, twin opening doors to:-

Kitchen/Diner :

13'1 x 14 (3.99m x 4.27m)

Fitted with a range of matching wall and base storage units, sink unit, gas hob, extractor hood, built-in microwave, electric oven and grill, space for fridge, breakfast bar, laminate flooring, double glazed window to rear, wall mounted combi gas boiler. Dining area has laminated floor, twin panel radiator, double glazed sliding patio doors to rear, sliding door :-

Utility Room :

7'11 x 7'10 (2.41m x 2.39m)

Wall cupboard, plumbing for washing machine and dishwasher, Laminate floor, part tiled walls, radiator, glazed door to conservatory, door to cloakroom and door Garage.

Cloakroom :

2'11 x 4'10 (0.89m x 1.47m)

Low level WC, laminate floor, part tiled walls.

Conservatory :

9'9 x 7'5 (2.97m x 2.26m)

UPVC double glazed construction, tiled floor, two radiators, door to outside.

First Floor Landing :

Walk-in airing cupboard with shelves. Access to boarded loft with ladder.

Bedroom 1 :

13'2 x 13'10 (4.01m x 4.22m)

Laminate floor, radiator, double glazed window to front, wash hand basin in vanity unit, shower cubicle.

Bedroom 2 :

13'1 x 7'11 (3.99m x 2.41m)

Laminate floor, radiator, double glazed window to front.

Bedroom 3 :

9'4 x 11.0 (2.84m x 3.35m.0.00m)

Laminate floor, radiator, double glazed window to rear.

Bedroom 4 :

9'5 x 11'0 (2.87m x 3.35m)

Laminate floor, radiator, double glazed window to rear.

Bathroom :

7'3 x 7'7 (2.21m x 2.31m)

Bath with shower attachment over, wash hand basin, shower cubicle, double glazed window to side, radiator, tiled walls, tiled floor.

Cloakroom :

2'11 x 4'10 (0.89m x 1.47m)

Low level WC, part tiled walls, extractor fan.

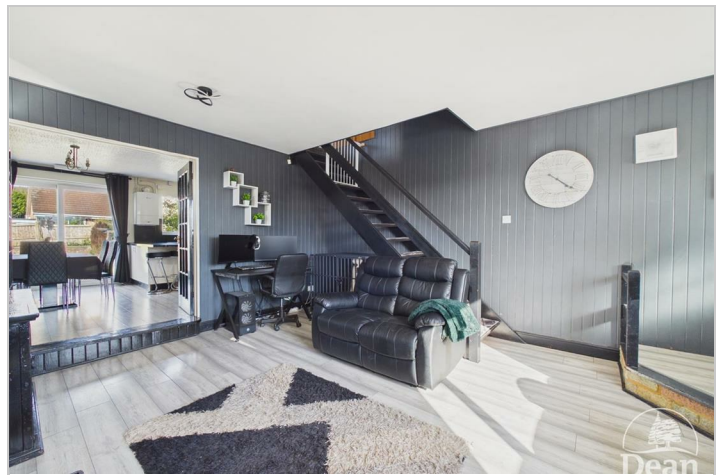
Outside :

Driveway to front and side, twin gates leading to rear garden. Separate driveway to Garage. Rear Garden with raised patio adjacent to the rear of the property, lawned gardens, deck and pergola with seat. Views of the forest in the distance.

Garage :

25'3 x 8'0 (7.70m x 2.44m)

Up and over door, courtesy door to property.



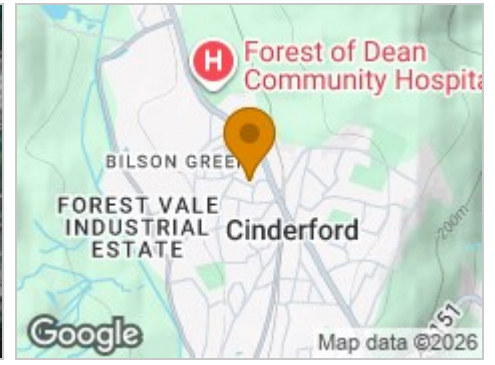
Road Map



Hybrid Map



Terrain Map



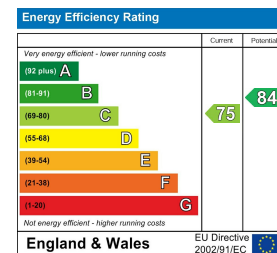
Floor Plan



Viewing

Please contact our Cinderford Office on 01594 825574 if you wish to arrange a viewing appointment for this property or require further information.

Energy Efficiency Graph



These particulars, whilst believed to be accurate are set out as a general outline only for guidance and do not constitute any part of an offer or contract. Intending purchasers should not rely on them as statements of representation of fact, but must satisfy themselves by inspection or otherwise as to their accuracy. No person in this firm's employment has the authority to make or give any representation or warranty in respect of the property.