



Mapleleaf Gardens

Wickford, Essex, SS12 0NB

Guide Price £390,000

*** GUIDE PRICE £390,000 - £410,000 ***

Cowling & Payne are delighted to present this beautifully THREE bedroom semi-detached home in a peaceful cul-de-sac of Mapleleaf Gardens, Wickford, Essex.

This property has been thoughtfully upgraded, featuring a brand-new kitchen, fresh carpets throughout all bedrooms, hallway, stairs, and entrance hall, and new vinyl flooring in the kitchen, conservatory, and bathroom—offering a modern, move-in-ready home for families or professionals alike.

On entering, you are welcomed by a bright and inviting hallway leading seamlessly into the spacious ground floor. The open-plan lounge/dining area is light-filled and perfect for both relaxing evenings and entertaining guests. The addition of a conservatory enhances the living space, bathing the room in natural light and providing a tranquil spot to enjoy garden views.

Upstairs, the property offers three generous bedrooms, each designed for comfort and restfulness. The modern family bathroom is stylish and practical, catering to all your daily needs.

Externally, the home benefits from off-street parking and a garage, offering convenient space for

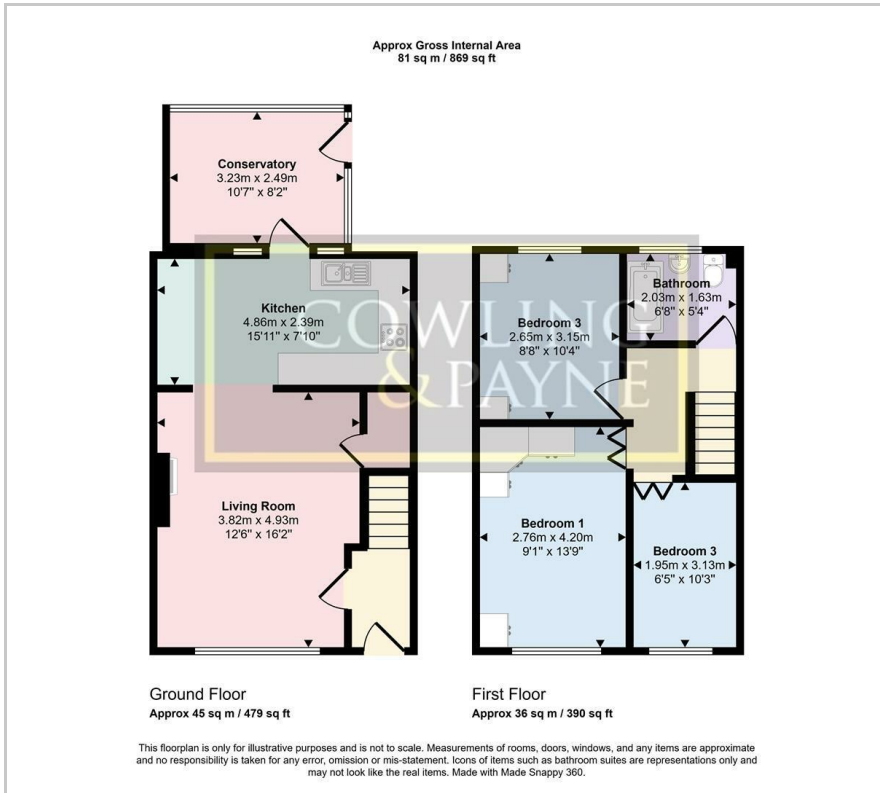
- GUIDE PRICE £390,000 - £410,000
- CHAIN FREE
- THREE BEDROOM SEMI DETACHED
- OFF STREET PARKING
- GARAGE
- NEARBY TO LOCAL SCHOOLS
- POPULAR CUL DE SAC LOCATION
- CONSERVATORY
- COUNCIL TAX BAND - C - BASILDON
- ENERGY PERFORMANCE RATING - D

Viewing

Please contact our Sales Office on 01268 730707 if you wish to arrange a viewing appointment for this property or require further information.

 3
  1
  1
  D

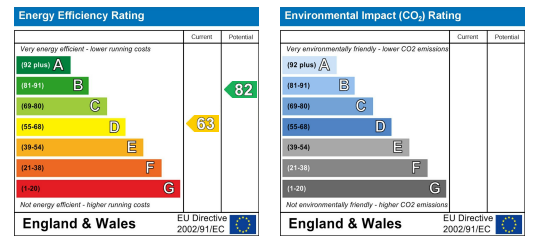
Floor Plan



Area Map



Energy Efficiency Graph



These particulars, whilst believed to be accurate are set out as a general outline only for guidance and do not constitute any part of an offer or contract. Intending purchasers should not rely on them as statements of representation of fact, but must satisfy themselves by inspection or otherwise as to their accuracy. No person in this firm's employment has the authority to make or give any representation or warranty in respect of the property.