



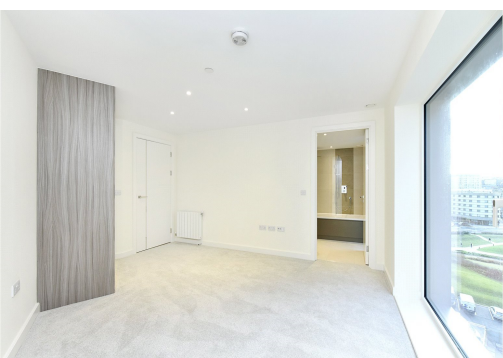
Hampton Apartments

Duke of Wellington Avenue, SE18

£1,630 pcm

A brand new two bedroom apartment in Hampton Apartments in the Royal Arsenal.

Office Image



Hampton Apartments

Duke of Wellington Avenue, SE18

- 24 Hour Concierge
- On site residents Gym



Chestertons are pleased to present this stunning brand new 2 bedroom 2 bathroom apartment situated on the 7th floor in the prestigious Royal Arsenal Riverside development.

Boasting an open plan kitchen / diner complete with integrated appliances including a dishwasher the space has floor to ceiling windows opening out on to a large balcony, the apartment benefits from great amounts of natural light. The en-suite bathroom has a bathtub, with the family bathroom having a walk in shower.

The property is well located, connecting you to the City, Canary Wharf and London City Airport whilst on site residents have access to a resident only gym, 24 hour concierge, Pharmacy, Dentist and a Nursery, not to mention the vast array of amenities situated just outside the development.

Tenure: Long Let
Furnished

Additional tenant charges apply
Tenancy Agreement Fee: £222
References per Tenant/Guarantor: £60
Inventory check (approx. £100 – £250 inc. VAT)
[chestertons.com/property-to-rent/applicable-fees](https://www.chestertons.com/property-to-rent/applicable-fees)

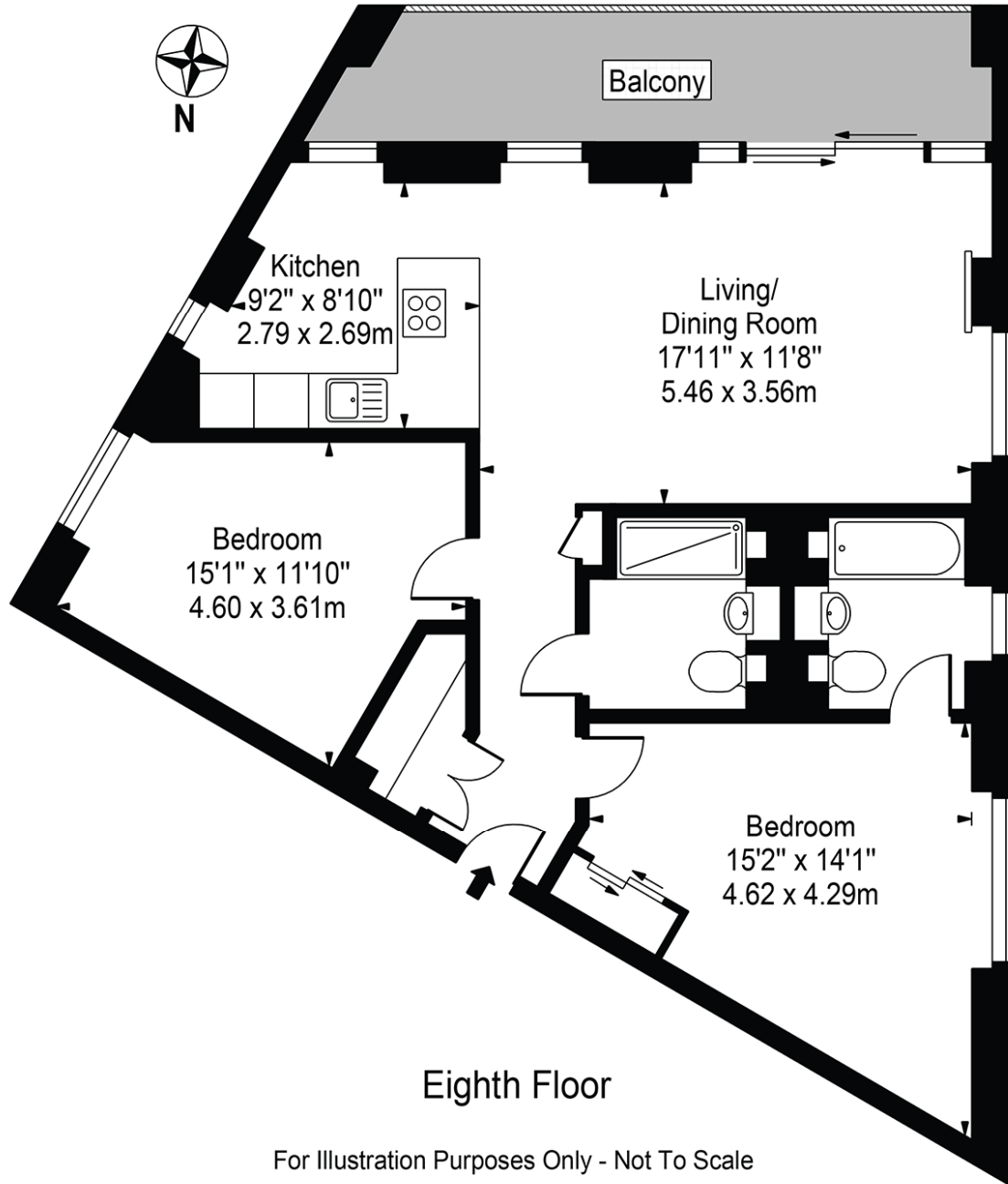
Chestertons Greenwich & Blackheath Lettings

234 Trafalgar Road
London
SE10 9ER
residential.management@chestertons.com
0207 298 5908
[chestertons.com](https://www.chestertons.com)

A member of
 **OnTheMarket.com**

Hampton Apartments

Approx. Gross Internal Area 807 Sq Ft - 74.98 Sq M



For Illustration Purposes Only - Not To Scale

This floor plan should be used as a general outline for guidance only and does not constitute in whole or in part an offer or contract. Any intending purchaser or lessee should satisfy themselves by inspection, searches, enquiries and full survey as to the correctness of each statement. Any areas, measurements or distances quoted are approximate and should not be used to value a property or be the basis of any sale or let.