



Riverside Mead, Peterborough
£425,000 **Freehold**

**Sharman
Quinney**

Key Features



- River setting
- Four double bedrooms
- Garage
- Off road parking
- Two reception rooms

The property is well presented throughout and boasts a generous and flexible ground floor layout. Upon entering, you are welcomed by a spacious hallway leading to multiple reception rooms, ideal for formal entertaining, family living and relaxation. A separate study provides an excellent space for home working or quiet reading, while the well-equipped kitchen is complemented by a separate utility room and a convenient ground floor WC, adding to the practicality of the home.

Upstairs, the accommodation continues to impress with four well proportioned bedrooms, including a spacious principal bedroom benefiting from its own en suite shower room. The remaining bedrooms are served by a modern family bathroom, making this an ideal layout for families or visiting guests.



Externally, the property benefits from solar panels on roof, a garage and additional off road parking with an EV charging point, while the riverside setting truly sets this home apart. The private mooring offers direct access to the water, perfect for boating enthusiasts or those simply looking to enjoy the tranquil surroundings and scenic views.

Riverside Mead is well positioned for local amenities, schools and transport links, offering easy access to Peterborough city centre while retaining a peaceful and sought after residential feel.

Early viewing is essential to fully appreciate the space, versatility and exceptional riverside lifestyle this wonderful home has to offer.

Lounge

Dining room

Study

Kitchen

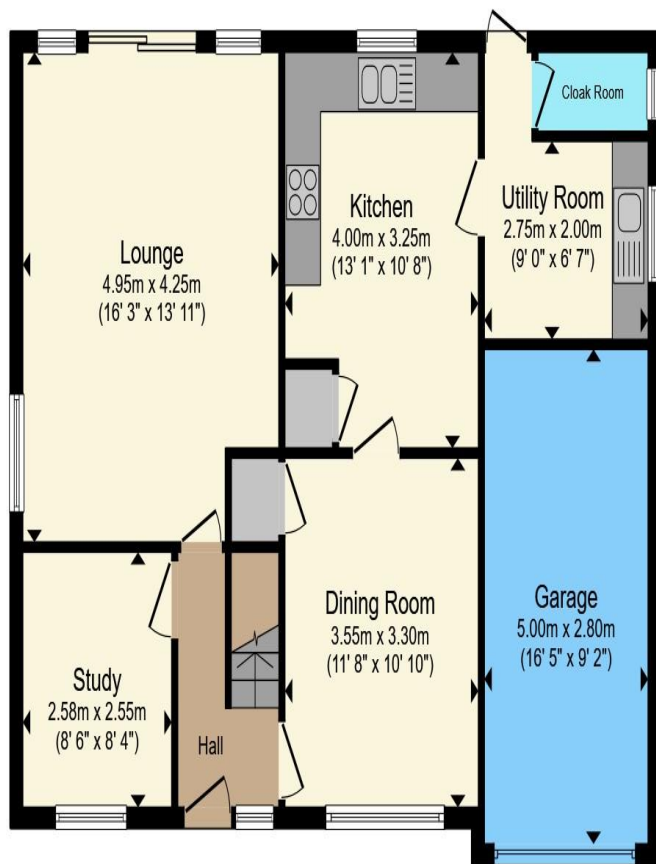
Bedroom 1

Bedroom 2

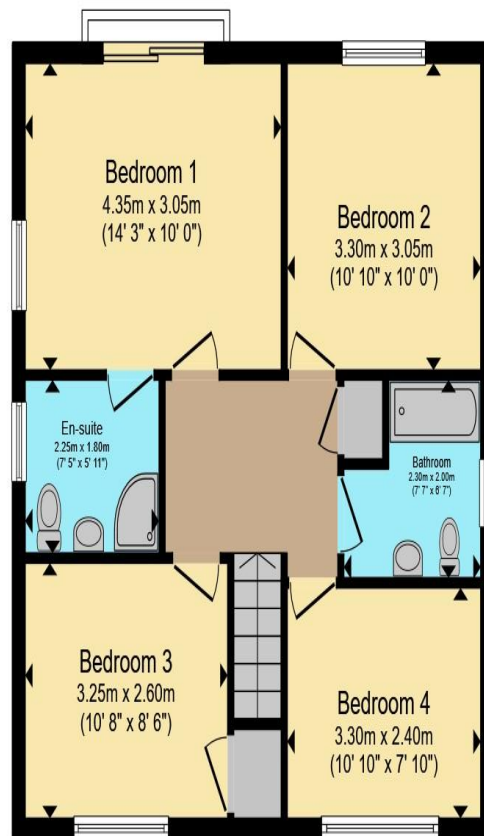
Bedroom 3

Bedroom 4





Ground Floor



First Floor

Total floor area 139.5 m² (1,502 sq.ft.) approx

This floor plan is for illustrative purposes only. It is not drawn to scale. Any measurements, floor areas (including any total floor area), openings and orientation are approximate. No details are guaranteed, they cannot be relied upon for any purpose and they do not form part of any agreement. No liability is taken for any error, omission or misstatement. A party must rely upon its own inspection(s). Powered by www.propertybox.io

**Sharman
Quinney**

To view this property call Sharman Quinney on:
01733 896222

Selling your property?

Contact us to arrange a **FREE** home valuation.

 01733 896222

 13 Desborough Avenue, Stanground,
PETERBOROUGH, Cambridgeshire, PE2 8RG

 stanground@sharmanquinney.co.uk

 www.sharmanquinney.co.uk



 SCAN ME



Sharman Quinney Holdings Limited is registered in England and Wales under company number 4174227, Registered Office is Cumbria House, 16-20 Hockliffe Street, Leighton Buzzard, Bedfordshire, LU7 1GN. VAT Registration Number is 500 2481 05.

1: These particulars do not constitute part or all of an offer or contract. 2: The measurements indicated are supplied for guidance only and as such must be considered incorrect. 3: Potential buyers are advised to recheck the measurements before committing to any expense. 4: Sharman Quinney has not tested any apparatus, equipment, fixtures, fittings or services and it is the buyers interests to check the working condition of any appliances. 5: Sharman Quinney has not sought to verify the legal title of the property and buyers must obtain verification from their legal representative. 6: Intending purchasers will be asked to produce identification documentation at a later stage and we would ask your co-operation in order that there will be no delay in agreeing the sale. Ref: SSQ205259 - 0004

