



2 Midvale Close

, Sheffield, S6 3HL

Asking Price £200,000



2 Midvale Close



Description

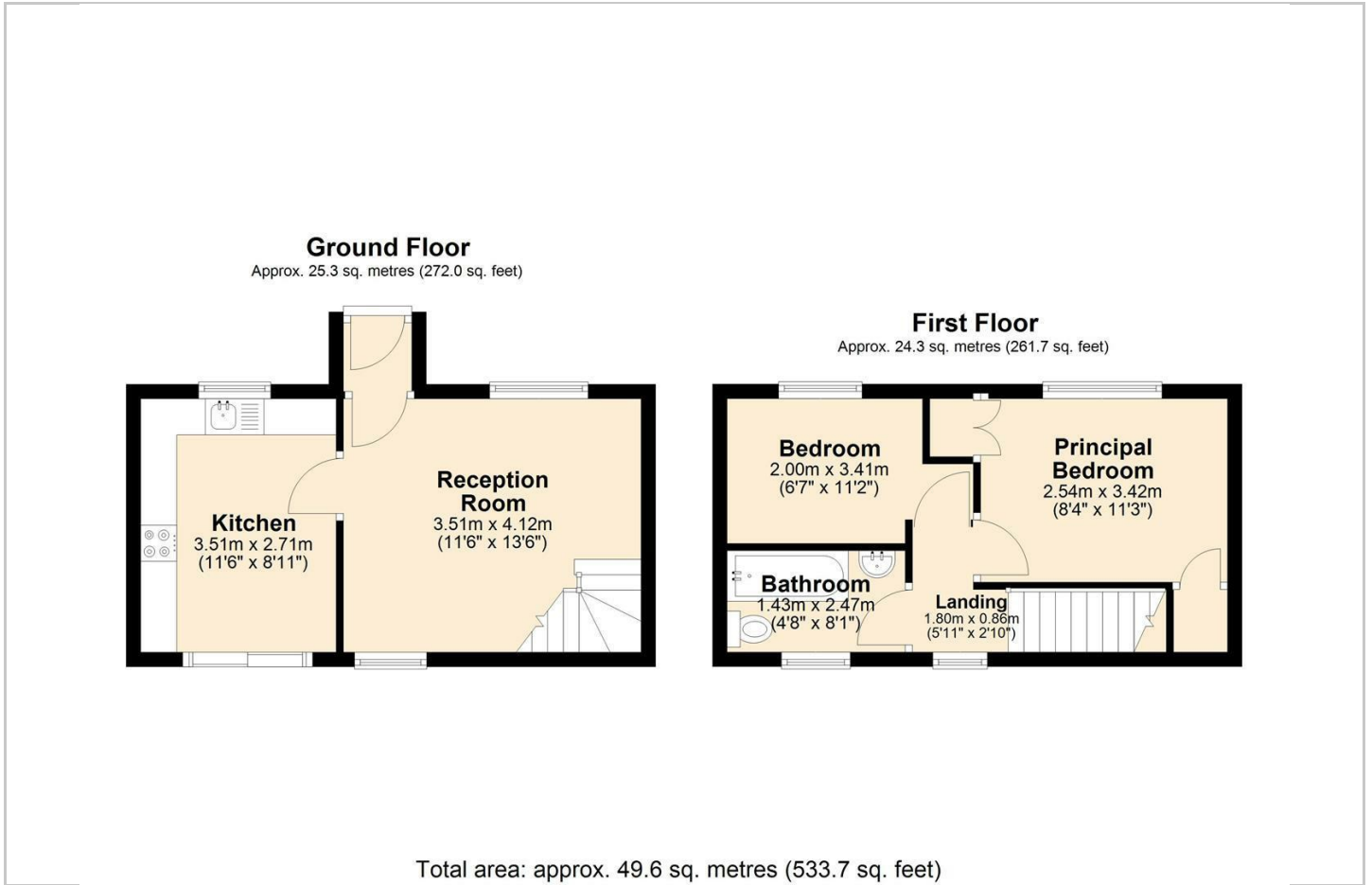
A modern semi detached property that enjoys a convenient location close to excellent local amenities and is situated only a short walk away from the vibrant and trendy area of Kelham Island. The property is located on a quiet cul de sac, on a generous plot that provides plenty of potential for extensions (subject to the necessary consents). It offers accommodation of above 533 square feet, over two floors and is available to buy with no onward chain.

- Two bedrooms, one with a built in wardrobe.
- Modern breakfast kitchen with patio doors to the garden and space for a small dining table.
- Large garden, with a west facing orientation, providing plenty of space for extensions.
- No onward chain.
- Large lounge.
- Off road parking for at least two cars and a large storage shed in the garden.
- Bathroom with white suite and a shower over the bath.
- Quiet cul de sac location, close to Kelham Island and excellent amenities on Infirmary Road.

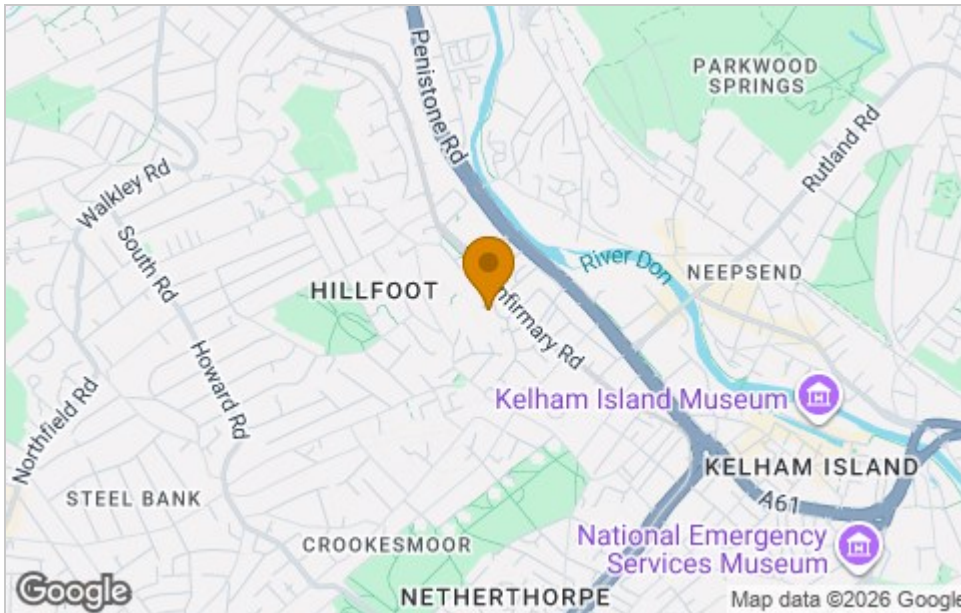




Floor Plan



Area Map



Viewing

Please contact our ELR Banner Cross Office on 0114 268 3388 if you wish to arrange a viewing appointment for this property or require further information.

These particulars, whilst believed to be accurate are set out as a general outline only for guidance and do not constitute any part of an offer or contract. Intending purchasers should not rely on them as statements of representation of fact, but must satisfy themselves by inspection or otherwise as to their accuracy. No person in this firm's employment has the authority to make or give any representation or warranty in respect of the property.

Eadon Lockwood and Riddle, 888 Ecclesall Road, Sheffield, South Yorkshire, S11 8TP
Tel: 0114 268 3388 Email: bannercross@elr.co.uk <https://www.elr.co.uk>

Energy Efficiency Graph

