

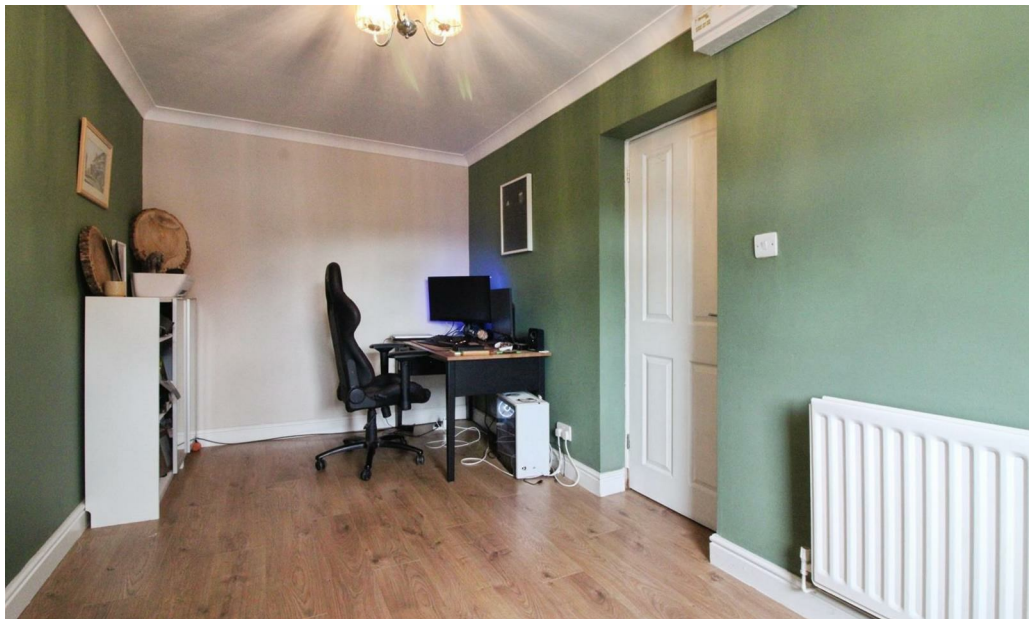


Heathfield Park

Darlington DL2 1LW

£190,000





This footer paragraph is an example only and should not be relied upon as complying with current legislation. These particulars, whilst believed to be accurate are set out as a general outline only for guidance and do not constitute any part of an offer or contract. Intending purchasers should not rely on them as statements of representation of fact, but must satisfy themselves by inspection or otherwise as to their accuracy. No person in this firm's employment has the authority to make or give any representation or warranty in respect of the property.



This footer paragraph is an example only and should not be relied upon as complying with current legislation. These particulars, whilst believed to be accurate are set out as a general outline only for guidance and do not constitute any part of an offer or contract. Intending purchasers should not rely on them as statements of representation of fact, but must satisfy themselves by inspection or otherwise as to their accuracy. No person in this firm's employment has the authority to make or give any representation or warranty in respect of the property.



Heathfield Park

Darlington DL2 1LW



- Three Bedroom Semi-Detached Property
- Gardens to Front & Rear
- Viewing Recommended

- Off Street Parking & Garage
- Conservatory & Garden Room
- Council Tax Band C

- Sought After Middleton St. George Location
- Open Green Spaces Nearby
- EPC Rating C

Occupying a pleasant position within a popular development and enjoying a private rear aspect, this beautifully presented and thoughtfully extended semi-detached home offers spacious and deceptively generous accommodation throughout.

The accommodation briefly comprises an entrance lobby, cloakroom/WC, a well-proportioned lounge, and a versatile sitting/dining room. A standout feature of the property is the impressive 22ft garden room, complete with UPVC double-glazed French doors opening onto the rear garden, creating an ideal space for relaxing or entertaining. The kitchen/breakfast room is fitted with an attractive range of modern wall and base units.

To the first floor are three well-sized bedrooms and a stylish refitted shower room/WC featuring a large walk-in shower cubicle.

Externally, the property benefits from lawned gardens to both the front and rear, with the rear garden also offering a substantial timber-decked patio area. A double-width driveway provides ample off-road parking.

Entrance Hall

Lounge

16'3 x 14'2 (4.95m x 4.32m)

Kitchen/Breakfast Room

14'2 x 8'4 (4.32m x 2.54m)

Study/Sitting Room

16'5 x 8'5 (5.00m x 2.57m)

Garden Room

22'5 x 8'5 (6.83m x 2.57m)

First Floor Landing

Bedroom One

14'2 x 8'5 (4.32m x 2.57m)

Bedroom Two

11'3 x 8'5 (3.43m x 2.57m)

Bedroom Three

10'0 x 6'4 (3.05m x 1.93m)

Bathroom

Externally

Tenure

Freehold

Property Details

Local Authority: Darlington
Council Tax Band: C
Annual Price: £2,217
Conservation Area No
Flood Risk Very low
Floor Area 1,001 ft² / 93 m²
Plot size 0.05 acres
Mobile coverage

EE

Vodafone

Three

O2

Broadband

Basic

17 Mbps

Ultrafast

1800 Mbps

Satellite / Fibre TV Availability

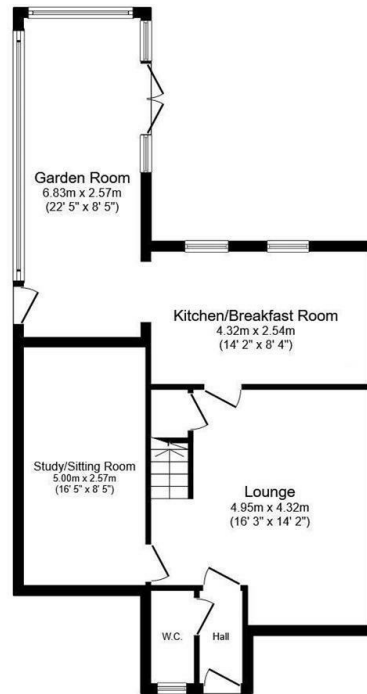
BT

Sky

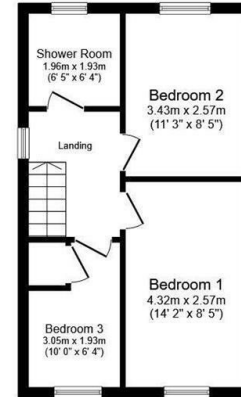
Virgin

Note

IMPORTANT NOTE TO PURCHASERS: We endeavour to make our sales particulars accurate and reliable, however, they do not constitute or form part of an offer or any contract and none is to be relied upon as statements of representation or fact. The services, systems and appliances listed in this specification have not been tested by us and no guarantee as to their operating ability or efficiency is given. All measurements have been taken as a guide to prospective buyers only, and are not precise. Floor plans where included are not to scale and accuracy is not guaranteed. If you require clarification or further information on any points, please contact us, especially if you are travelling some distance to view. Fixtures and fittings other than those mentioned are to be agreed with the seller. We cannot also confirm at this stage of marketing the tenure of this house



Ground Floor



First Floor

This floor plan is for illustrative purposes only. It is not drawn to scale. Any measurements, floor areas (including any total floor area), openings and orientations are approximate. No details are guaranteed, they cannot be relied upon for any purpose and do not form any part of any agreement. No liability is taken for any error, omission or misstatement. A party must rely upon its own inspection(s). Powered by www.Propertybox.io



Property Information

01325 363858

45 Duke Street, Darlington, County Durham, DL3 7SD
sales@venturepropertiesuk.com