



Hawker Drive, Addlestone, KT15 2FP





Situated within a highly desirable development on the borders of Addlestone & Weybridge, this superbly presented four double bedroom semi-detached home offers spacious and versatile accommodation, ideally located less than a mile from Weybridge town centre.

Designed with modern family living in mind, the ground floor features a stylish front-aspect kitchen/dining room complete with integrated appliances—perfect for both everyday living and entertaining. To the rear, a bright and generously sized living room opens directly onto the garden through double doors, creating a seamless indoor-outdoor flow. A convenient downstairs WC and utility cupboard complete the ground floor.

The first floor offers three well-proportioned double bedrooms, including a spacious guest bedroom with fitted wardrobes and a contemporary en-suite. A modern family bathroom serves the remaining bedrooms, all accessed from a central landing.

Occupying the entire top floor, the impressive main bedroom suite provides a private retreat, featuring extensive fitted storage and a sleek en-suite shower room.

Externally, the property benefits from a private rear garden with both patio and lawn areas—ideal for relaxing or entertaining—along with a garden shed and useful side access. To the side, a driveway provides off-street parking for at least two vehicles.

Perfectly positioned within walking distance of Addlestone town centre and train station, and just a mile from Weybridge, this fantastic home combines peaceful surroundings with excellent convenience.

Freehold





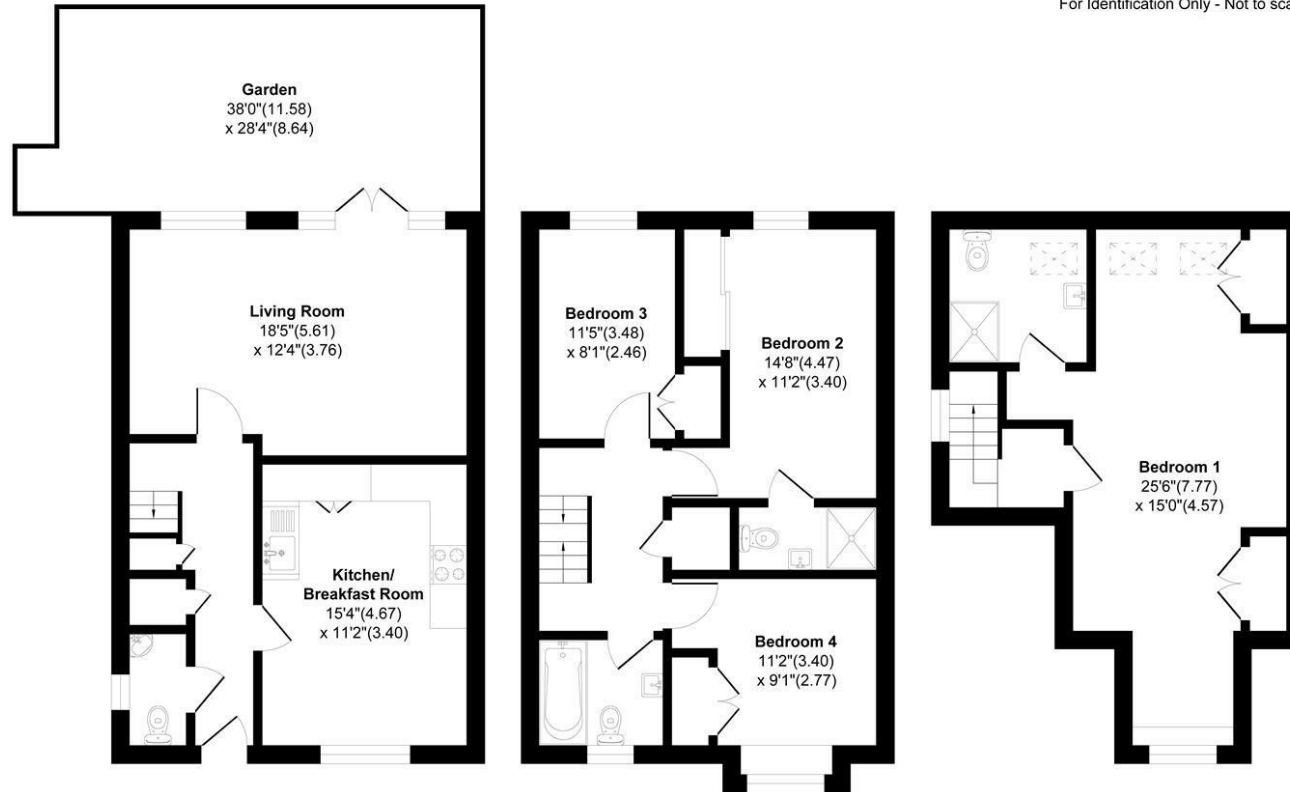
EPC: B86



## Hawker Drive, Addlestone, KT15

Approximate Area = 1438 sq ft / 133.5 sq m

For Identification Only - Not to scale



Ground Floor

First Floor

Second Floor

Floor plan Produced in accordance with RICS Property Measurement 2nd Edition, Incorporating International Property Measurement Standards (IPMS2 Residential). Produced for Grants Homes Agents.

