



2 Bed
House - Terraced
located on Caludon
Road, Coventry

£925 Per Calendar Month



 UP Estates



2



1



1



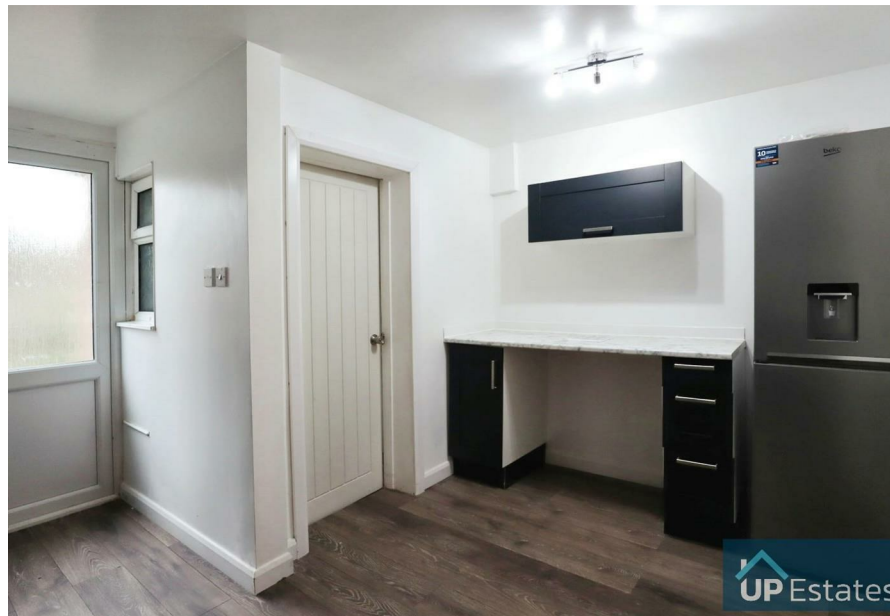
E

Property Address:
Caludon Road,
Coventry,
CV2 4LR

PROPERTY SUMMARY

****AVAILABLE DECEMBER - OPEN-PLAN TERRACED
PROPERTY - COUNCIL TAX BAND A - SPACIOUS GARDEN
- LINKS TO AMENITIES****

Up Estates presents this opportunity to obtain this open-plan terraced property located on Caludon Road in Coventry. This property is a short distance away from many major roads that flow throughout the city and beyond. The area is not shy of amenities and has close links to many of them. It briefly comprises of; entrance porch, living room, dining area, kitchen, bathroom, two bedrooms and a long rear garden. This property benefits from a modern downstairs interior with plenty of storage space and cooking facilities. The property is unfurnished.



CONTACT

Up Estates
6 Orchard Court
Binley Business Park
Coventry
Warwickshire
CV3 2TQ

E: lettings@upestates.co.uk
T: 024 7771 0780
www.upestates.co.uk