

Hazelwood Road, Callington, PL17

Guide Price £190,000

2 1 1



A fantastic opportunity to purchase a two-bedroom semi-detached home, benefiting from off-street parking and a south-facing garden. The property also has the added advantage of building control approval for a loft conversion, offering the potential to create a further double bedroom with an ensuite shower room.

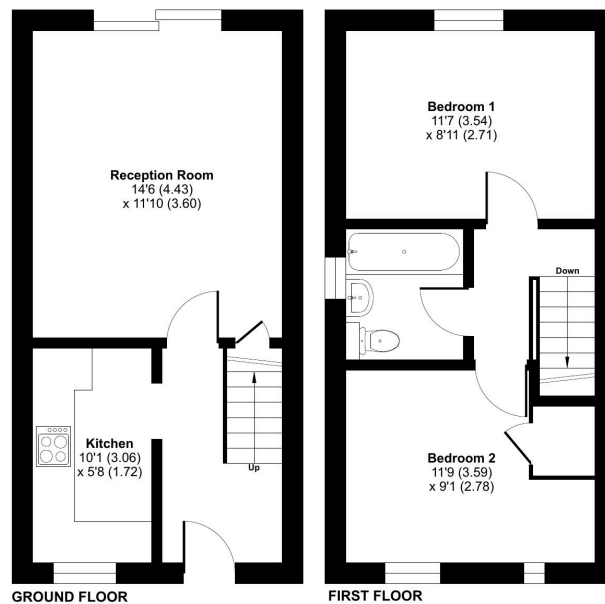
Callington is a charming Cornish town located within a prime location in South East Cornwall and just 15 miles from Plymouth City Centre.

Key Features

- TO ARRANGE A VIEWING PLEASE QUOTE BL0650
- Two Double Bedrooms
- South-Facing Garden
- Ideal First Time Buy Or Investment Purchase
- Family Bathroom
- Semi-Detached
- Off-Road Parking
- Popular Residential Area
- Reception Room
- Freehold

Hazelwood Road, Callington, PL17

Approximate Area = 594 sq ft / 55.1 sq m
For identification only - Not to scale



Floor plan produced in accordance with RICS Property Measurement Standards incorporating International Property Measurement Standards (IPMS2 Residential). © nichecom 2026. Produced for eXp Agent (D). REF: 144966