



32 Harold Road, Portsmouth, PO4 0LS
£1,350 PCM Council Tax Band B Deposit £1,557

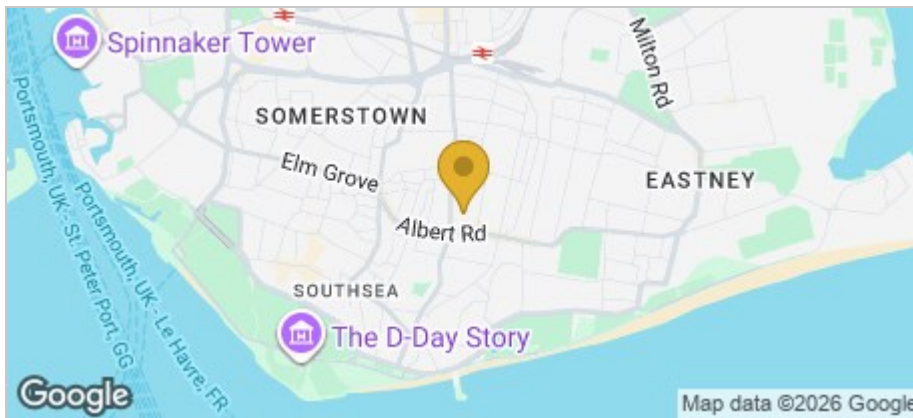


Tully's

Floor Plan



Area Map



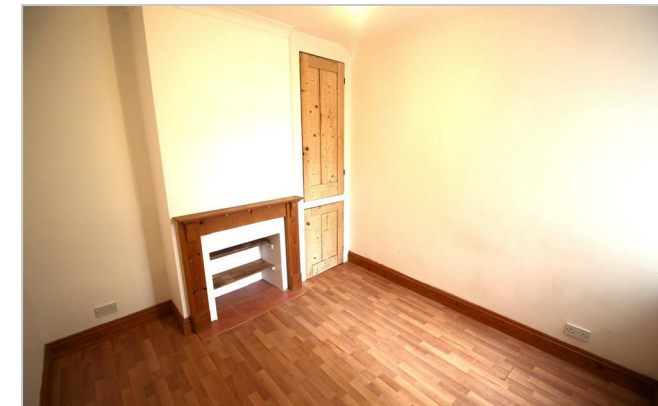
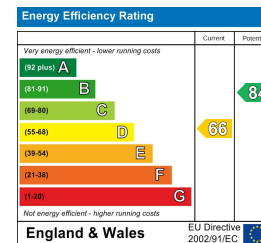
Accommodation

- Holding Deposit - £311.00
- Deposit - £1557.00
- Available May 20026
- Council Tax Band - B
- 3 Bedrooms
- 2 Reception Rooms
- Double Glazing
- Gas Central Heating

Viewing

Please contact our Southsea Office on 023 9273 2241 if you wish to arrange a viewing appointment for this property or require further information.

Energy Efficiency Graph



157-159 Albert Road, Southsea, Portsmouth, Hampshire, PO4 0JW
 023 9273 2241 Email: tully@tullyand.co lettings@tullyand.co

Tully's