



PRIVATE LANE
FREE
FOR SALE
CONTACT SALES
020 8850 1000

barnard marcus

Tala Close, Surbiton, KT6 7EY



welcome to

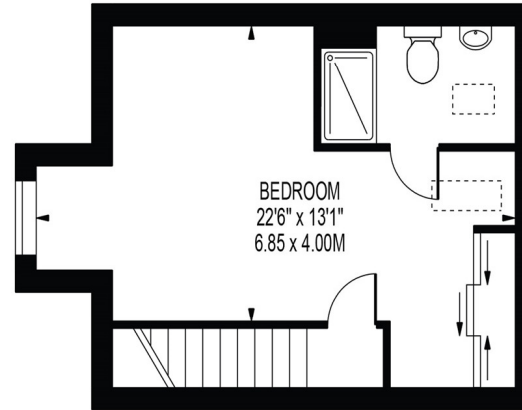
Tala Close, Surbiton

Hidden within a tranquil close, this four bedroom semi-detached home lies just 0.6 miles from Tolworth Rail Station & walking distance of 0.1 miles from Tolworth Girls School making it a must see for those with young families.

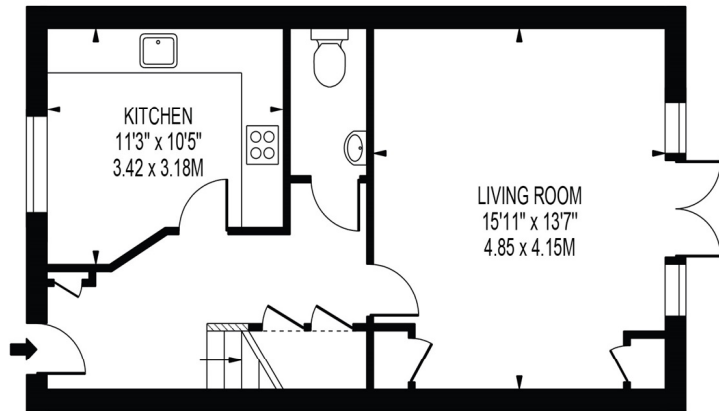


TALA CLOSE

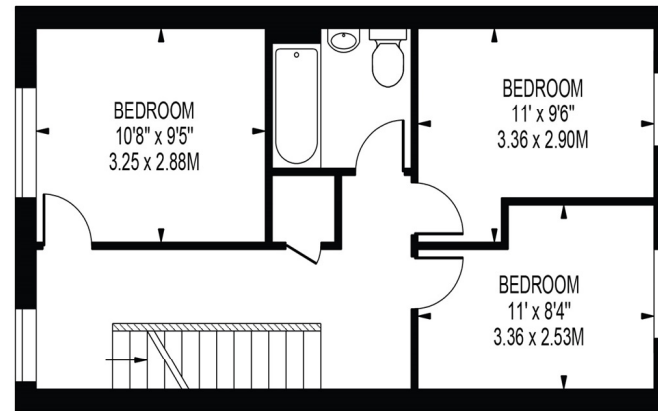
APPROXIMATE GROSS INTERNAL FLOOR AREA: 1261 SQ FT - 117.18 SQ M



SECOND FLOOR



GROUND FLOOR



FIRST FLOOR

FOR ILLUSTRATION PURPOSES ONLY

THIS FLOOR PLAN SHOULD BE USED AS A GENERAL OUTLINE FOR GUIDANCE ONLY AND DOES NOT CONSTITUTE IN WHOLE OR IN PART AN OFFER OR CONTRACT. ANY INTENDING PURCHASER OR LESSEE SHOULD SATISFY THEMSELVES BY INSPECTION, SEARCHES, ENQUIRIES AND FULL SURVEY AS TO THE CORRECTNESS OF EACH STATEMENT. ANY AREAS, MEASUREMENTS OR DISTANCES QUOTED ARE APPROXIMATE AND SHOULD NOT BE USED TO VALUE A PROPERTY OR BE THE BASIS OF ANY SALE OR LET.

Hidden within a tranquil close, this four bedroom semi-detached home lies just 0.6 miles from Tolworth Rail Station & walking distance of 0.1 miles from Tolworth Girls School making it a must see for those with young families.

The welcoming hallway entrance flows elegantly in to the vast living/dining area which offers a stylish finish with an ample amount of built in storage. This space also grants direct access to the luscious rear garden. The ground floor is complete by a sizable kitchen as well as a cloakroom/WC.

The first floor consists of three spacious double bedrooms as well as a contemporary three piece family bathroom. The top floor this wonderful home comprises of a substantially sized master bedroom which offers a dual aspect & benefits from a modern en-suite three piece bathroom.

With the additional benefit of large drive way, this home is expected to be very popular so immediate inspection is recommended to avoid disappointment.

welcome to

Tala Close, Surbiton

- Four Bedrooms
- Two Bathrooms
- Semi-Detached
- Drive Way
- Walking Distance To Tolworth Girl School

Tenure: Freehold EPC Rating: B
Council Tax Band: F

£625,000



Please note the marker reflects the
postcode not the actual property

view this property online barnardmarcus.co.uk/Property/SUR109156



Property Ref:
SUR109156 - 0006

1. MONEY LAUNDERING REGULATIONS Intending purchasers will be asked to produce identification documentation at a later stage and we would ask for your co-operation in order that there is no delay in agreeing the sale. 2. These particulars do not constitute part or all of an offer or contract. 3. The measurements indicated are supplied for guidance only and as such must be considered incorrect. Potential buyers are advised to recheck measurements before committing to any expense. 4. We have not tested any apparatus, equipment, fixtures or services and it is in the buyers interest to check the working condition of any appliances. 5. Where an EPC, or a Home Report (Scotland only) is held for this property, it is available for inspection at the branch by appointment. If you require a printed version of a Home Report, you will need to pay a reasonable production charge reflecting printing and other costs. 6. We are not able to offer an opinion either written or verbal on the content of these reports and this must be obtained from your legal representative. 7. Whilst we take care in preparing these reports, a buyer should ensure that his/her legal representative confirms as soon as possible all matters relating to title including the extent and boundaries of the property and other important matters before exchange of contracts.

Barnard Marcus is a trading name of Sequence (UK) Limited which is registered in England and Wales under company number 4268443, Registered Office is Cumbria House, 16-20 Hockliffe Street, Leighton Buzzard, Bedfordshire, LU7 1GN. VAT Registration Number is 500 2481 05.



barnard marcus



020 8390 8181



Surbiton@barnardmarcus.co.uk



5A Surbiton Parade St. Marks Hill, SURBITON,
Surrey, KT6 4RB



barnardmarcus.co.uk