



Shakespeare Road, Gillingham ME7 5QJ

£1,275 Per Calendar Month

CR Real Estate are pleased to offer this spacious and recently refurbished property located on Shakespeare Road, Gillingham, just a short distance from Medway Hospital.

The property has been finished to a modern standard throughout, offering bright and well-proportioned rooms ideal for families or professionals. Internally, the accommodation provides generous living space with neutral décor, a modern fitted kitchen, and a well presented bathroom.

Upstairs, you will find three good sized bedrooms, with the third bedroom accessed via the second.

Externally, the property benefits from a low maintenance rear garden, perfect for outdoor use.

Situated in a convenient location close to Medway Hospital, local amenities and transport links, this property is ideal for those needing easy access to the town centre and surrounding areas.

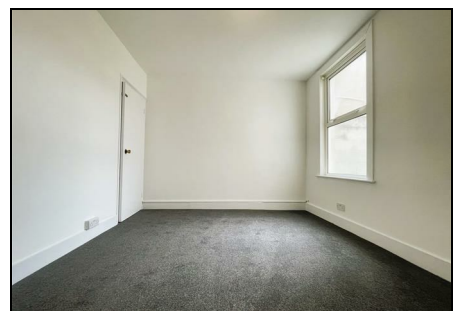
Available now, please call to arrange your viewing.

CR Real Estate are part The Ombudsman Redress Scheme and are a member of the Propertymark Client Money Protection Scheme. Tenant deposits are protected by the Tenancy Deposit Scheme. For more information, please contact us.

Client Money Protection is provided by: Client Money Protect. Scheme Ref: CMP004209

Independent redress is provided by: The Property Ombudsman (TPO). Membership Number: E01687

- Three bedroom house to rent
- Available now
- Spacious living accommodation
- Low maintenance rear garden
- Modern throughout
- Convenient for town centre and transport links



Energy Efficiency Rating		Environmental Impact (CO ₂) Rating	
Very energy efficient - lower running costs	Control	Very environmentally friendly - lower CO ₂ emissions	Control
(92 plus) A		(91 plus) A	
(81-91) B		(81-91) B	
(69-80) C		(69-80) C	
(55-68) D		(55-68) D	
(49-54) E	50	(49-54) E	44
(39-48) F	51	(39-48) F	44
(31-38) G		(31-38) G	
Not energy efficient - higher running costs		Not environmentally friendly - higher CO ₂ emissions	
England & Wales	EU Directive 2002/91/EC	England & Wales	EU Directive 2002/91/EC