



Edinburgh Avenue, Peterborough
£290,000 Freehold

**Sharman
Quinney**

Key Features



- Three Bedrooms
- Kitchen/Diner
- Shower Room and Bathroom
- Off Road Parking
- Large Garden

GROUND FLOOR

ENTRANCE PORCH: Patio door. Further UPVC Double glazed entrance door to;

ENTRANCE HALL: Radiator. Built in under stairs cupboard. Stairs to first floor.

LOUNGE/DINER: UPVC Double glazed window to front and patio doors to rear. Two radiators.

KITCHEN/DINER: UPVC Double glazed window to side. Fitted with a range of base and wall units. Stainless steel sink and drainer with mixer tap. Built in oven. Fitted hob. Radiator.

UTILITY: UPVC Double glazed window to rear and door to side. Space and plumbing for washing



machine.

SHOWER ROOM: UPVC Frosted double glazed window to rear. Low level WC. Wash hand basin with mixer tap. Walk in shower with wall mounted shower unit.

FIRST FLOOR

LANDING: Loft access. Built in cupboard.

BEDROOM: UPVC Double glazed window to rear. Radiator.

BEDROOM: UPVC Double glazed window to front. Radiator.

BEDROOM: UPVC Double glazed window to front. Radiator.

BATHROOM: UPVC Frosted double glazed window to rear. Low level WC. Wash hand basin with mixer tap. Bath with mixer tap and shower over. Heated towel rail.

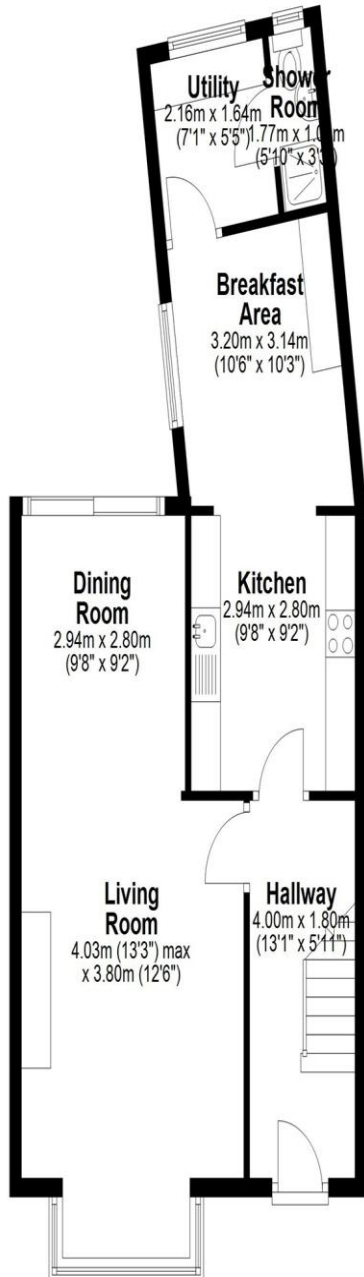
OUTSIDE

FRONT: Driveway providing off road parking. Gates to rear.

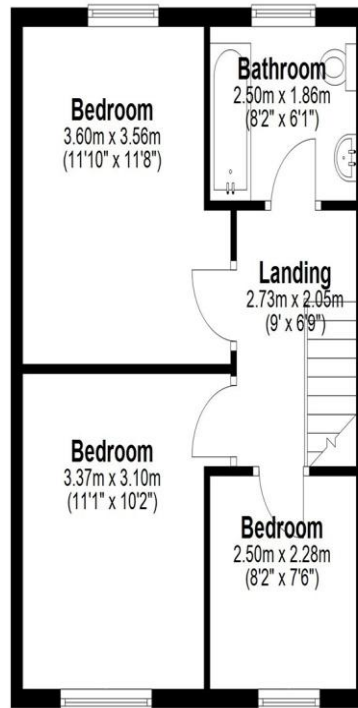
REAR GARDEN: Large garden enclosed by fencing. Paved area. Garden shed. Double wooden garage.



Ground Floor



First Floor



Total area: approx. 95.5 sq. metres (1027.5 sq. feet)

All measurements are approximate and area calculations are gross internal
Plan produced using PlanUp.

To view this property call Sharman Quinney on:
01733 575757

Selling your property?

Contact us to arrange a **FREE** home valuation.

 01733 575757

 Loxley Centre, Werrington, Peterborough, Cambridgeshire, PE4 5BW

 werrington@sharmanquinney.co.uk

 www.sharmanquinney.co.uk



 SCAN ME



Sharman Quinney Holdings Limited is registered in England and Wales under company number 4174227, Registered Office is Cumbria House, 16-20 Hockliffe Street, Leighton Buzzard, Bedfordshire, LU7 1GN. VAT Registration Number is 500 2481 05.

1: These particulars do not constitute part or all of an offer or contract. 2: The measurements indicated are supplied for guidance only and as such must be considered incorrect. 3: Potential buyers are advised to recheck the measurements before committing to any expense. 4: Sharman Quinney has not tested any apparatus, equipment, fixtures, fittings or services and it is the buyers interests to check the working condition of any appliances. 5: Sharman Quinney has not sought to verify the legal title of the property and buyers must obtain verification from their legal representative. 6: Intending purchasers will be asked to produce identification documentation at a later stage and we would ask your co-operation in order that there will be no delay in agreeing the sale. Ref: WER205835 - 0002

