



Victoria Bolt
estate agents POWERED BY **exp** UK

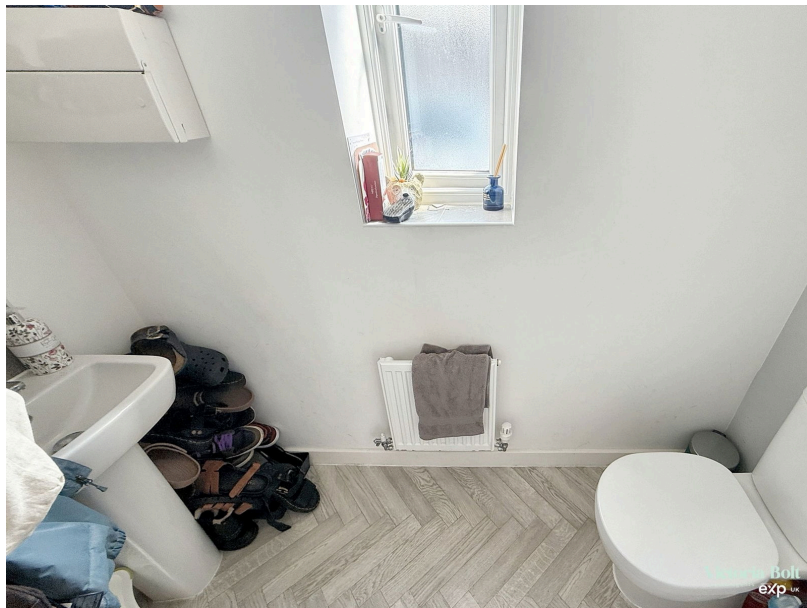
Afflington Road, Plymstock

Guide Price £260,000

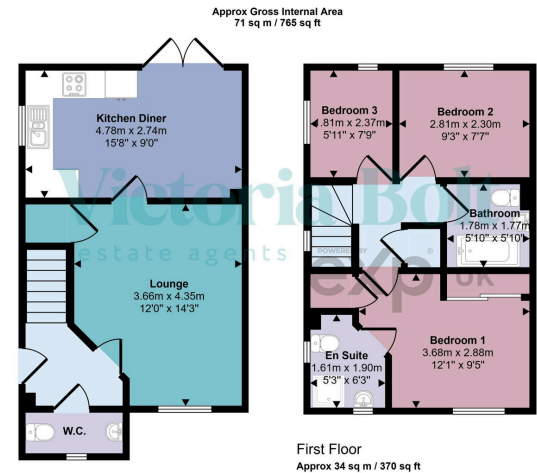
3 3 1



- Three-bedroom semi-detached home in a modern development
- Stylish kitchen/diner with modern fittings with access to the garden
- Downstairs W.C. and family bathroom
- Two allocated parking spaces at the front
- Short walk to local primary school
- Principal bedroom with en suite
- Spacious lounge
- Low maintenance garden with patio and artificial grass
- EV charging point
- Move-in-ready condition with contemporary décor throughout



Modern 3-bedroom semi-detached home in a popular Plymouth development, featuring a stylish kitchen/diner, spacious lounge, en suite to the main bedroom, low-maintenance garden, two parking spaces with EV charger, and just a short walk from a local primary school.



Ground Floor
Approx 37 sq m / 395 sq ft

This floorplan is only for illustrative purposes and is not to scale. Measurements of rooms, doors, windows, and any items are approximate and no responsibility is taken for any error, omission or mis-statement. Icons of items such as bathroom suites are representations only and may not look like the real items. Made with Made Snappy 360.

Score	Energy rating	Current	Potential
92+	A		95 A
81-91	B	82 B	
69-80	C		
55-68	D		
39-54	E		
21-38	F		
1-20	G		

Energy efficiency chart