



## DENMARK AVENUE, SW19

£550,000

Top floor  
Bright and airy  
Long lease  
Excellent condition  
Sought after road  
Energy rating: c

@marshandparsons  
marshandparsons.co.uk

MARSH &  
PARSONS

# ABOUT THE PROPERTY

This lovely, bright and airy two bedroom flat occupies the top floor of a large, late-Victorian, 4-storey townhouse. It is neutrally decorated and well-presented throughout and is enviably located between Wimbledon Common and Wimbledon town centre.

Denmark Avenue is a popular residential street and offers a convenient location with easy access to Wimbledon Village and Town Centre. Wimbledon station provides frequent rail, Underground and Tramlink services to central London, London Waterloo and Victoria





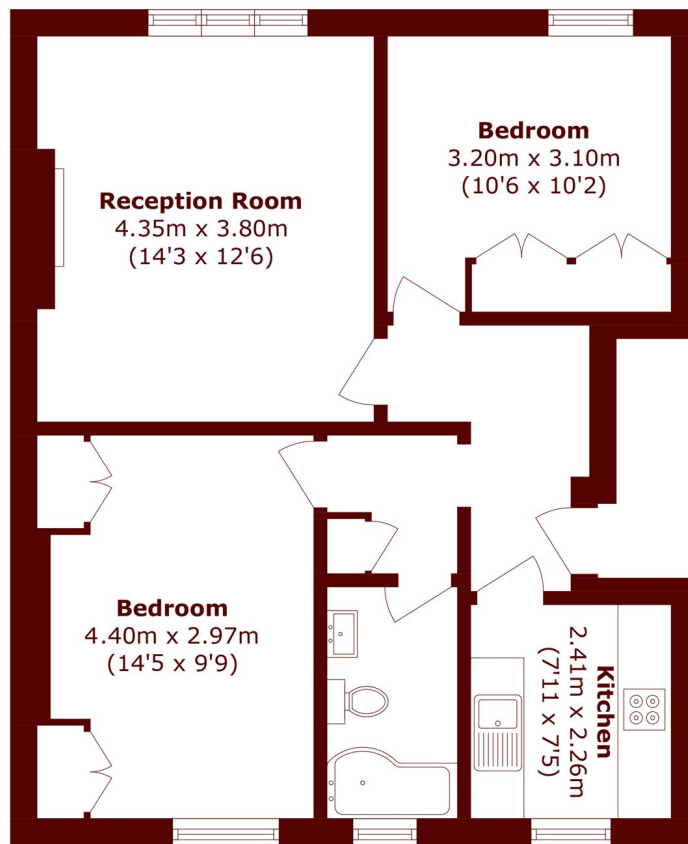


# FURTHER DETAILS

Accommodation features excellent living/entertaining space including a 14' reception with feature fireplace and large windows to the front. There is a well-equipped, separate kitchen, two good-size bedrooms both with fitted wardrobes and a bathroom/WC with over-bath shower and WC.



# STEP INSIDE DENMARK AVENUE



Total area (approx.): 59.8 sq. m (643.7 sq. ft)

Wimbledon  
020 8879 6660

Energy Rating: D We aim to make our particulars both accurate and reliable. However, they are not guaranteed; nor do they form part of an offer or contract. If you require clarification on any points then please contact us, especially if you're traveling some distance to view. Please note that appliances and heating systems have not been tested and therefore no warranties can be given as to their good working order

MARSH &  
PARSONS