



## Harston Walk, E3

£305,000

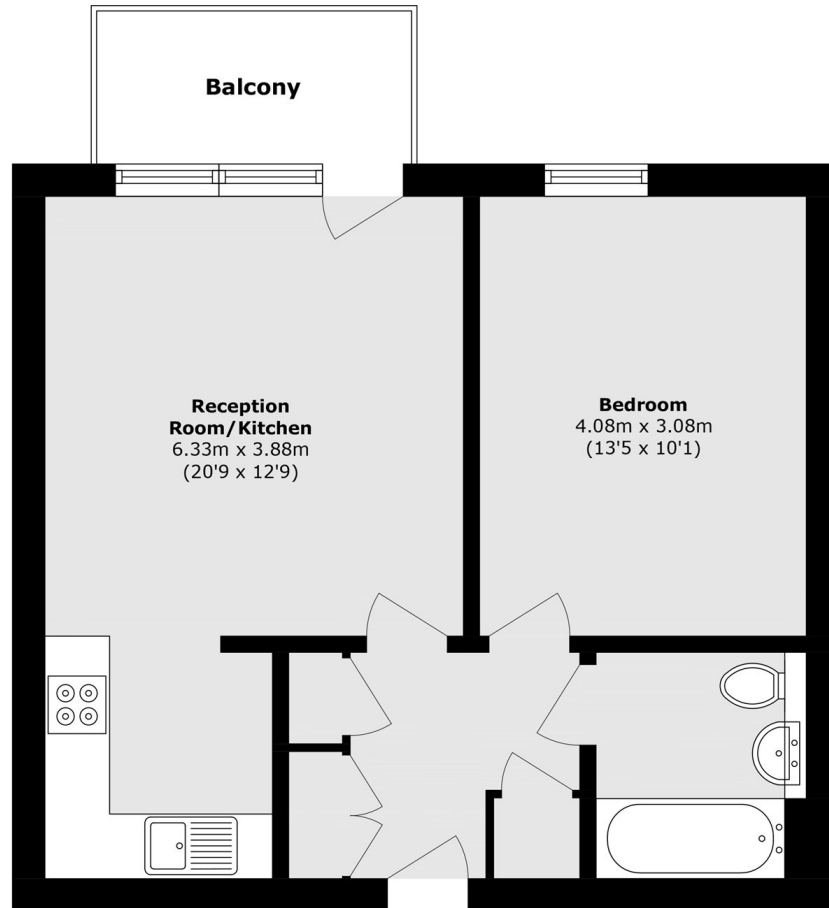
A modern, bright and spacious one double bedroom apartment in Bromley by Bow including great on site facilities such as a concierge and gym. This property offers South West facing views, Open Plan living and dining space, and a private balcony.

The development has on-site shops including a pharmacy and Sainsburys store. There are great transport options with the DLR and Tube giving access to the City or Canary Wharf.

### Features

- Canary Wharf Views
- Private Balcony
- Local Amenities
- Well Connected Transport Links
- Concierge & Gym
- South West Facing Views

# Harston Walk, London, E3



Total area (approx.): 44.6 sq. m (480.0 sq. ft)  
Balcony area (approx.): 4.1 sq. m (44.1 sq. ft)