



## Barkham Terrace, SE1

£475,000

A rarely available apartment set within an elegant early Victorian conversion, enviably positioned, immediately opposite the Imperial War Museum. The property has been recently redecorated. It features a private patio garden, external storage to the rear, a spacious front reception room, a separate kitchen, a generous double bedroom, and a three-piece bathroom. Offers in excess of £500,000.

Barkham Terrace is superbly located, moments from Lambeth North and Waterloo stations, offering excellent transport links across London. Residents are also perfectly placed for the vibrant amenities of the South Bank, as well as the popular cafés, restaurants, and

### Features

- Offers in excess of £500,000
- Early Victorian Conversion
- Own Front Door
- Private Patio Garden
- Very Central Location
- Chain Free Sale



## Barkham Terrace, SE1

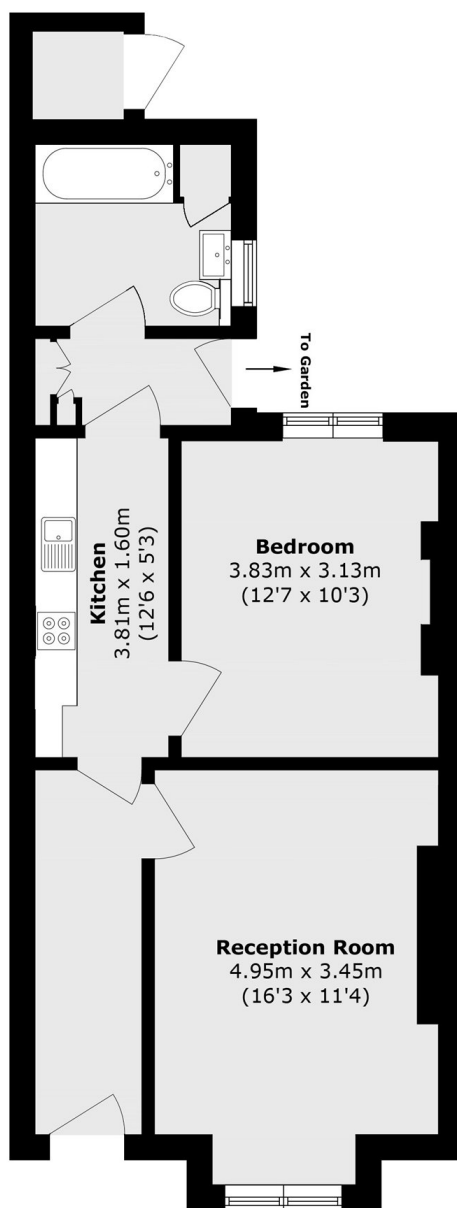
The property provides well-proportioned accommodation, including a bright and spacious front reception room, a separate fully fitted kitchen, a generous double bedroom, and a stylish three-piece bathroom suite.

To the rear, the apartment benefits from a private patio garden, an increasingly rare feature in this central location, providing an ideal outdoor space for relaxing or entertaining. To the front is further outside space with an additional external storage cupboard.

Situated in a highly desirable setting, the property combines period character and an iconic location, with the convenience of being moments from local amenities, green spaces, and excellent transport links.



# Barkham Terrace, London, SE1



Total area (approx.): 49.6 sq. m (533.8 sq. ft)  
External area (approx.) 1.1 sq. m 11.8 sq.ft)