



**Price**

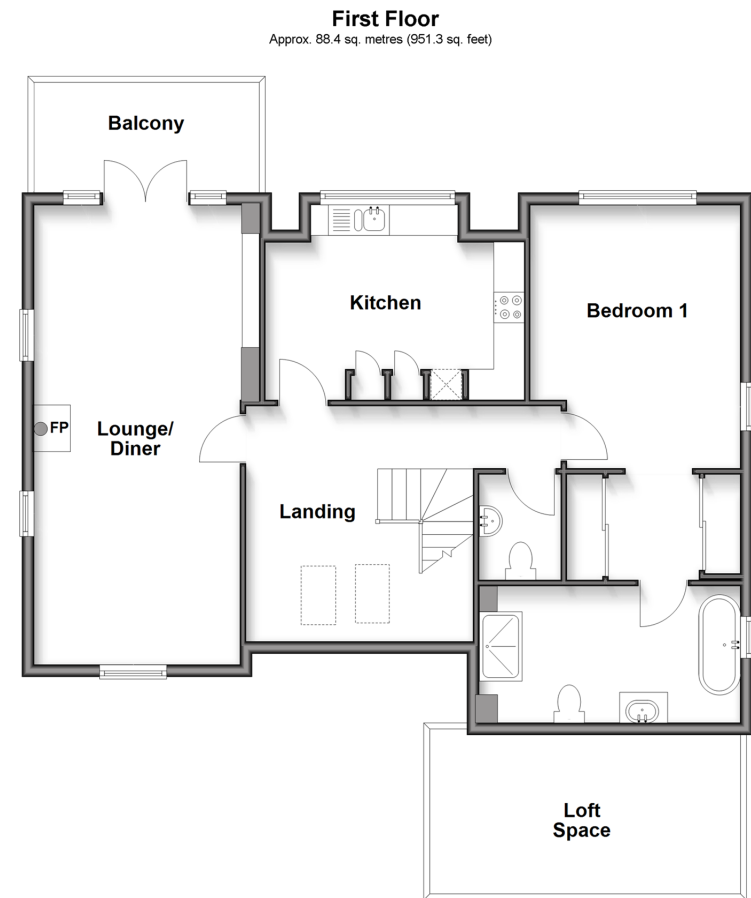
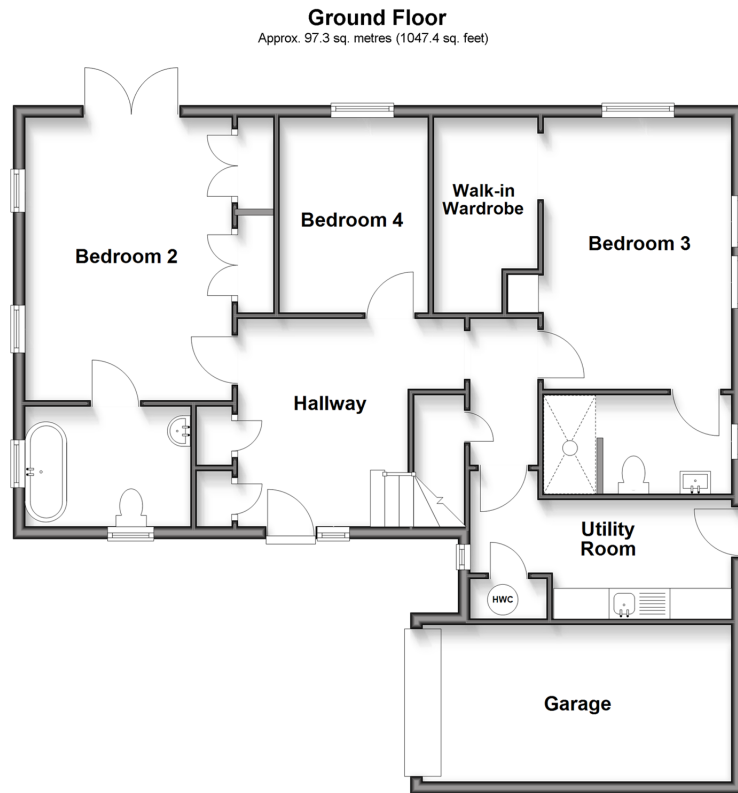
**£600,000**

**Freehold**

4x  3x  1x 

**High Street, Wouldham,  
Rochester, Kent, ME1**

*Wards*  
Helping you move forwards



## Accommodation

### GROUND FLOOR

Hallway  
 Bedroom 2: 15'6 x 11'7 (4.73m x 3.53m)  
 En-Suite Bathroom: 8'8 x 6'5 (2.64m x 1.96m)  
 Bedroom 4: 10'5 x 7'9 (3.18m x 2.36m)  
 Bedroom 3: 14'2 x 10'1 (4.32m x 3.08m)  
 En-Suite Shower Room: 10'6 x 5'8 (3.20m x 1.73m)  
 Walk-in Wardrobe: 7'7 x 5'5 (2.31m x 1.65m)  
 Utility Room: 14'0 x 6'4 (4.27m x 1.93m)

### FIRST FLOOR

Landing  
 Cloakroom  
 Lounge/Diner: 24'6 x 11'4 (7.47m x 3.46m)  
 Balcony  
 Kitchen: 14'1 x 10'7 (4.30m x 3.23m)  
 Bedroom 1: 14'2 x 11'7 (4.32m x 3.53m)  
 En-Suite Bathroom: 12'9 x 6'4 (3.89m x 1.93m)

### OUTSIDE

Front and Rear Garden  
 Garage and Off-Road Parking



## Main features

- Unique timber built home situated in a sought after picturesque village location
- Immaculately presented throughout
- Garage and off-road parking
- Surrounded by countryside with stunning sunsets and river views
- Sold with no forward chain



### Nearest Schools

Primary Schools: Wouldham, All Saints C of E Voluntary Controlled Primary 0.1 miles

Secondary Schools: Fort Pitt Grammar School 4.0 miles



### Transport Information

Train Stations: Rochester 3.9 miles, Strood 4.0 miles, Aylesford 5.1 miles



### Address

High Street, Wouldham, Rochester, Kent, ME1



### Directions

For directions to this property please contact us.



*Wards*  
Helping you move forwards

Call Rochester Branch 01634 830925 ■ [wardsofkent.co.uk](http://wardsofkent.co.uk)



■ Legal advice should be taken to verify fixtures/fittings, planning, alterations and/or lease details ■ Appliances & services are untested, dimensions are approximate and floor plans are not to scale



11530103/20260304/DG/AB