



2 Bedrooms | 1 Bathrooms | 1 Reception Rooms

£1,800 Per month

LOFT

Russell Hill |
 Purley | CR8 2JA
 £1,800 Per month

- Modern finish throughout with direct access to communal gardens
- Two spacious double bedrooms
- Flooded with natural light
- Expansive reception room ideal for relaxing and entertaining

- Excellent transport links and local amenities nearby
- Local on a quiet residential road

• Available immediately!

Hallway

Reception room
 19'4 x 13'5 (5.89m x 4.09m)

Kitchen
 14'9 x 6'5 (4.50m x 1.96m)

Bathroom

Bedroom 1
 13'4 x 11'5 (4.06m x 3.48m)

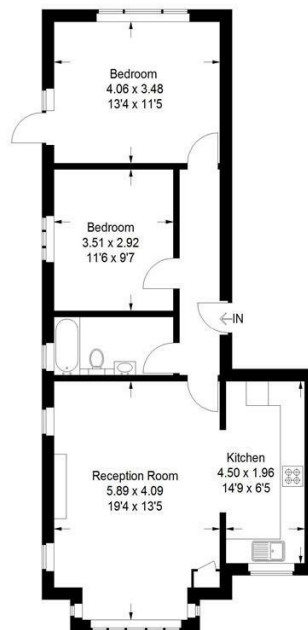
Bedroom 2
 11'6 x 9'7 (3.51m x 2.92m)

Communal Garden



Russell Hill, CR8

Approximate Gross Internal Area
 69.3 sq m / 746 sq ft



Ground Floor

This plan is for layout guidance only. Not drawn to scale unless stated. Windows and door openings are approximate. Whilst every care is taken in the preparation of this plan, please check all dimensions, shapes and compass bearings before making any decisions reliant upon them. (ID1304165)



EPC Rating: D

hello@loft-estates.co.uk
 020 8660 8070