

for sale

**£130,000** Leasehold



## Portershill Drive Shirley Solihull B90 4DS

A Modern Bungalow Situated in this Pleasant Development Close to the Stratford Road Built for the Over 60'S. Lounge/Kitchen and Bathroom , Large Bedroom plus Front and Rear communal gardens. Excellent location and Transport links to Birmingham and Solihull.

- Energy Rating: E
- RETIREMENT HOME
- LOUNGE DINER
- REFITTED KITCHEN
- ONE BEDROOM

# Property Details

## Entrance Porch

- Double Glazed Door
- Electric Heater
- Access to Loft

## Lounge 16' 4" x 9' 7" ( 4.98m x 2.92m )

- Double Glazed Bay Window
- Electric Heater

## Kitchen 7' 4" x 5' 11" ( 2.24m x 1.80m )

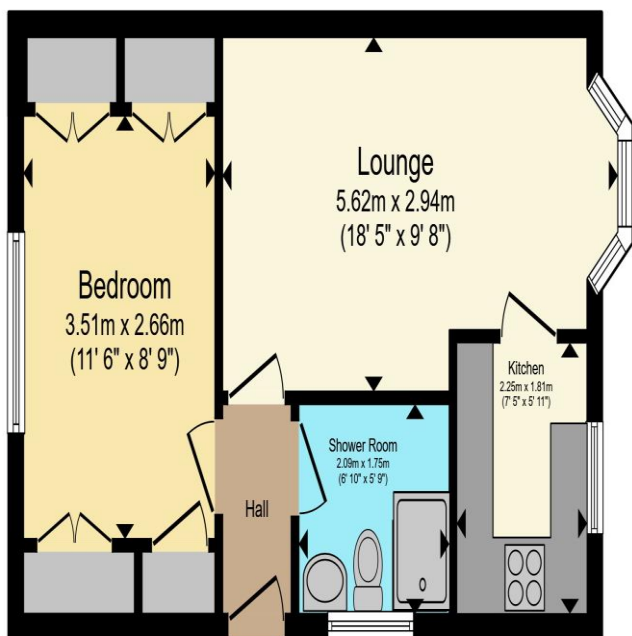
- Double Glazed Window
- Fitted Kitchen
- Free Standing Cooker

## Bedroom 1 11' 9" x 8' 9" ( 3.58m x 2.67m )

- Double Glazed Window
- Integrated Cupboards
- Electric Heater

## Communal Gardens Front & Rear





Total floor area 37.9 m<sup>2</sup> (408 sq.ft.) approx

This floor plan is for illustrative purposes only. It is not drawn to scale. Any measurements, floor areas (including any total floor area), openings and orientation are approximate. No details are guaranteed, they cannot be relied upon for any purpose and they do not form part of any agreement. No liability is taken for any error, omission or misstatement. A party must rely upon its own inspection(s). Powered by [www.propertybox.io](http://www.propertybox.io)



To view this property please contact Connells on

**T 0121 443 3357**  
**E [kingsheath@connells.co.uk](mailto:kingsheath@connells.co.uk)**

93 High Street Kings Heath  
 BIRMINGHAM B14 7BW

Property Ref: KTH310806 - 0011

Tenure:Leasehold EPC Rating: E

Council Tax Band: C Service Charge: £2600.00

Ground Rent: £75.00

This is a Leasehold property with details as follows; Term of Lease 99 years from 29 Sep 1984. Should you require further information please contact the branch. Please Note additional fees could be incurred for items such as Leasehold packs.

1. MONEY LAUNDERING REGULATIONS Intending purchasers will be asked to produce identification documentation at a later stage and we would ask for your co-operation in order that there will be no delay in agreeing the sale. 2. These particulars do not constitute part or all of an offer or contract. 3. The measurements indicated are supplied for guidance only and as such must be considered incorrect. Potential buyers are advised to recheck measurements before committing to any expense. 4. We have not tested any apparatus, equipment, fixtures, fittings or services and it is in the buyers interest to check the working condition of any appliances.

Connells Residential is registered in England and Wales under company number 1489613, Registered Office is Cumbria House, 16-20 Hockliffe Street, Leighton Buzzard, Bedfordshire, LU7 1GN. VAT Registration Number is 500 2481 05.

see all our properties at [www.connells.co.uk](http://www.connells.co.uk) | [www.rightmove.co.uk](http://www.rightmove.co.uk) | [www.zoopla.co.uk](http://www.zoopla.co.uk)