



Shirland Road, W9

£438 Per week

Recently refurbished two double bedroom flat with an open plan kitchen reception room. Located on the first floor, the flat has wooden flooring and a modern shower room. Parking on a first come first served basis.

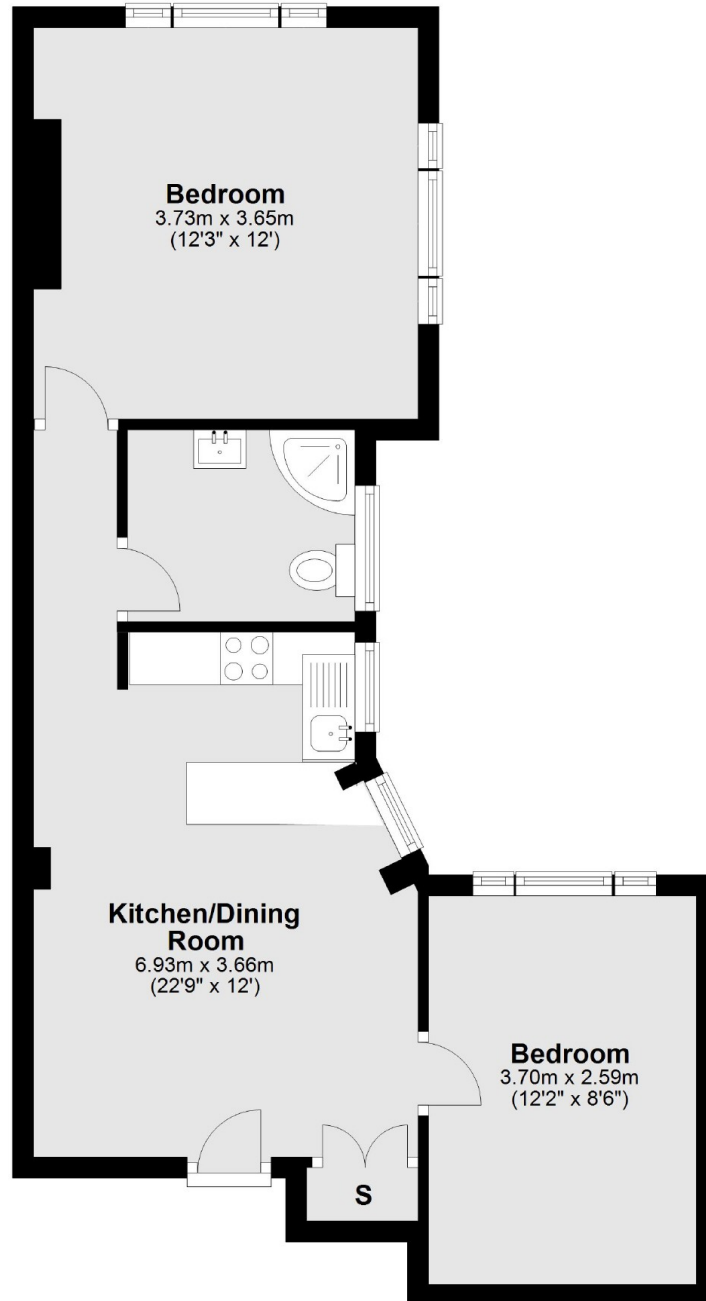
Chesney Court is located on the junction of Shirland Road and Elgin Avenue giving you quick access to the City and Central London on the Bakerloo Line.

Features

- Two Double Bedrooms
- Open Plan
- One Shower Room
- Wooden Flooring
- Parking
- Maida Vale Station

Shirland Road, Maida Vale, W9

First Floor



Total area: approx. 47.4 sq. metres (510.3 sq. feet)