

Guide Price £270,000



6A Exon Buildings Exeter Road, Cullompton, EX15 1DU

- With remaining NHBC warranty
- Kitchen with island/breakfast bar & integral appliances
- Three double bedrooms
- Top floor bedroom with Velux skylights & eaves storage
- Enclosed rear garden
- Open plan living room & kitchen/diner
- Entrance hall with downstairs cloakroom
- Family bathroom
- Large front garden with lawn and decked patio
- Gas central heating & double glazing

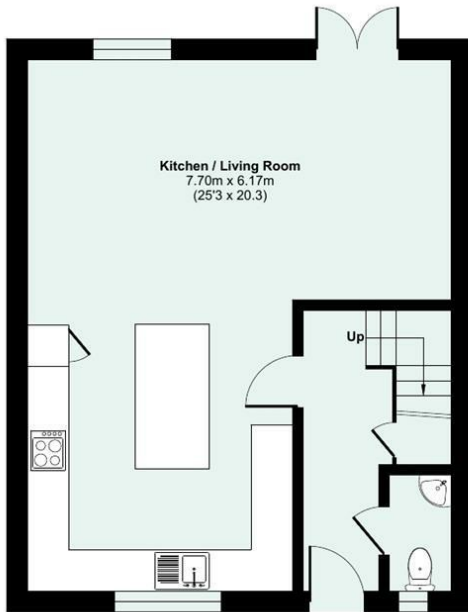
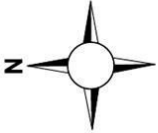
Sales, Lettings, Mortgages:

Bampton 01398 332006 | Cullompton 01884 32100 | Tiverton 01884 253500

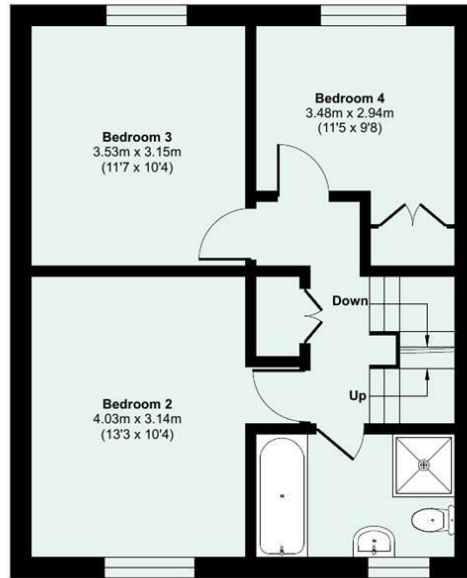
Watch the Seddons Video Tour

Built approximately 5 years ago and offering spacious open plan accommodation with three first floor bedrooms and a large top floor bedroom. No onward chain.

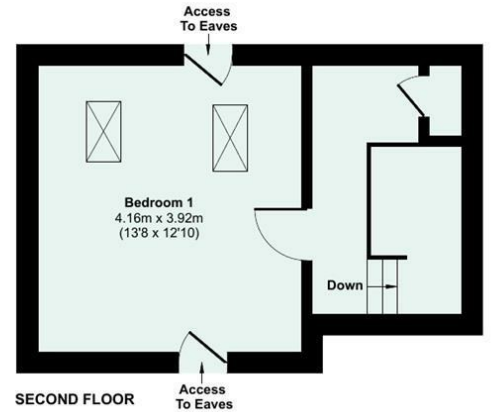
Approximate Area = 1279 sq ft / 118.8 sq m
For identification only - Not to scale



GROUND FLOOR



FIRST FLOOR



SECOND FLOOR

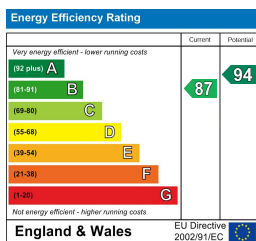
Floor plan produced in accordance with RICS Property Measurement 2nd Edition, Incorporating International Property Measurement Standards (IPMS2 Residential). © nchecom 2026. Produced for Seddon Estate Agents LLP. REF: 1424341



Council Tax Band

C

EPC Rating



Viewings

Viewings by arrangement only. Please call 01884 32100 to make an appointment.