



5a Kenway Road | Earls Court | London | SW5 0RP

£ 2,100 PCM

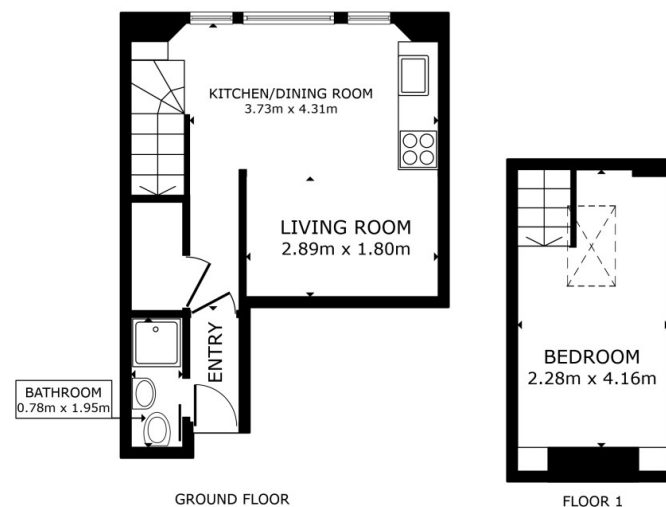
 cityrelay

5a Kenway Road | Earls Court  
 London | SW5 0RP  
 £ 2,100 PCM

A beautifully arranged and characterful studio apartment set within a charming period building in the heart of Earls Court, just a short three-minute walk from Earls Court Underground Station, offering swift access to the Piccadilly and District Lines.



- Third floor studio apartment
- High ceilings enhancing light and volume
- Bright interior with large sash windows
- Mezzanine bedroom creating defined living space
- Just 3 minutes' walk to Earls Court Station
- Modern fitted kitchen with integrated appliances



GROSS INTERNAL AREA  
 GROUND FLOOR 22.3 m<sup>2</sup> FLOOR 1 9.8 m<sup>2</sup>  
 TOTAL : 32.0 m<sup>2</sup>  
 SIZES AND DIMENSIONS ARE APPROXIMATE, ACTUAL MAY VARY.



Energy Efficiency Rating		Current	Potential
<i>Very energy efficient - lower running costs</i>			
(92 plus)	A		
(81-91)	B		
(69-80)	C		
(55-68)	D	66	81
(39-54)	E		
(21-38)	F		
(1-20)	G		
<i>Not energy efficient - higher running costs</i>			
<b>England &amp; Wales</b>		EU Directive 2002/91/EC	

Council Tax Band A  
 EPC Rating D

10 Cromwell Place  
 London  
 SW7 2JN  
 02038 650611  
 lettings@cityrelay.com