



 2
Bedrooms

 1
Bathroom



This unfurnished maisonette offers two double bedrooms, an open plan lounge, and a modern kitchen. It includes a private garden and an en bloc garage. Located in Wilmington, Kent, the property is close to popular schools and local amenities.

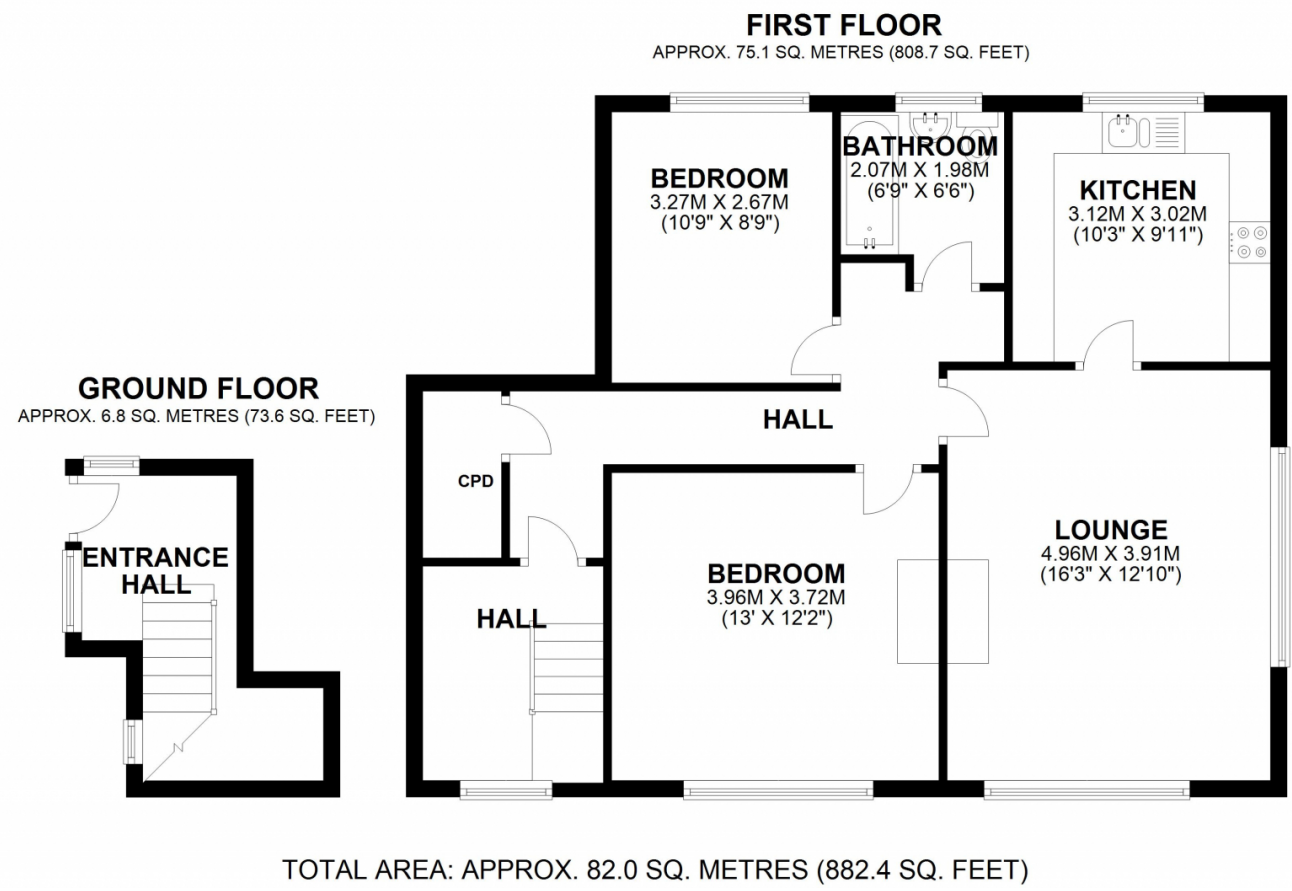
Located in Wilmington, Kent, this two-bedroom maisonette at Hulsewood Close offers a comfortable living space with practical features. The property includes two double bedrooms, a bathroom, and a reception area. The open plan lounge provides a spacious environment for relaxation and socializing, while the modern kitchen is equipped with ample storage and workspace, featuring wooden cabinets and integrated appliances.

The bathroom is fitted with contemporary fixtures, including a bathtub with an overhead shower, a washbasin, and a toilet. The property benefits from a private garden, offering an outdoor space for leisure and activities. Additionally, there is an en bloc garage providing secure parking or extra storage.

The maisonette is situated in a convenient location, close to popular schools, making it suitable for families. Wilmington offers a range of local amenities, including shops, parks, and transport links, ensuring easy access to surrounding areas. The property is unfurnished, allowing tenants to personalize the space to their preferences.

With its practical layout and desirable location, this maisonette presents a great rental opportunity in Wilmington, Kent.

Please note that the property is available from July, viewings can be arranged prior to this.



Energy Efficiency Rating		
	Current	Potential
Very energy efficient - lower running costs		
(92+) A		
(81-91) B		
(69-80) C	72	75
(55-68) D		
(39-54) E		
(21-38) F		
(1-20) G		
Not energy efficient - higher running costs		
England, Scotland & Wales		EU Directive 2002/91/EC

Address: Hulsewood Close, DA2 7AD

