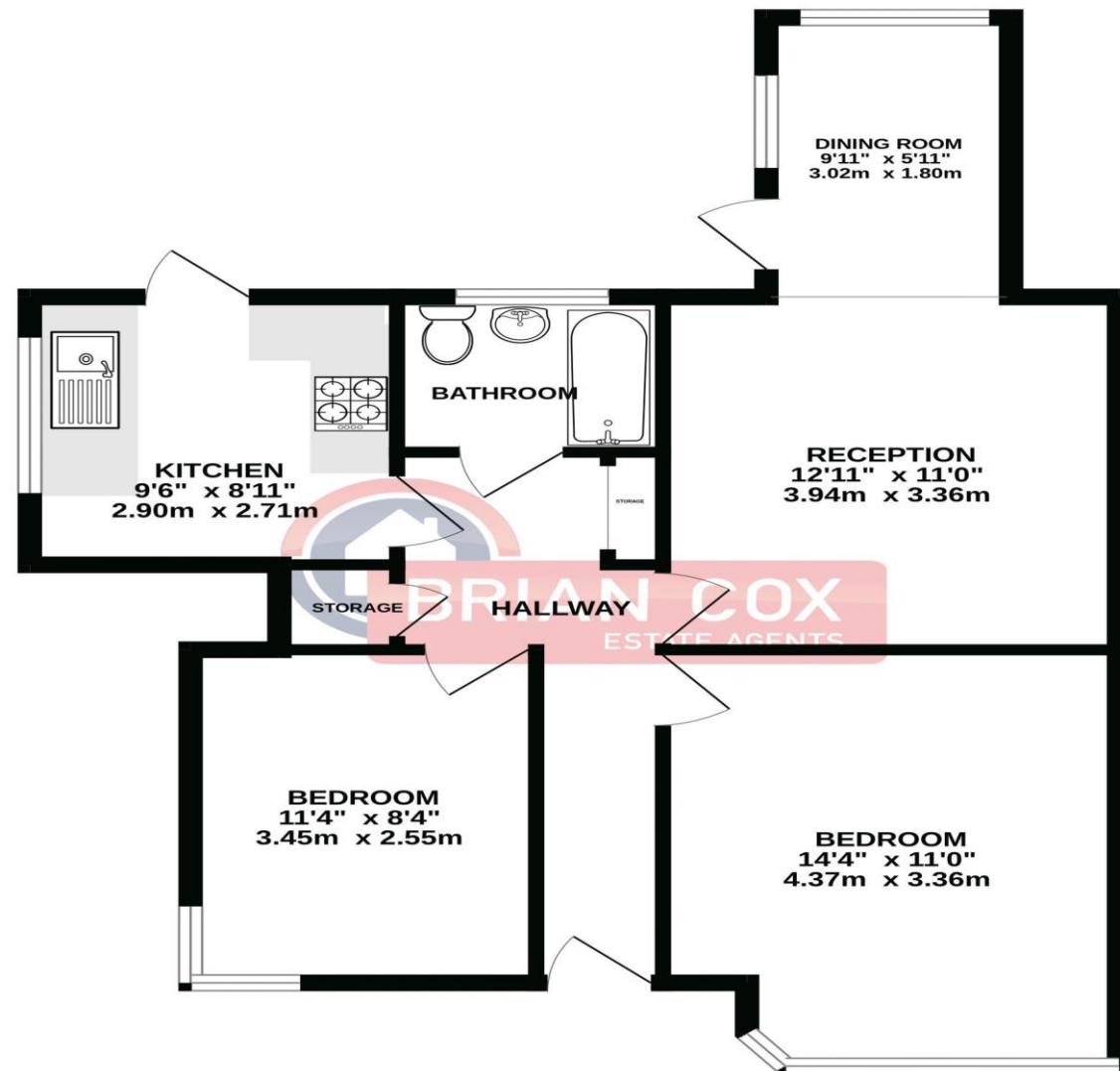


the floorplan...

GROUND FLOOR
661 sq.ft. (61.4 sq.m.) approx.



TOTAL FLOOR AREA : 661 sq.ft. (61.4 sq.m.) approx.
Whilst every attempt has been made to ensure the accuracy of the floorplan contained here, measurements of doors, windows, rooms and any other items are approximate and no responsibility is taken for any error, omission or mis-statement. This plan is for illustrative purposes only and should be used as such by any prospective purchaser. The services, systems and appliances shown have not been tested and no guarantee as to their operability or efficiency can be given.
Made with Metropix ©2025

more details from...

call: **Brian Cox Greenford: 0208 912 0006**
email: daniel.jed@brian-cox.co.uk
web: www.brian-cox.co.uk



0208 912 0006
brian-cox.co.uk



Brian Cox and Company are delighted to offer this CHAIN-FREE two-bedroom, purpose-built GROUND FLOOR maisonette to the market! The property is situated in a quiet cul de sac with the benefit of having shopping facilities, great schools and transport links including Harrow & Wealdstone Station all within walking distance. The property benefits from having a long lease of 920+ years, off-street parking and its own separate entrance. You are greeted by a good size front living room with plenty of natural light and a separate dining room, a bright kitchen with direct access to the garden. There are two spacious double bedrooms boasting lots of room and completing the internal layout is a fully tiled bathroom. Further benefits include a private rear garden with raised garden beds for keen gardeners, gas central heating and double-glazed windows.



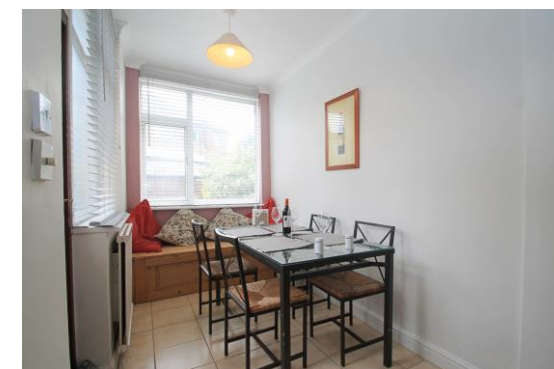
Offers in Excess of
£380,000

Ranmoor Gardens, Harrow HA1 1UQ



in brief...

- Two Bedroom Purpose Built Maisonette
- Ground Floor
- Off Street Parking
- Very Long Lease 920+ Years
- No Chain
- Private Rear Garden with Raised Garden Beds



the location...

- ### nearest stations ...
- Harrow & Wealdstone (0.3 miles)
 - Harrow-on-the-Hill (0.6 miles)
 - West Harrow Station (0.7 miles)
 - North Harrow (0.8 miles)

Harrow is a large suburban town in the London Borough of Harrow, North West London, England. It is centred 10.5 miles (16.9 km) North West of Charing Cross.

Harrow and Wealdstone station is serviced by The Metropolitan Line, Bakerloo Line, London Overground and the National Rail. Harrow has two large shopping centres which are St Anns and St Georges with its many large department stores, restaurants, cafes and cinema.

There are many local schools in the area some of these include St John Fisher Catholic Primary School, St Teresa's Catholic Primary School, Marlborough Primary School and Norbury School.

