

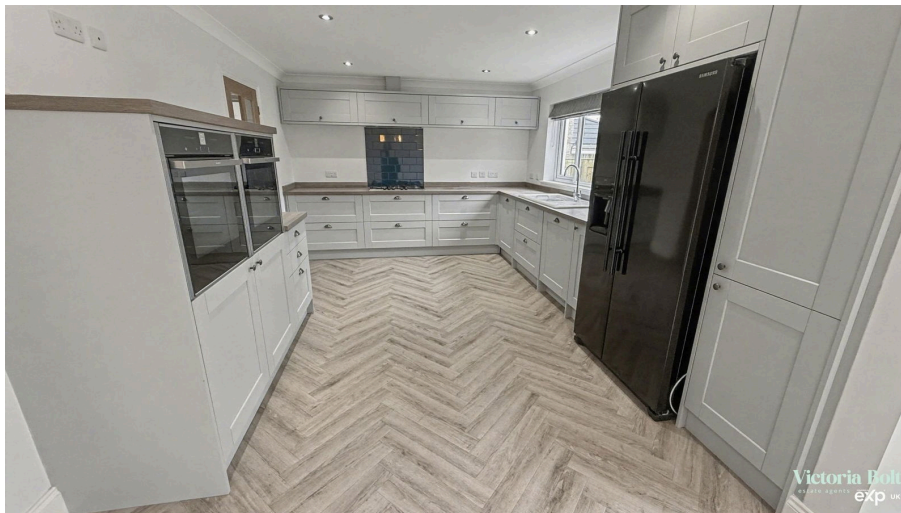


Victoria Bolt
estate agents POWERED BY **exp** UK

Waterslade Drive, Ivybridge

Guide Price £490,000

🛏 4 🚿 4 🛋 2



- Four/five bedroom detached family home
- Bi-fold doors opening onto the rear garden
- Master bedroom with built-in wardrobes and en-suite shower room
- Modern family bathroom serving bedrooms three and four
- Landscaped rear garden with large decked entertaining area
- Stunning open-plan kitchen/dining/family room
- Separate lounge plus additional versatile reception room
- Bedroom two with en-suite shower room and separate dressing room
- Utility room and ground floor cloakroom
- Driveway parking and offered with no onward chain



A beautifully presented four/five bedroom detached family home in a sought-after street in Ivybridge, offering a spacious lounge, kitchen/diner and additional 5th bedroom or study/playroom, two en-suite bedrooms and a landscaped rear garden. With driveway parking for two cars and no onward chain, this impressive property is ready to move straight into.

