



Dartmouth Road, NW2

£500,000

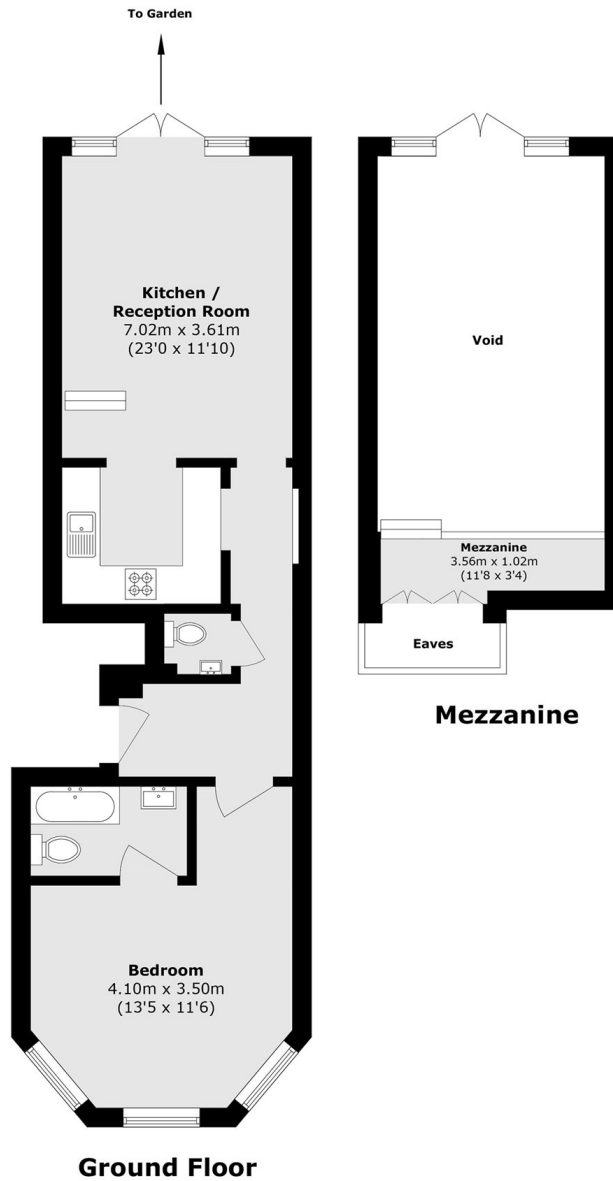
Situated within a beautiful detached building in the favourable Mapesbury Conservation area is this sought after one bedroom ground floor conversion, benefitting from access to a mature private garden, a spacious open plan living area, bathroom and additional WC, and off-street parking.

Dartmouth Road offers a quiet, leafy setting moments from the cafés, delis and shops of Willesden Green. It is also extremely well connected, with several stations within walking distance (including Willesden Green and Kilburn stations) providing good transport links to the city.

Features

- Share Of Freehold
- One Bedroom
- Open Plan
- Ground Floor Period Conversion
- Private Garden
- Off Street Parking

Dartmouth Road, London, NW2



Ground Floor

Total area (approx.): 51.6 sq. m (555.4 sq. ft)
Mezzanine area (approx.): 3.2 sq. m (34.4 sq. ft)
(Excluding Eaves & Void)