



**Long Meadow, Tiverton EX16 6EL**

**welcome to**

## **Long Meadow, Tiverton**

Call Fox & Sons today to arrange a viewing of this beautiful semi detached bungalow. Offering, two double bedrooms, a modern fitted kitchen. Lounge/ Diner and shower room. A great loft area with window. Front & Rear Gardens, Garage and Driveway parking.

### **Description**

Offered to the market with no onward chain is this superb semi detached bungalow which occupies a corner plot. The accommodation includes a front facing kitchen which is well equipped, with integrated appliances. The spacious lounge is also front facing with space for a dining table. There are two double bedrooms and a modern shower room. A standout feature of the property is the boarded loft area with a dormer window, providing valuable storage and offering potential to be converted into a bedroom, subject to the necessary permissions. Outside, this home benefits from a front and rear garden. The rear garden features a patio for a seating and laid with lawn, allowing access to the front of the property. There is a garage and driveway parking.

### **Entrance Hall**

Doors to all rooms, with a boiler cupboard, and loft hatch.

### **Kitchen**

Double-glazed window to the front, with a range of wall & base units, space for fridge/freezer, slimline dishwasher, and washing machine. Also a stainless-steel sink & drainer, an electric hob and oven with an extractor hood.

### **Lounge**

Double-glazed window to the front, and two radiators. Also with space for a dining table.





### **Bedroom One**

Double-glazed window to rear, and radiator.

### **Bedroom Two**

Double-glazed window to rear, and radiator.

### **Shower**

Double-glazed window to side, shower unit, a WC, and a wash hand basin. Also an extractor fan and is partially tiled.

### **Loft Area**

Double-glazed window to rear and a radiator. It is also boarded.

### **Rear Garden**

Patio for seating area, laid to lawn with access to the front of the property.

### **Garage & Driveway Parking**

Driveway parking for two cars.

### **Front Garden**

Laid to lawn with mature shrubs and an outside tap.



***view this property online*** [fox-and-sons.co.uk/Property/TVT106120](http://fox-and-sons.co.uk/Property/TVT106120)



welcome to

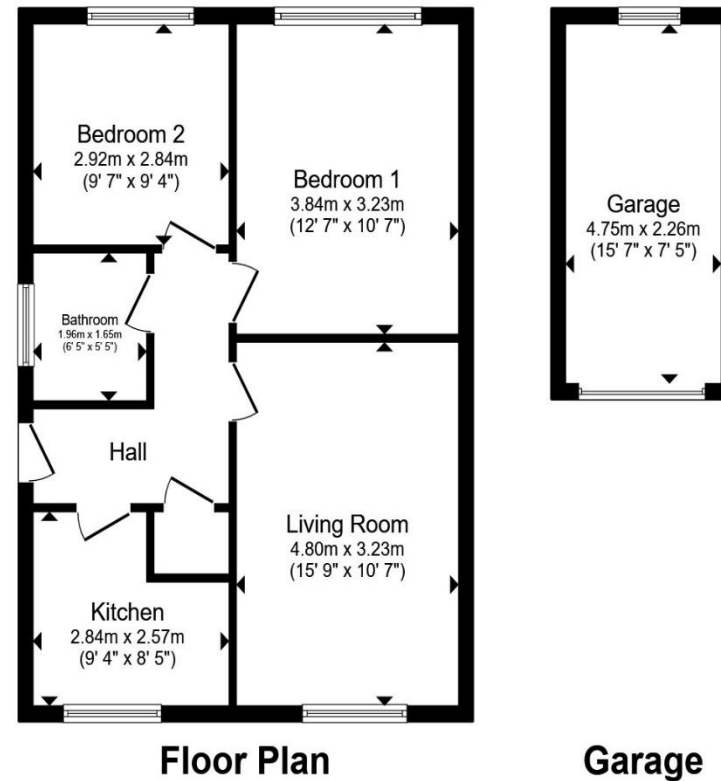
## Long Meadow, Tiverton

- Semi Detached Two Bedroom
- Modern Fitted Kitchen
- Lounge/ Diner
- Two Double Bedrooms
- Front & Rear Gardens

Tenure: Freehold EPC Rating: C  
Council Tax Band: B

guide price

**£275,000**



Total floor area 66.3 m<sup>2</sup> (713 sq.ft.) approx

This floor plan is for illustrative purposes only. It is not drawn to scale. Any measurements, floor areas (including any total floor area), openings and orientation are approximate. No details are guaranteed, they cannot be relied upon for any purpose and they do not form part of any agreement. No liability is taken for any error, omission or misstatement. A party must rely upon its own inspection(s). Powered by [www.propertybox.io](http://www.propertybox.io)



view this property online [fox-and-sons.co.uk/Property/TVT106120](http://fox-and-sons.co.uk/Property/TVT106120)



Property Ref:  
TVT106120 - 0003

1. MONEY LAUNDERING REGULATIONS Intending purchasers will be asked to produce identification documentation at a later stage and we would ask for your co-operation in order that there is no delay in agreeing the sale. 2. These particulars do not constitute part or all of an offer or contract. 3. The measurements indicated are supplied for guidance only and as such must be considered incorrect. Potential buyers are advised to recheck measurements before committing to any expense. 4. We have not tested any apparatus, equipment, fixtures or services and it is in the buyers interest to check the working condition of any appliances. 5. Where an EPC, or a Home Report (Scotland only) is held for this property, it is available for inspection at the branch by appointment. If you require a printed version of a Home Report, you will need to pay a reasonable production charge reflecting printing and other costs. 6. We are not able to offer an opinion either written or verbal on the content of these reports and this must be obtained from your legal representative. 7. Whilst we take care in preparing these reports, a buyer should ensure that his/her legal representative confirms as soon as possible all matters relating to title including the extent and boundaries of the property and other important matters before exchange of contracts.

Fox & Sons is a trading name of Sequence (UK) Limited which is registered in England and Wales under company number 4268443, Registered Office is Cumbria House, 16-20 Hockliffe Street, Leighton Buzzard, Bedfordshire, LU7 1GN. VAT Registration Number is 500 2481 05.



**01884 256041**



[tiverton@fox-and-sons.co.uk](mailto:tiverton@fox-and-sons.co.uk)



36 Bampton Street, TIVERTON, Devon, EX16 6AH



[fox-and-sons.co.uk](http://fox-and-sons.co.uk)