

ROYAL GREEN

EASEBOURNE

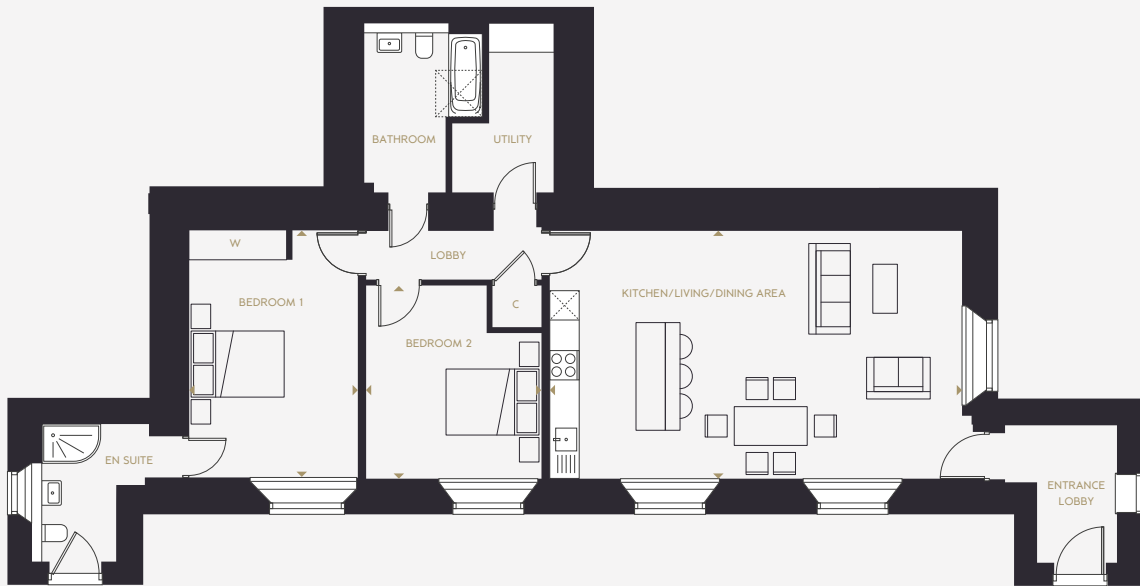
MEWS COTTAGES | HOME 18

2 BEDROOMS | 1117 sq ft



SPECIFICATION HIGHLIGHTS

- Fully fitted kitchen with Quartz worktops and integrated appliances
- Separate utility
- Original exposed roof trusses and beams in the vaulted ceiling in kitchen/living area
- En suite to bedroom 1
- Flagstone tiles in entrance hall
- Original Bell tower
- Roof light to bathroom
- Porcelanosa tiling and Karndean flooring throughout
- Underfloor heating throughout



Kitchen/Living/Dining Area

8425mm x 5060mm 27' 8" x 16' 7"

Bedroom 1

5124mm x 3444mm 16' 10" x 11' 4"

Bedroom 2

3945mm x 3580mm 12' 11" x 11' 9"

Floorplans shown are for approximate measurements only. Exact layout and sizes may vary. Kitchen and utility room layouts to be confirmed. Bathroom layouts are indicative and subject to change. All measurements may vary within a tolerance of 5%. The information in this document is indicative and is intended to act as a guide only as to the finished product. Accordingly, due to our policy of continuous improvement, the finished product may vary from the information provided. The items within this specification are for guidance only and may be substituted at any time. The information in this document is indicative and intended only as a guide to the finished product. These particulars should not be relied upon as accurately reflecting any of the matters covered by any order under the Unfair Trading Regulations 2008 (CPRs). This information does not constitute a contract, or warranty. The dimensions given on plans are subject to minor variations and are not intended to be used for carpet sizes, appliance sizes or items of furniture. Applicants are advised to contact selling agent to ascertain the availability of any property. Computer generated illustrations indicative only. Please check with a member of the Metis Homes team for the latest information. Computer Generated Images (CGIs) are indicative and intended for guidance only. Correct at time of going to print. Revision 03.

Royal Green, Easebourne Street, Easebourne, GU29 0BD

Address correct for SatNav. Development address to be confirmed.

sales@metishomes.co.uk

01962 893545

