



Wick Farm Close, Watton Thetford IP25 6BN

welcome to

Wick Farm Close, Watton Thetford

A well-presented two-bedroom detached bungalow set in a peaceful cul-de-sac in Wick Farm Close. Offering a bright lounge, modern kitchen, two good-sized bedrooms and a contemporary bathroom. Outside features a private rear garden, driveway parking and a garage.



Entrance Hall

Vinyl flooring, Radiator, UPVC double glazed door to the front aspect, Loft access

Lounge

Carpet flooring, Radiator, Double glazed window to the front aspect, Fitted blinds

Kitchen

Vinyl flooring, Radiator, Range of wall mounted low level units, Complimentary rolled edge worksurfaces, Integrated gas hob, Enclosed extractor hood, Integrated oven, Inset 1.5 sink/drainers, Double glazed window to the rear aspect, Space for dishwasher, Space for fridge freezer

Bedroom One

Carpet flooring, Double glazed window to the front aspect, Radiator, Fitted blinds

Bedroom Two

Carpet flooring, Radiator, Double glazed window to the rear aspect

Bathroom

Tiled flooring, Frosted double glazed window to the rear aspect, Wall-mounted heated towel rail, Extractor fan, Handwash basin with storage, airing cupboard, Corner shower cubicle, Low-level WC

Garage

Carpet tile flooring, Plumbing for washing machine, Power and electric, Electric roller door, Personal door to the rear

Outside

To the rear of the property there is a fully enclosed garden, laid to lawn with patio area and mature shrubs. The garden has side access and UPVC storage shed.



view this property online williamhbrown.co.uk/Property/WAT108996



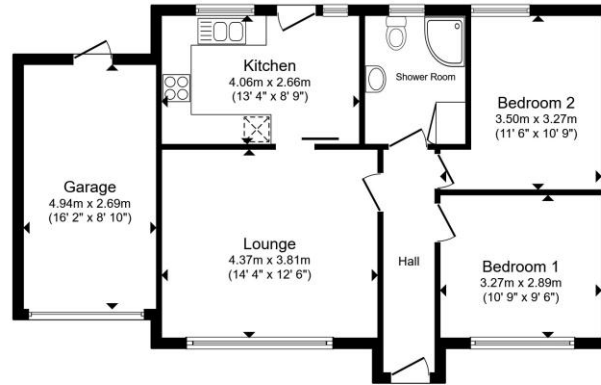
welcome to

Wick Farm Close, Watton Thetford

- Well-presented two-bedroom detached bungalow
- Quiet and highly sought-after cul-de-sac location
- Light and spacious lounge with dining space
- Modern, well-equipped kitchen with garden access
- Two good-sized bedrooms offering versatile use

Tenure: Freehold EPC Rating: D

Council Tax Band: B



Floor Plan

£230,000

Total floor area 72.4 m² (779 sq.ft.) approx
This floor plan is for illustrative purposes only. It is not drawn to scale. Any measurements, floor areas (including any total floor area), openings and orientation are approximate. No details are guaranteed, they cannot be relied upon for any purpose and they do not form part of any agreement. No liability is taken for any error, omission or misstatement. A party must rely upon its own inspection(s). Powered by www.propertybox.io



Please note the marker reflects the postcode not the actual property

view this property online [williambrown.co.uk/Property/WAT108996](https://www.williambrown.co.uk/Property/WAT108996)



Property Ref:
WAT108996 - 0003

1. MONEY LAUNDERING REGULATIONS Intending purchasers will be asked to produce identification documentation at a later stage and we would ask for your co-operation in order that there is no delay in agreeing the sale. 2. These particulars do not constitute part or all of an offer or contract. 3. The measurements indicated are supplied for guidance only and as such must be considered incorrect. Potential buyers are advised to recheck measurements before committing to any expense. 4. We have not tested any apparatus, equipment, fixtures or services and it is in the buyers interest to check the working condition of any appliances. 5. Where an EPC, or a Home Report (Scotland only) is held for this property, it is available for inspection at the branch by appointment. If you require a printed version of a Home Report, you will need to pay a reasonable production charge reflecting printing and other costs. 6. We are not able to offer an opinion either written or verbal on the content of these reports and this must be obtained from your legal representative. 7. Whilst we take care in preparing these reports, a buyer should ensure that his/her legal representative confirms as soon as possible all matters relating to title including the extent and boundaries of the property and other important matters before exchange of contracts.

William H Brown is a trading name of Sequence (UK) Limited which is registered in England and Wales under company number 4268443, Registered Office is Cumbria House, 16-20 Hockliffe Street, Leighton Buzzard, Bedfordshire, LU7 1GN. VAT Registration Number is 500 2481 05.



william h brown



01953 881951



Watton@williambrown.co.uk



9 High Street, Watton, THETFORD, Norfolk,
IP25 6AB



williambrown.co.uk