



Becket House, Brentwood, CM14 4GB
£1,650 Per calendar month

Jenkins Property

T: 01277228620

E: LETTINGS@JENKINS-PROPERTY.COM

WWW.JENKINS-PROPERTY.COM

Jenkins Property

Two Bedroom Two Bathroom Flat. Located a short distance from Brentwood Town and Station. Comes with concierge and two lifts to all floors. The property consists of two double bedrooms. Two bathrooms, one being en-suite. Large open plan lounge, which benefits from a remote control projector screen and open plan fully fitted kitchen. Access to private balcony. Secure and gated parking with fob access - and direct access to the building. Available Now.



Open Plan Lounge 13'9" x 12'4" (4.2 x 3.77)

Laid with wood flooring. Painted walls. Double glazed doors opening to balcony, overlooking Brentwood. Wall mounted heating.

Bathroom 7'1" x 6'6" (2.16 x 2)

Laid with tiled flooring. Painted and tiled walls. Three piece bathroom suite. Separate shower over bath.

En-Suite 8'2" x 4'0" (2.5 x 1.22)

Tiled flooring. Painted wand tiled walls. Walk in shower cubicle. Low level WC. Hand wash basin.

Open Plan Kitchen 9'2" x 8'2" (2.79m x 2.49m)

Laid with tiled flooring. Painted walls with splash back. Arrangement of eye and base level units. Integrated white good appliances including washer/dryer, fridge freezer, microwave and dishwasher.

Balcony 8'2" x 5'0" (2.5 x 1.54)

Access via patio door. Corner plot. Viewing glass overlooking Brentwood.

Bedroom One 13'1" x 9'10" (3.99m x 3.00m)

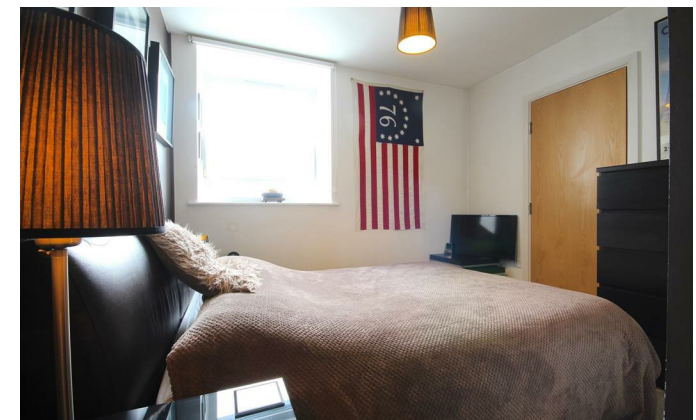
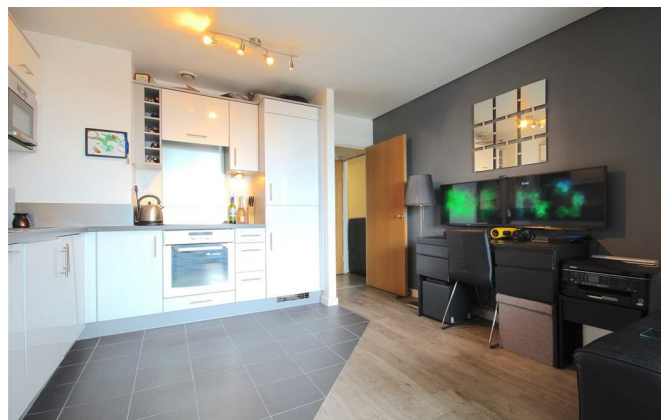
Laid with carpet. Painted walls. Double glazed windows. Wall mounted heating.

Parking

Parking behind gates. Fob access with direct access to building.

Concierge

Concierge to take all parcels and post.



- Two Bedroom Flat
- Gated Parking

- Two Bathrooms
- Concierge

- Corner Plot
- Available July

bull

