



## PRIORY LANE, SW15

£325,000

One bedroom flat  
Second floor  
Separate modern kitchen  
Lovely views and aspect  
Off-street car parking  
Richmond Park

@marshandparsons  
marshandparsons.co.uk

MARSH &  
PARSONS



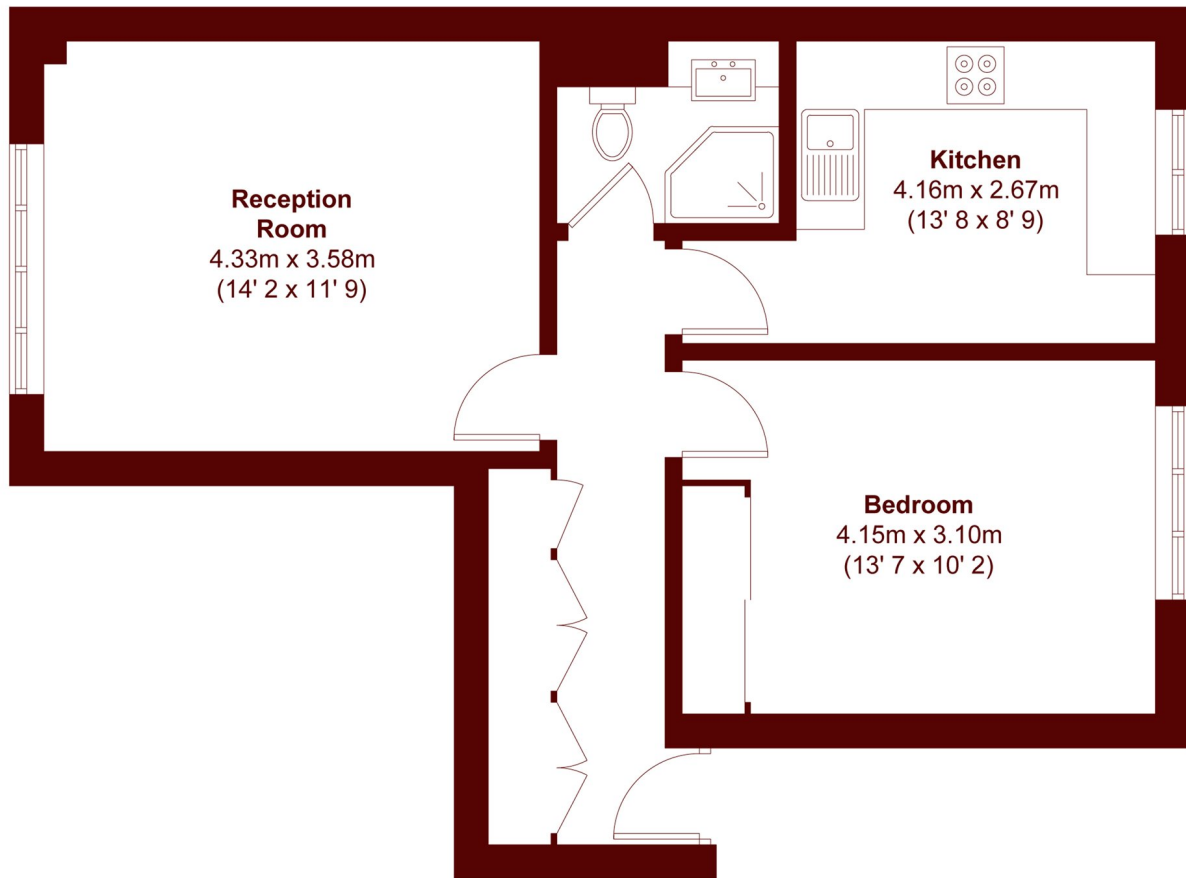
# ABOUT THE PROPERTY

Marsh & Parsons are delighted to market this one bedroom flat overlooking Roehampton Golf Club.

Situated moments from Richmond Park, this distinguished address benefits from unparalleled proximity to elite sporting amenities including the renowned National Tennis Centre, Roehampton Club, and Bank of England Sports Centre. For convenience, Barnes Station lies within an easy half-mile stroll, facilitating swift access to Central London.



# STEP INSIDE PRIORY LANE



APPROX. GROSS INTERNAL FLOOR AREA  
545 SQFT / 50.6 SQM

**Barnes & East Sheen**  
020 8563 8333

Energy Rating: D We aim to make our particulars both accurate and reliable. However, they are not guaranteed; nor do they form part of an offer or contract. If you require clarification on any points then please contact us, especially if you're traveling some distance to view. Please note that appliances and heating systems have not been tested and therefore no warranties can be given as to their good working order

**MARSH &  
PARSONS**