

97, Oswald Road, Chorlton Cum Hardy, Manchester, M21 9GE



JP & Brimelow
ESTATE AGENTS



3 1 2 C

VIDEO TOUR AVAILABLE A stunning THREE DOUBLE BEDROOM, bay fronted, mid terrace property, located on a highly sought after residential road in Chorlton, off Kensington Road.

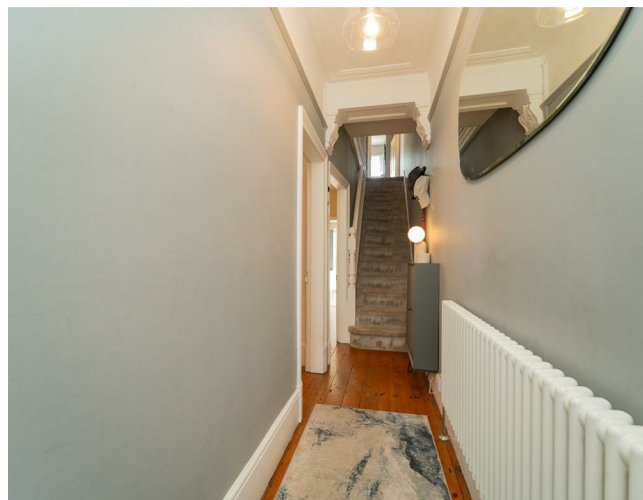
Just a short walk from Chorlton Village, this location puts you right by excellent primary schools and a wide range of local amenities, including restaurants, delis, and shops along Manchester Road. The nearby Metrolink station on Wilbraham Road also provides direct connections to the city centre, Manchester airport and MediaCity at Salford Quays.

The thoughtfully designed property comprises an entrance hall, a cosy front lounge featuring a bay window, picture rails, and stripped, varnished floorboards. To the rear, there is a dining room that flows through to a modern fitted kitchen, which in turn provides access to the rear garden.

Stairs lead to the first floor, where you'll find three double bedrooms, including a principal room with sash windows and useful built-in storage. A modern three-piece bathroom suite completes this charming home.

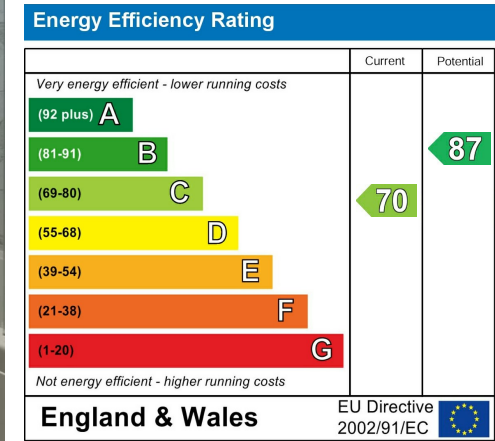
The property further benefits from gas-fired central heating and an array of period features, including high ceilings, stripped and varnished floorboards, picture rails, and a tiled vestibule, along with a private enclosed rear garden. Early viewing is highly recommended to fully appreciate all this property has to offer.

£495,000



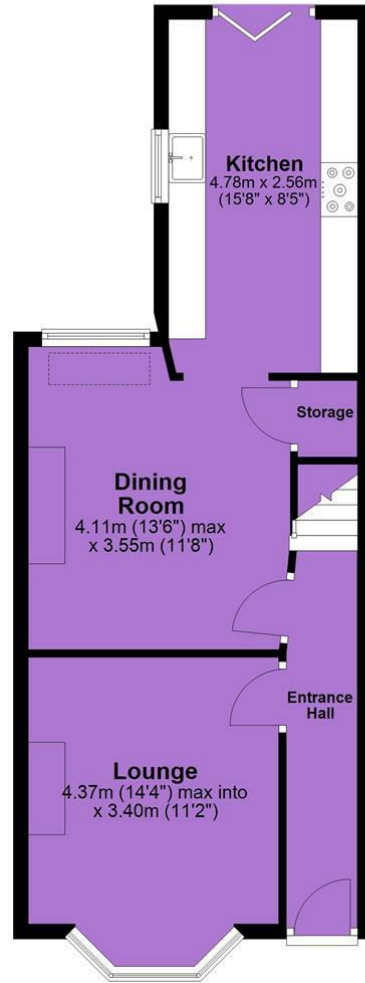


EPC Chart



Tenure: Freehold Council Tax Band: B

Ground Floor



First Floor



JP & Brimelow Estate Agents Ltd
430 Barlow Moor Road, Manchester, M21 8AD
Tel: 0161 8822233
E: sales@jpbrimelow.co.uk www.jpandbrimelow.co.uk



JP & Brimelow
ESTATE AGENTS

NOTICE: JP & Brimelow Estate Agents Ltd for themselves and for the vendors or lessors of this property whose agents they are give notice that:

- (i) the particulars are set out as a general outline only for the guidance of intending purchasers or lessees, and do not constitute, nor constitute part of, an offer or contract;
- (ii) all descriptions, dimensions, references to the condition and necessary permissions for use and occupation, and other details are given in good faith and are believed to be correct but any intending purchasers or tenants should not rely on them as statements or representations of fact but must satisfy themselves by inspection or otherwise as to the correctness of each of them;
- (iii) no person in the employment of JP & Brimelow Estate Agents Ltd has any authority to make or give any representation or warranty whatever in relation to this property.

jpandbrimelowstateagents

@jpandbrimelow

