



Ravensthorpe Drive
Loughborough

1 Bed 1st Floor Apartment • LE11 4WA • £725 pcm • £830 Deposit



Ravensthorpe Drive, Loughborough

A one bedroom ground floor apartment, set on a quiet road in Loughborough. This furnished property comes with a double bedroom, kitchen, lounge, and bathroom. Appliances are included. Available now.

Lounge / Diner

Overlooking Ravensthorpe Drive, a sizeable lounge, that could also be used as a diner.

Kitchen

An L-shaped kitchen, including an under counter fridge, freezer, washing machine, oven, and hob.

Bedroom

A good sized double bedroom, including built-in storage and furniture pictured.

Bathroom

A three piece bathroom, including a bath, sink, toilet, and shower above the bath.

Parking

On street parking available without restriction.

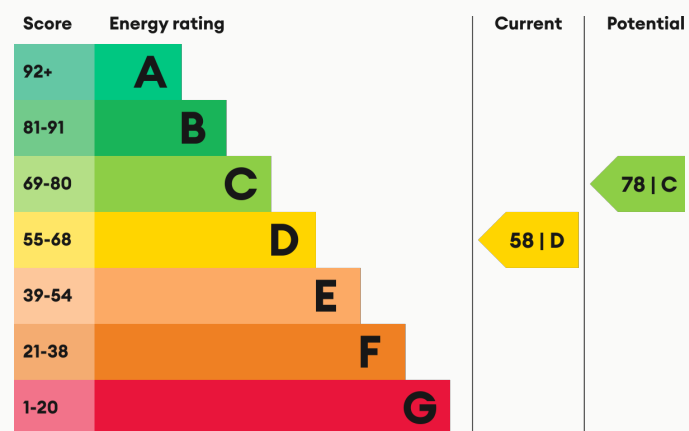
Electric Heating

Electric heating throughout.

Glazing

Modern, good quality, uPVC double glazing.

Energy Performance



We aim to make our particulars both accurate and reliable. However they are not guaranteed; nor do they form part of an offer or contract. If you require clarification on any points then please contact us, especially if you are traveling some distance to view. All measurements are to widest point.



Kitchen



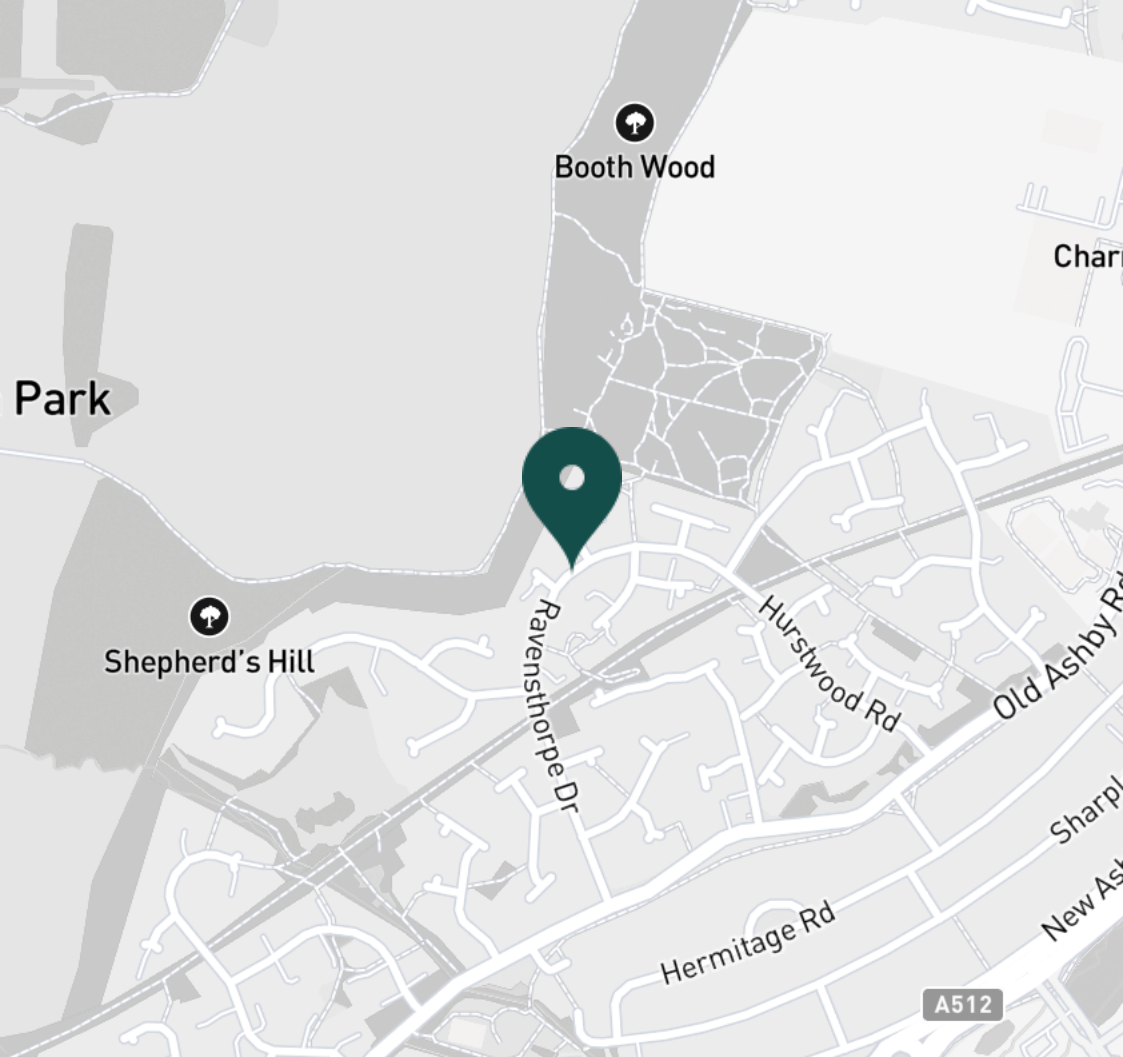
Kitchen



Lounge



Lounge



SUPERMARKETS

Co-op Food Knightthorpe Rd	1.3 mi
Morrisons Loughborough	1.9 mi
Lidl Loughborough	2.0 mi
Sainsburys Loughborough	2.1 mi
Aldi Loughborough	2.2 mi

GYMS

Holywell Fitness Centre	1.2 mi
Burleigh Springs Leisure Club	1.3 mi
Loughborough University Pool	1.6 mi
Loughborough Sport	1.7 mi
Radmoor Centre	1.7 mi

TRAIN STATIONS

Loughborough	3.0 mi
Barrow upon Soar	5.5 mi
Sileby	7.4 mi
East Midlands Parkway	10.2 mi
Syston	11.7 mi

NURSERY SCHOOLS

Charnwood College Playgroup	0.9 mi
Little House Day Nursery	1.3 mi
Kingscliffe Day Nursery	1.7 mi
Loughborough Campus Nursery	1.8 mi
Nanpantan Nursery School	1.8 mi

PRIMARY SCHOOLS

Booth Wood PS	0.6 mi
Ashmount Sch	0.7 mi
Thorpe Acre Junior Sch	1.0 mi
St Marys Catholic PS	1.9 mi
Stonebow County PS	1.9 mi

HIGH SCHOOLS

Ashmount Sch	0.7 mi
De Lisle Catholic Science C	0.8 mi
The Garendon High Sch	0.8 mi
Charnwood College	0.9 mi
Loughborough College	1.7 mi

Discover
Loughborough





Lounge



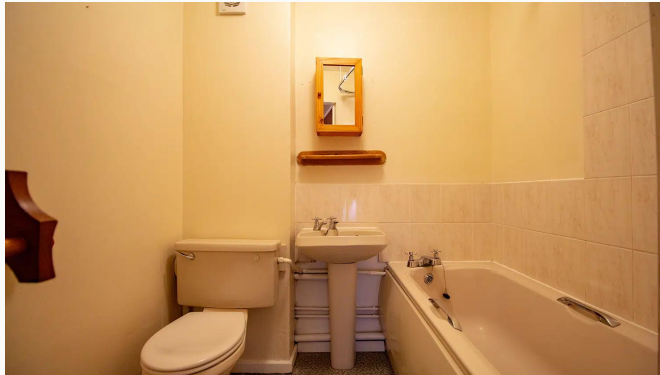
Bedroom



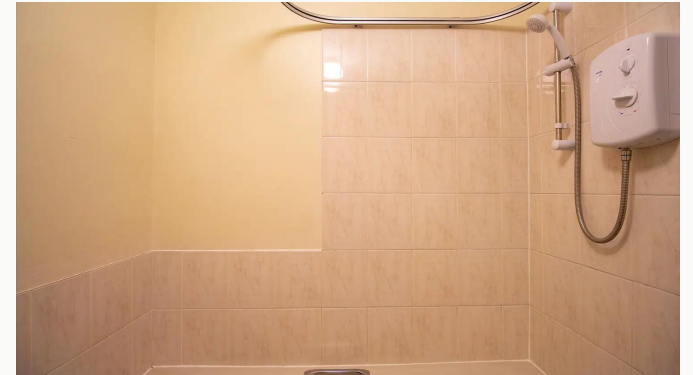
Bedroom



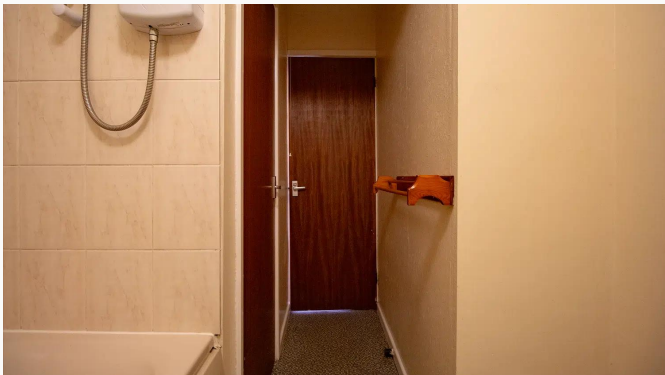
Bedroom



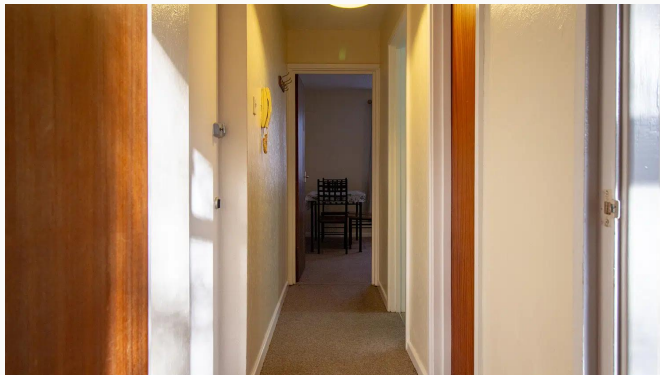
Bathroom



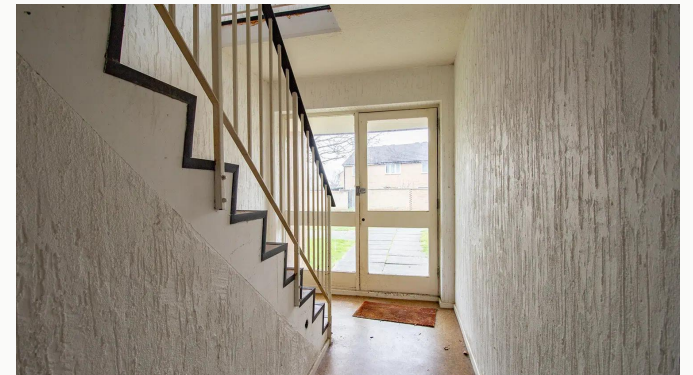
Bathroom



Bathroom



Hallway



Block Entrance



Block Entrance

Available
From 27/03/2026

Comes
Furnished

Bedrooms
1

Receptions
1

Bathrooms
1

Parking
On Street

Postcode
LE11 4WA

Rent
£725 pcm

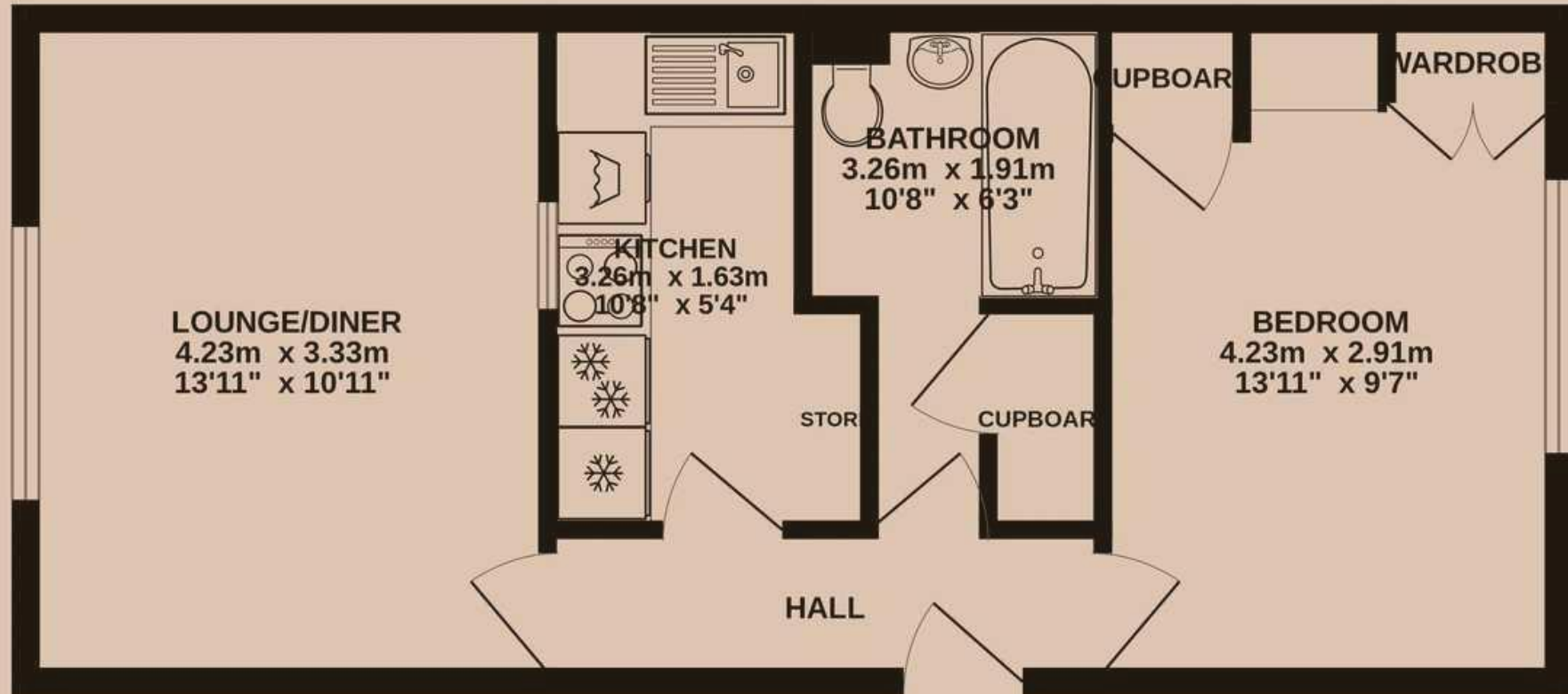
Deposit
£830

EPC
58 | D

Council Tax Band
A

ID
#19220

Updated
22/04/2026



Have a property like this? Let's work together.

Design and marketing are at the heart of our approach. With most people now looking for property online, we can get our clients' properties in front of as many people as the most prominent national agents. Where we differ is in the quality of our work. We create stunning digital particulars that highlight the individual attributes of every property we market, with videos and floor plans as standard.



OUR OFFICE
7 Biggin Street
Loughborough, LE11 1UA

CONTACT US
01509 320 320
let@huntleys.net

