

# The Hermitage Westbury Shrewsbury SY5 9QX



5 Bedroom House - Detached  
£2,950 PCM

## The features

- NEWLY RENOVATED 4 BEDROOM DETACHED HOME WITH 1 BEDROOM ANNEX
- LOCALLY SOURCED KITCHEN WITH APPLIANCES
- 3 DOUBLE BEDROOMS WITH ENSUITE
- FAMILY BATHROOM
- LARGE DRIVEWAY, GARDENS SET IN 0.78 OF AN ACRE
- THREE EXTREMELY SPACIOUS RECEPTION ROOMS WITH LOG BURNERS OR OPEN FIRES
- UTILITY ROOM, WC
- FURTHER DOUBLE BEDROOM
- 1 BED ANNEX WITH KITCHEN, LIVING AND BATHROOM
- EPC RATING TBC



**\*\*AN EXQUISITE, METICULOUSLY RENOVATED 4 BEDROOM DETACHED HOME BENEFITTING FROM 1 BEDROOM ANNEX IN THE HEART OF WESTBURY\*\***

This beautifully refurbished 4-bedroom detached home blends period charm with high-quality modern finishes, offering generous living accommodation. Every detail has been carefully considered and sourced locally. Creating a warm, inviting, and highly functional family home. The property also benefits from outbuilding storage space.

The property further benefits from a superb 1-bedroom annex, ideal for multigenerational living, guest accommodation, or a premium home-office suite. Fully self-contained, it provides exceptional flexibility and significant value.

Positioned within a desirable village setting, the home enjoys excellent access to local amenities, scenic countryside walks, and convenient transport links—making it perfect for families, professionals, or anyone seeking a peaceful yet well-connected lifestyle.

## **Property details**

### **UTILITY ROOM**

### **WC**

### **KITCHEN**

### **RECEPTION ROOM 1**

### **RECEPTION ROOM 2**

### **HALLWAY**

### **RECEPTION ROOM 3**

### **STAIRS AND LANDING**

### **BEDROOM 1**

### **ENSUITE**

### **BEDROOM 2**

### **ENSUITE**

### **BEDROOM 3**

### **FAMILY BATHROOM**

### **BEDROOM 4**

### **ENSUITE**

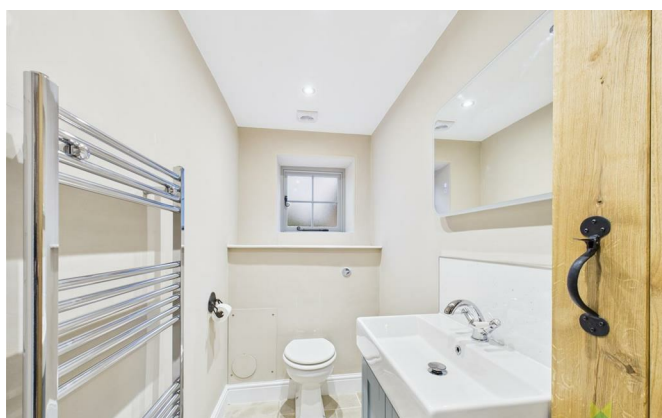
### **THE ANNEX**

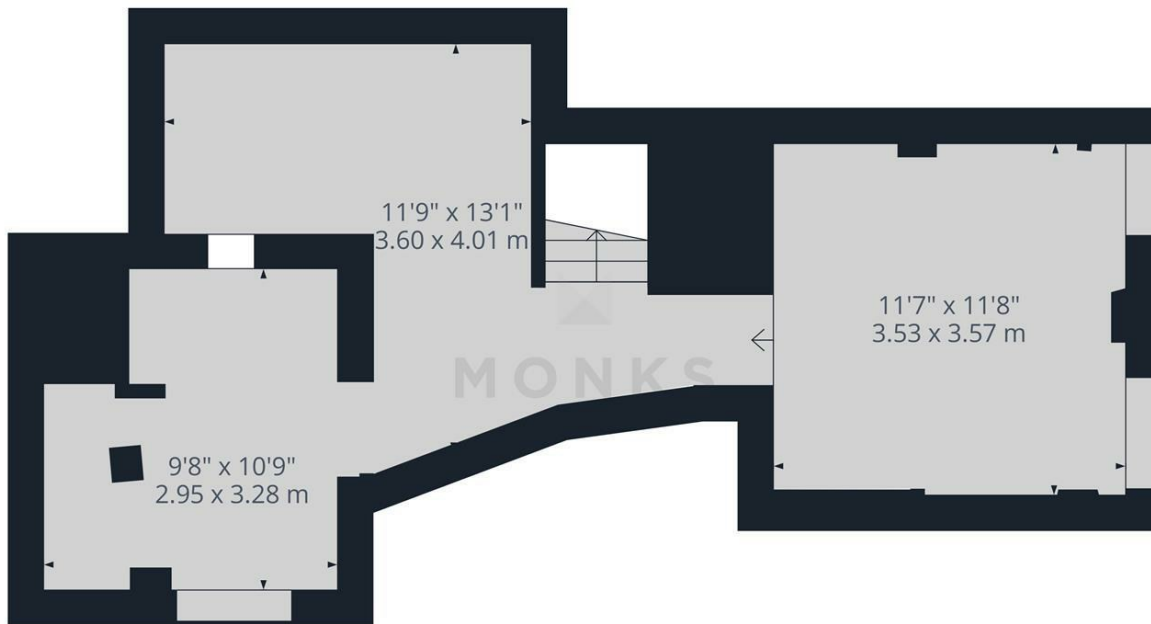
### **OUTSIDE AND GARDENS**



## The Hermitage , Westbury, Shrewsbury, SY5 9QX.

5 Bedroom House - Detached  
£2,950 PCM





**Approximate total area<sup>®</sup>**  
394 ft<sup>2</sup>  
36.7 m<sup>2</sup>

(1) Excluding balconies and terraces

Calculations reference the RICS IPMS 3C standard. Measurements are approximate and not to scale. This floor plan is intended for illustration only.

GIRAFFE360

Floor -1



## Judy Bourne

**Director at Monks**

judy@monks.co.uk

## Get in touch

**Call.** 01743 361422

**Email.** info@monks.co.uk

**Click.** www.monks.co.uk

## Shrewsbury office


10a-11 Shoplatch,  
Shrewsbury, Shropshire, SY1

## We're available 7 days a week


HOME – four words that define who,  
and what we are:

**Honest, Original, Motivated, Empathetic**

### Energy Efficiency Rating

	Current	Potential
Very energy efficient - lower running costs		
(92 plus) <b>A</b>		
(81-91) <b>B</b>		
(69-80) <b>C</b>		
(55-68) <b>D</b>		
(39-54) <b>E</b>		
(21-38) <b>F</b>		
(1-20) <b>G</b>		
Not energy efficient - higher running costs		
<b>England &amp; Wales</b>	EU Directive 2002/91/EC	

### Environmental Impact (CO<sub>2</sub>) Rating

	Current	Potential
Very environmentally friendly - lower CO2 emissions		
(92 plus) <b>A</b>		
(81-91) <b>B</b>		
(69-80) <b>C</b>		
(55-68) <b>D</b>		
(39-54) <b>E</b>		
(21-38) <b>F</b>		
(1-20) <b>G</b>		
Not environmentally friendly - higher CO2 emissions		
<b>England &amp; Wales</b>	EU Directive 2002/91/EC	

Monks for themselves and for the vendors of this property, whose agents they are give notice that:

- These particulars provide a general outline only for the guidance of intended purchasers and do not constitute part of an offer or contract.
- All descriptions, dimensions and distances are approximate, references to state and condition, relevant permissions for use and occupation and other details are provided in good faith and believed to be correct.
- No person in the employment of Monks has any authority to make or give any representation or warranty whatever in relation to this property.
- Electrics and other appliances mentioned in these particulars have not been tested by Monks. Therefore prospective purchasers must satisfy themselves as to their working order.