



**Guide Price**  
**£285,000**

**Freehold**

3x  1x  2x 

**Pagitt Street, Chatham,  
Kent, ME4**

**OVER 60?**

Secure this property  
for up to **59% less!**

*Wards*  
Helping you move forwards

## Accommodation

### GROUND FLOOR

Entrance Hallway

Lounge: 10'10 x 10'9 (3.30m x 3.28m)

Dining Area: 13'1 x 9'10 (3.99m x 3.00m)

Kitchen / Breakfast Room: 17'8 x 9'2 (5.39m x 2.80m)

### BASEMENT

Cellar Room: 14'3 x 13'3 (4.35m x 4.04m)

### FIRST FLOOR

Landing

Bedroom 1: 14'2 x 11'0 (4.32m x 3.36m)

Bedroom 2: 13'0 x 9'0 (3.97m x 2.75m)

Bedroom 3: 9'4 x 9'2 (2.85m x 2.80m)

Bathroom

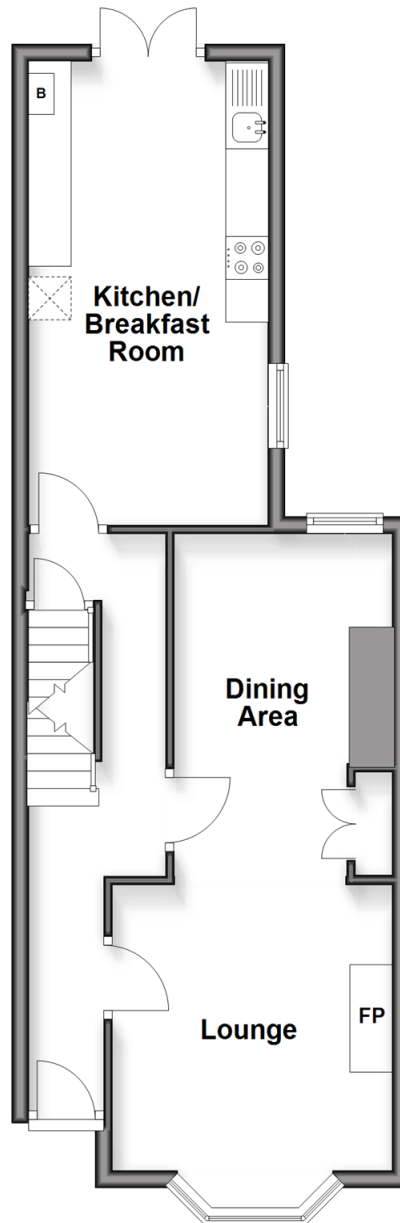
### OUTSIDE

Front Garden

Rear Garden

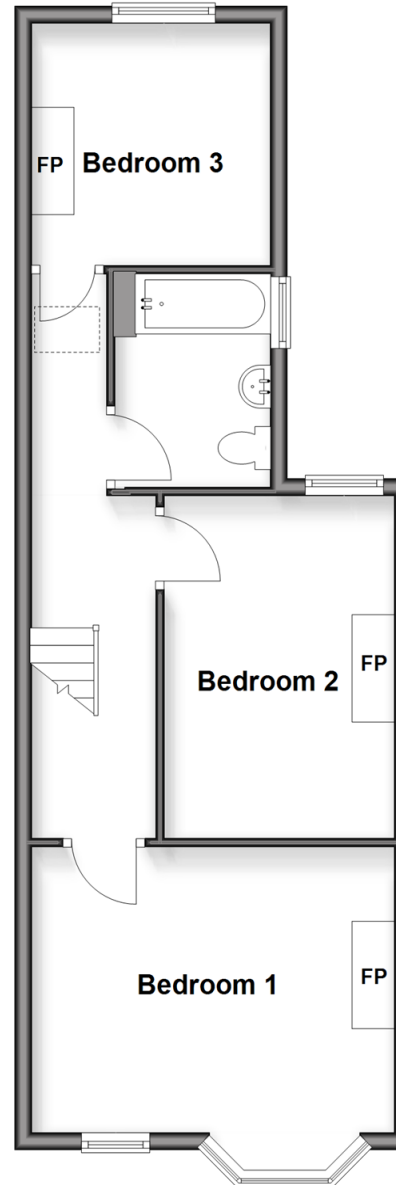
### Ground Floor

Approx. 46.7 sq. metres (502.8 sq. feet)



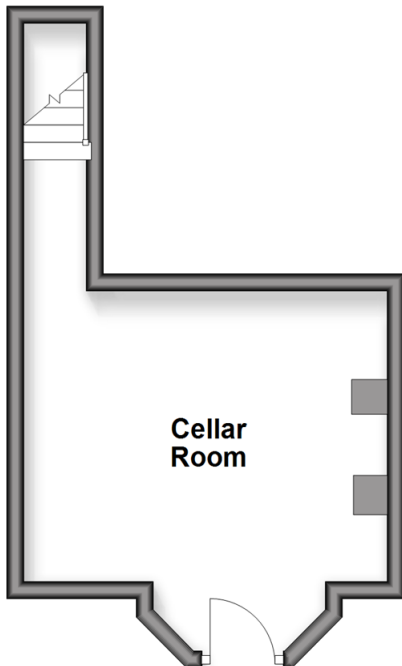
### First Floor

Approx. 47.4 sq. metres (510.6 sq. feet)



### Basement

Approx. 18.2 sq. metres (195.5 sq. feet)





## Main features

- Victorian terraced house with cellar room with separate entrance
- Excellent living space and great sized kitchen/breakfast room
- Ready to move in, but with potential to improve
- Perfect for a first time buy or a buy to let investment
- A short walk to popular local schools and Chatham Railway Station



### Nearest Schools

Primary Schools: St Michael's RC Primary 0.1 miles, Balfour Junior School 0.4 miles  
Secondary Schools: St John Fisher Catholic Comprehensive School 0.1 miles, Fort Pitt Grammar School 0.3 miles



### Transport Information

Train Stations: Chatham 0.2 miles, Rochester 0.6 miles, Strood 1.4 miles



### Address

Pagitt Street, Chatham, Kent, ME4



### Directions

For directions to this property please contact us.



*Wards*  
Helping you move forwards

Call Chatham Branch 01634 841243 ■ [wardsofkent.co.uk](http://wardsofkent.co.uk)



- Legal advice should be taken to verify fixtures/fittings, planning, alterations and/or lease details
- Appliances & services are untested, dimensions are approximate and floor plans are not to scale
- Through a Homewise Home For Life Plan people aged 60+ can secure this property for up to 59% less, by purchasing a Lifetime Lease

EPC RATING	CURRENT:	POTENTIAL:

10430217/20260310/JC/BC