



Meadway Court

Meadway, NW11

£2,200 per month
(£507.69 per week)

Charming 1 bed period apartment with communal garden and porter in Hampstead Garden Suburb. Spacious, unfurnished, ground floor. Lateral living in purpose-built building.

CHESTERTONS



Meadway Court

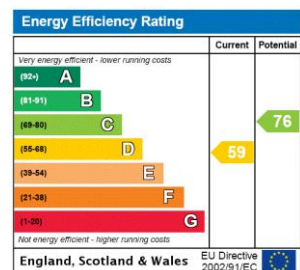
Meadway, NW11

- Parquet Flooring
- Ground Floor Apartment
- Communal Gardens
- Large One Bedroom
- Unfurnished



Discover the epitome of refined living in this delightful ground floor apartment located in a period building. Boasting 1 bedroom and 1 bathroom, this charming property spans 521 sq ft and offers a homely ambiance with its spacious layout. The apartment comes unfurnished, allowing you to personalise the space to your liking. Situated in a sought-after area, the property features a communal garden where you can unwind amidst nature. Benefit from the convenience of a town location, while enjoying the privacy of a lateral living layout. With a caretaker/porter on-site, your security and maintenance needs are well taken care of.

Deposit Required: £2,538.46
Local Authority: London Borough of Barnet
Council Tax Band: D
EPC Rating: D
Furnished, Part Furnished, Unfurnished



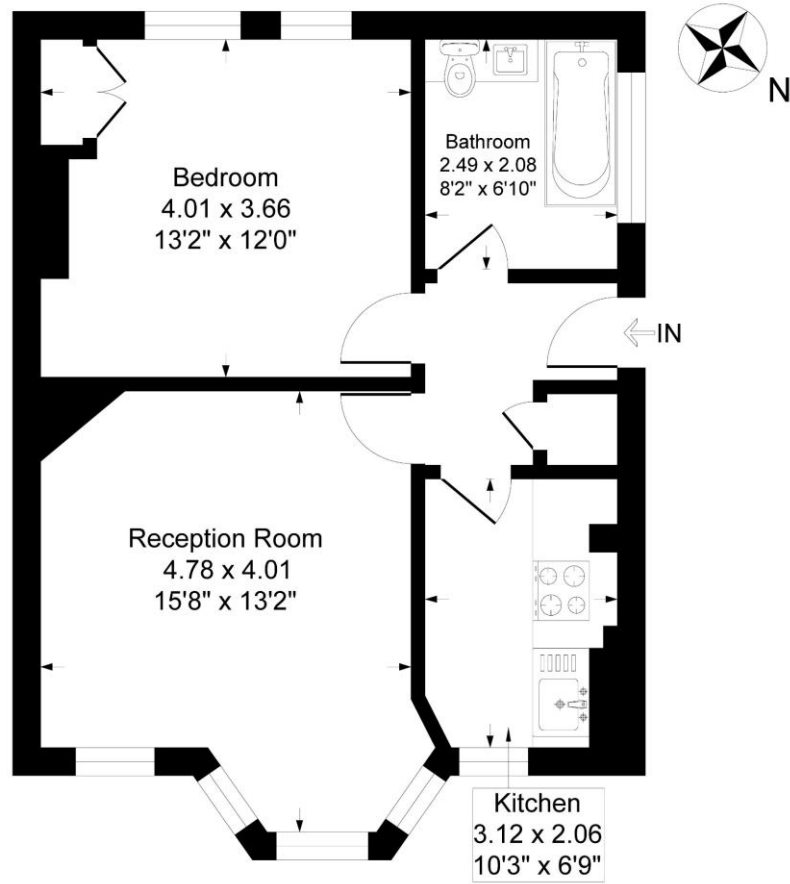
Chestertons Hampstead Lettings

55-56 Hampstead High Street
 Hampstead
 London
 NW3 1QH
 hampsteadlettingsusers@chestertons.co.uk
 02077941125
 chestertons.co.uk

Additional tenant charges apply (fees apply to non-AST tenancies only)
 Tenancy Agreement Fee: £300
 References per Tenant/Guarantor: £60
 Inventory check (approx. £100 – £250 inc. VAT)
 chestertons.co.uk/property-to-rent/applicable-fees

Meadway Court, Meadway, London, NW11

Approximate Gross Internal Floor Area = 49.5 sq m / 534 sq ft



Ground Floor

Illustration for identification purposes only, measurements are approximate, not to scale.

