



The Wynding, Bedlington, NE22 6HW

Offers Over £275,000

Harpers | POWERED BY **exp**™ UK
property people

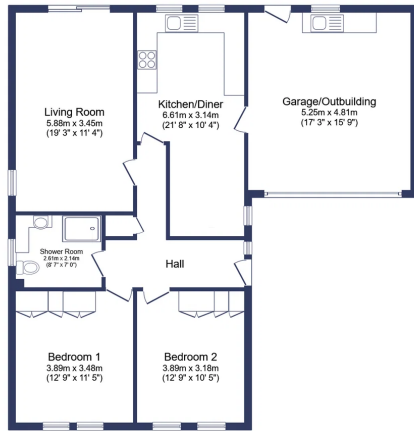
Bedrooms: 2 | Bathrooms: 1 | Receptions: 2

Nestled in a brilliant residential location, this substantial two-bedroom detached bungalow, located in the heart of The Chesters in Bedlington, offers comfortable living with scope for modernisation. The property features a large, dual-aspect living room, thoughtfully designed to open out to the garden, creating an ideal space for relaxation and entertaining. The generous kitchen/diner, which encompasses the original third bedroom, provides ample space for culinary activities and family meals. This home boasts two great sized double bedrooms, both benefiting from convenient built-in storage, ensuring a clutter-free environment. A spacious shower room serves the household. Externally, the property offers a South-facing, two-tier garden, perfect for outdoor enjoyment. Parking is exceptionally well catered for with an integrated double garage featuring an electric roller door, alongside a double driveway. While presented as a charming home, it offers potential for updating in parts, allowing new owners to personalise it to their taste. Situated in a desirable area, this bungalow combines tranquillity with easy access to local amenities.

- Detached Bungalow
- Two Great Sized Double Bedrooms With Built In Storage
- Spacious Shower Room
- Large Dual Aspect Living Room Opening To Garden
- Generous Kitchen/Diner That Encompasses The Original Bedroom Three
- Integrated Double Garage With Electric Roller Door
- South Facing 2-Tier Garden
- Double Driveway
- In Need Of Updating In Parts
- Brilliant Residential Location







Floor Plan

Total floor area: 107.6 sq.m. (1,159 sq.ft.)

This floor plan is for illustrative purposes only. It is not drawn to scale. Any measurements, floor areas (including any total floor area), openings and orientations are approximate. No details are guaranteed, they cannot be relied upon for any purpose and do not form any part of any agreement. No liability is taken for any error, omission or misstatement. A party must rely upon its own inspection(s). Powered by www.propertybox.co



Harpers Property People
80 Windsor Gardens, Bedlington, NE22 5SY

07813 673 606
ali@harpersproperty.com
<https://harpersproperty.com>

