



*G48, Shorefield, Shorefield Country Park, Downton, SO41 0LH*

*£47,500*

**Mitchells**

1963 — TODAY



*G48 Shorefield  
Shorefield Country Park  
Downton  
Hampshire  
SO41 0LH*

A fine example of the Swift Biarritz, situated on a brilliant pitch enjoying the afternoon sunshine in a quiet cul-de-sac location within the popular Shorefield Country Park. The holiday home has been exceptionally well kept and offers three bedrooms, a modern living area with a kitchen/dining room that leads through to the sitting room, a shower room, a separate WC, an area of parking, and decking.

- Swift Biarritz
- 2026 Site Fees: £7,694.68
- 2026 Rates: £915.00
- Second Home Only, Cannot Be Main Residence
- Kitchen/Dining Room
- Sitting Room
- Three Bedrooms
- Shower Room & Separate WC
- Sunny Decking
- Parking Bay



## The Property

Entrance into the kitchen/dining room, with timber effect flooring, a generous range of wall and base units, a contrasting worktop, a stainless steel sink unit with a mixer tap and drainer, a gas cooker with an extractor fan above, and a four seater dining table with chairs.

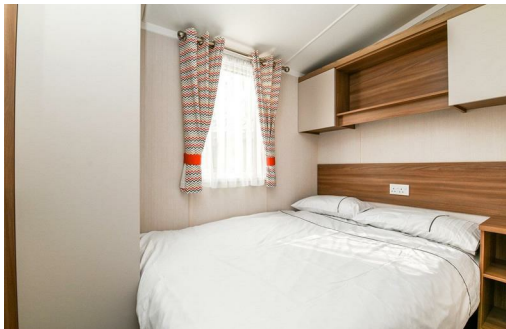
The sitting room has double casement doors opening onto the decking, timber effect flooring, an upgraded corner sofa, and a feature electric fire.

There are three bedrooms: bedroom one is a generous king sized room with fitted furniture, bedroom two has a double bed and wardrobe, and bedroom three is currently used as a twin room with a fitted wardrobe.

The shower room includes a UPVC double glazed window, a radiator, a extractor fan, wall hung storage, a pedestal wash hand basin with a mixer tap, and a large shower cubicle with sliding doors.

The separate WC features a UPVC double glazed window, timber effect flooring, a radiator, a WC, and a pedestal wash hand basin.





## *Gardens & Grounds*

G48 sits on a generous pitch within a quiet cul-de-sac, positioned between the outdoor pool and the other facilities at Shorefield Country Park. An area of tarmac provides space for off road parking, with a paved patio pathway leading to the west facing decking area.

## *Site Fees & Charges*

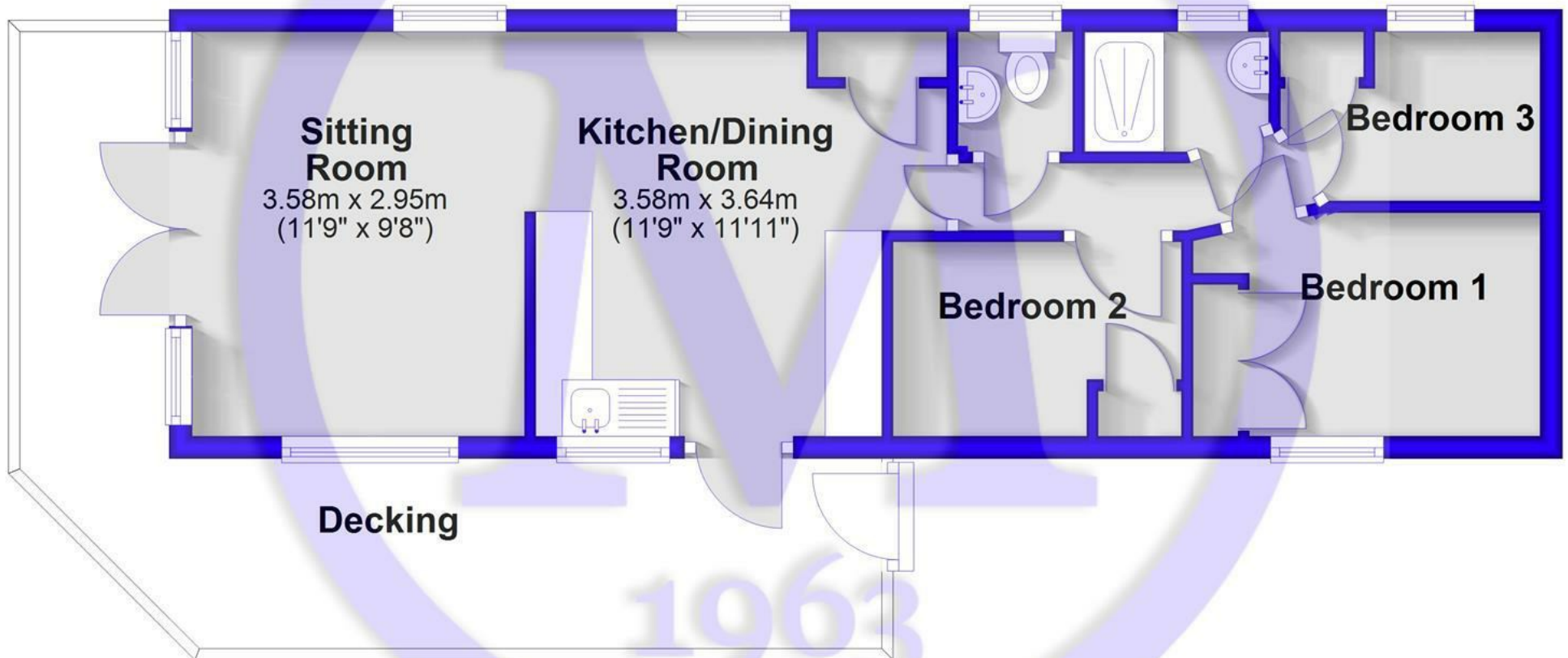
2026 Site Fees: £7,694.68

2026 Rates: £915.00

License Ends:

## Floor Plan

Approx. 42.7 sq. metres (460.0 sq. feet)



Total area: approx. 42.7 sq. metres (460.0 sq. feet)

## Situation

Located on the southern edge of the New Forest National Park and just a short stroll from the shingle beaches of Milford on Sea, the award-winning Shorefield Country Park offers an idyllic spot for the ultimate getaway. The park boasts a wide range of excellent facilities, including heated indoor and outdoor pools, a gym and day spa, bars, a restaurant, a fishing lake, pet-friendly areas, play areas, tennis courts, and live family entertainment.

At Shorefield Country Park, site fees run from November to October, while the rates are charged from April to March. These fees can be paid either over six or twelve months. Gas and electricity are metered, with bills issued in May and November. The park is open from 10th February to 5th January, providing a fantastic year-round retreat.





[Mitchells.uk.com](http://Mitchells.uk.com)  
[info@mitchells.uk.com](mailto:info@mitchells.uk.com)  
01425 616411

Centenary Buildings  
8-10 Old Milton Road  
New Milton  
Hampshire  
BH25 6DT

**Mitchells**  
1963 — TODAY

