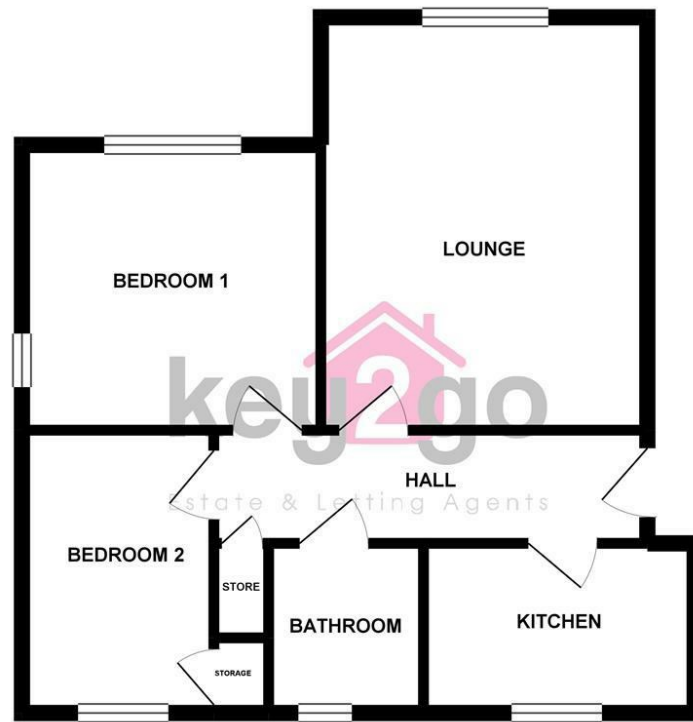


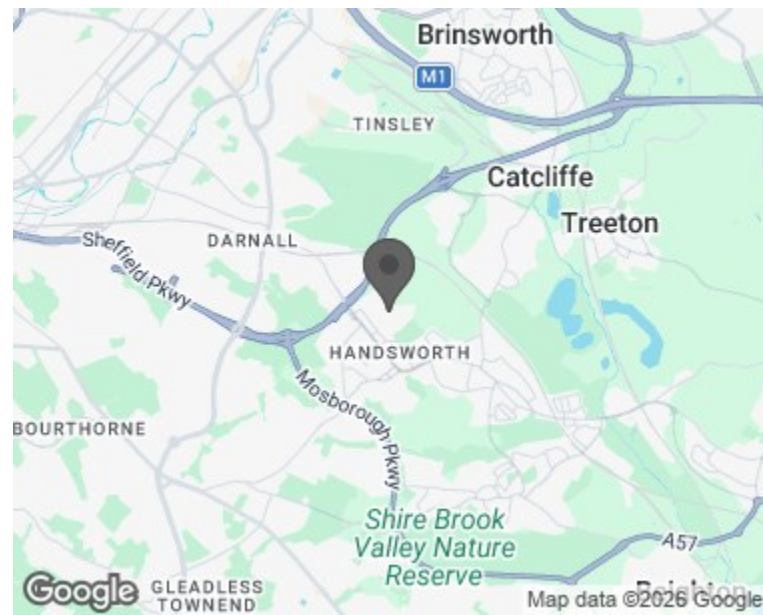
Floorplan

GROUND FLOOR

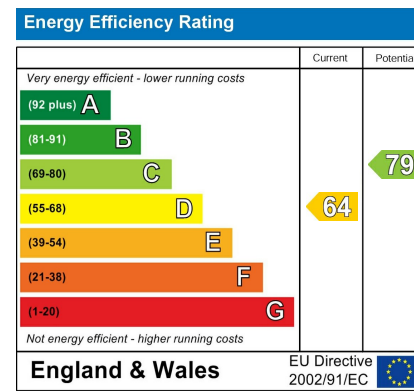


Whilst every attempt has been made to ensure the accuracy of the floorplan contained herein, measurements of doors, windows, rooms and any other items are approximate and no responsibility is taken for any error, omission or mis-statement. This plan is for guidance purposes only and should be used as such by any prospective purchaser. The services, systems and appliances shown have not been tested and no guarantee is given for their availability or efficiency can be given.
Made with Metropix ©2019

Area Map



Energy Efficiency Graph



Viewing

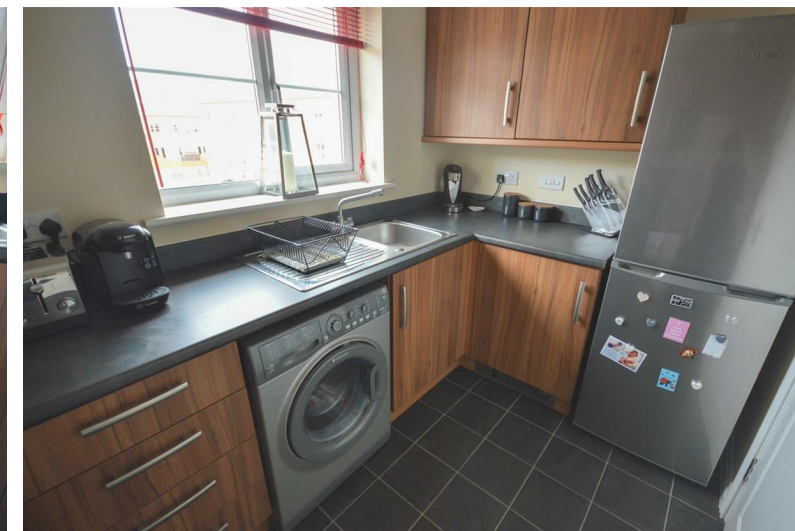
Please contact our Lettings Team Office on 0114 2478819 if you wish to arrange a viewing appointment for this property or require further information.

These particulars, whilst believed to be accurate are set out as a general outline only for guidance and do not constitute any part of an offer or contract. Intending purchasers should not rely on them as statements of representation of fact, but must satisfy themselves by inspection or otherwise as to their accuracy. No person in this firm's employment has the authority to make or give any representation or warranty in respect of the property.



35 Doveholes Drive
Handsworth, Sheffield, S13 9DR

£850 PCM



35 Doveholes Drive

Handsworth, Sheffield, S13 9DR

£850 PCM



Nestled in the charming area of Handsworth, Sheffield, this modern flat on Doveholes Drive presents an excellent opportunity for those seeking a comfortable and convenient living space. The property boasts two well-proportioned bedrooms, making it ideal for small families, couples, or individuals looking for extra room.

The flat features a welcoming reception room, perfect for relaxation or entertaining guests. The bathroom is thoughtfully designed, catering to all your daily needs. With a parking space available for one vehicle, you will find it easy to come and go as you please, a valuable asset in this bustling area.

Set to be available for new tenants from mid to late June, this property is sure to attract interest. Early viewing is highly recommended to fully appreciate the modern amenities and the inviting atmosphere this flat has to offer.

In summary, this flat on Doveholes Drive is a delightful choice for anyone looking to settle in a vibrant community while enjoying the comforts of modern living. Don't miss out on the chance to make this lovely flat your new home.

This beautifully presented two bedroom penthouse apartment with stunning views. Modern throughout and well maintained. Intercom system, allocated parking and communal gardens. Kitchen, lounge, two bedrooms and bathroom.

