

Aldreds
Estate Agents



61 Magdalen Way

Gorleston, Great Yarmouth, NR31 7BS

£190,000



61 Magdalen Way

Gorleston, Great Yarmouth, NR31 7BS

This mid terraced house is offered for sale with no onward chain and benefits from gas central heating, UPVC double glazed windows and a driveway with off road parking for 2 vehicles. There is a good size enclosed landscaped rear garden. The property is ideally located for access to local shops and Gorleston High Street with a bus stop opposite.

Entrance Hall

10'0" x 8'2" (3.05m x 2.49m)

UPVC entrance door with double glazed panels. Tiled floor. Radiator. Electronic thermostat control for heating. Telephone point. Built-in under stairs storage cupboard. Staircase with turned wood balustrade to first floor landing. Coved and textured ceiling. UPVC double glazed window to front aspect.

Lounge

15'4" x 10'1" (4.67m x 3.07m)

Radiator. Cable television point. Dado rail. Coved and textured ceiling. UPVC double glazed window to front aspect.

Kitchen

12'5" x 8'5" (3.78m x 2.57m)

Worktops with cupboards and drawers below. Single drainer sink with mixer tap. Tiled splashback. Matching wall cupboards. Gas cooker point. Utility space below worktop with plumbing for washing machine. Utility space is below worktop for refrigerator and freezer. Tiled floor. Radiator. Built-in storage cupboard. Built-in storage cupboard with a wall mounted gas fired combination boiler and a UPVC double glazed window to rear. Coved and textured ceiling. UPVC double glazed window to rear aspect. UPVC door with double glazed panel to the rear garden.

Dining Room

8'5" x 8'0" (2.57m x 2.44m)

Radiator. Coved and textured ceiling. UPVC double glazed window to rear aspect.

First Floor

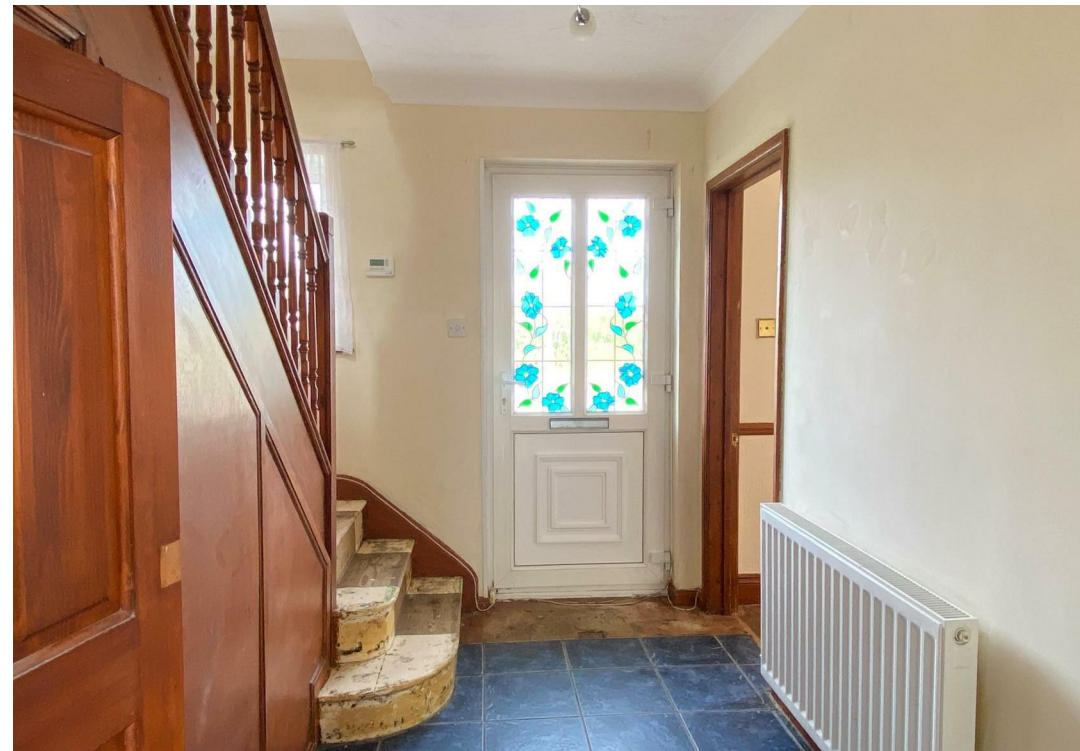
Landing

Built-in linen cupboard with slatted shelves. Coved and textured ceiling with loft access hatch and an aluminium extending loft ladder.

Bedroom 1

15'5" x 10'0" (4.70m x 3.05m)

Radiator. Coved and textured ceiling. Two UPVC double glazed windows to front aspect.





Bedroom 2

9'11" x 8'8" plus 6'4" x 5'5" (3.02m x 2.64m plus 1.93m x 1.65m)

Radiator. Coved and textured ceiling. UPVC double glazed window to rear aspect.

Bedroom 3

10'0" x 7'1" plus over stairs recess (3.05m x 2.16m plus over stairs recess)

Radiator. Picture rail. UPVC double glazed window to front aspect.

Bathroom

Fully tiled walls and a panelled bath with mixer tap and shower attachment and a mixer shower above. Pedestal wash basin. Tiled floor. Radiator. Coved and textured ceiling. UPVC double glazed window to rear.

Separate WC

Fully tiled walls. White WC. Tiled floor. Coved and textured ceiling. UPVC double glazed window to rear.

Outside

The entire front garden has been brick weaved to provide parking spaces. A shared passageway leads to a gate to the rear garden which is fully enclosed by fencing and landscaped with brick pathways, a circular paved patio area and a further large raised patio area with a brick built barbecue. Raised brick garden pond with power supply. Three brick built storage sheds.

Tenure

Freehold.

Services

Mains water, gas, electricity and drainage are connected.

Council Tax

Great Yarmouth Borough Council - Band B

Location

Gorleston-on-Sea is a coastal town 2 miles from Great Yarmouth centre and has a varied selection of local shops * Golf Course * Modern District hospital * Schools for all ages * Library * Regular bus services to the main shopping areas and a sandy beach.

Directions

From the Gorleston office head South along the High Street. At the traffic lights turn right onto Church Lane, continue over the roundabout and at the traffic lights turn left into Magdalen Way where the property can be found on the left hand side.

what3words

///leaky.running.unafraid

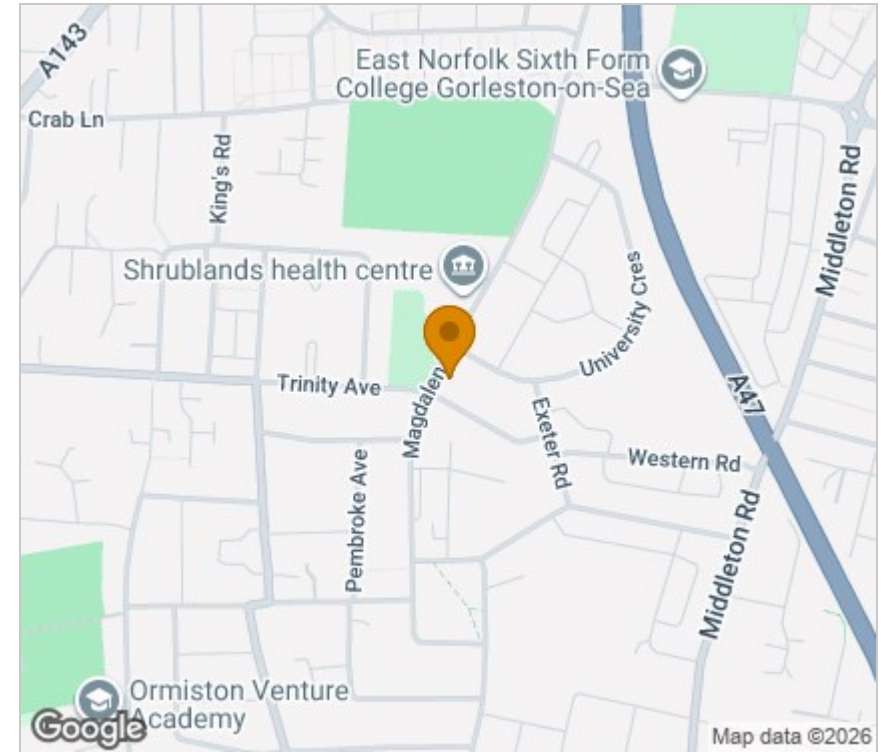
Ref: G18491/04/26



Floor Plan



Area Map



Viewing

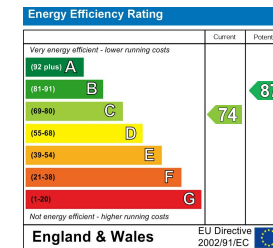
Please contact our Aldreds Gorleston Office on 01493 664600 if you wish to arrange a viewing appointment for this property or require further information.

Disclaimer

These particulars are issued on an understanding that all negotiations shall be conducted through Messrs. Aldreds. Please note: Messrs. Aldreds for themselves and for the vendors or lessors of this property whose agents they are given notice that: 1. Particulars are set out as a general outline only for guidance of intending purchasers or lessees, and do not constitute nor constitute part of, an offer or contract. 2. All descriptions, dimensions, references to condition and necessary permissions for use and occupation, and other details are given without responsibility and any intending purchasers or tenants should not rely on them as statements or representations of fact but must satisfy themselves by inspection or otherwise as to the correctness of each of them. 3. No person in the employment of Messrs. Aldreds has any authority to make or give any representation or warranty whatever in relation to this property. 4. If you are proposing to visit the property and are travelling some distance please check with Aldreds on the issue of availability prior to travelling. 5. Aldreds Property Consultants and associated services may offer additional services to the prospective purchaser for which they will be entitled to receive a commission.

Aldreds are pleased to be working with Mortgage Advice Bureau. They're an award-winning mortgage broker with over 1,400 advisers across the UK, and have access to over 12,000 mortgage products from over 90 lenders. Aldreds Estate Agents Ltd receive a commission of £200 on each completed case. Your home may be repossessed if you do not keep up repayments on your mortgage. There may be a fee for mortgage advice. The actual amount you pay will depend upon your circumstances. The fee is up to 1%, but a typical fee is 0.3% of the amount borrowed. Mortgage Advice Bureau is a trading name of Mortgage Seeker Limited which is an appointed representative of Mortgage Advice Bureau Limited and Mortgage Advice Bureau (Derby) Limited which are authorised and regulated by the Financial Conduct Authority. Mortgage Seeker Limited Registered Office: Lovewell Blake, Sixty Six North Quay, Great Yarmouth, Norfolk, NR30 1HE. Registered in England Number: 03721415. 6. Potential purchasers should check with their providers that the broadband and mobile phone coverage they would require is available.

Energy Efficiency Graph



149 High Street, Gorleston, Norfolk, NR31 6RB

Tel: 01493 664600 Email: gorleston@aldreds.co.uk <https://www.aldreds.co.uk/>

Registered in England Reg. No. 08945751 Registered Office: 17 Hall Quay, Great Yarmouth, Norfolk NR30 1HJ

Directors: Mark Duffield B.S.c. FRICS. Dan Crawley MNAEA Paul Lambert MNAEA