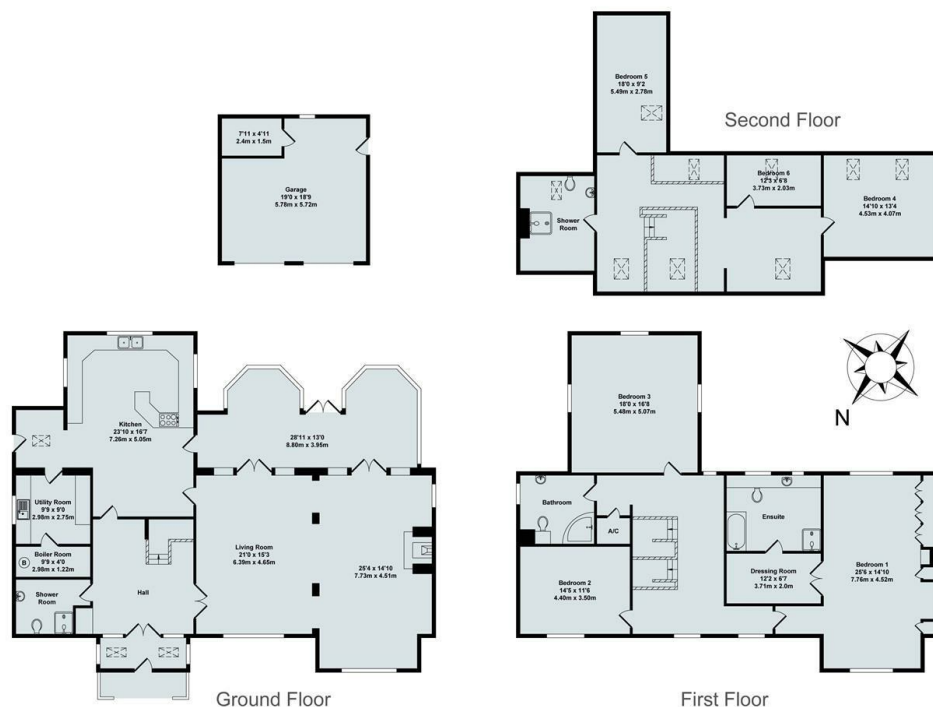




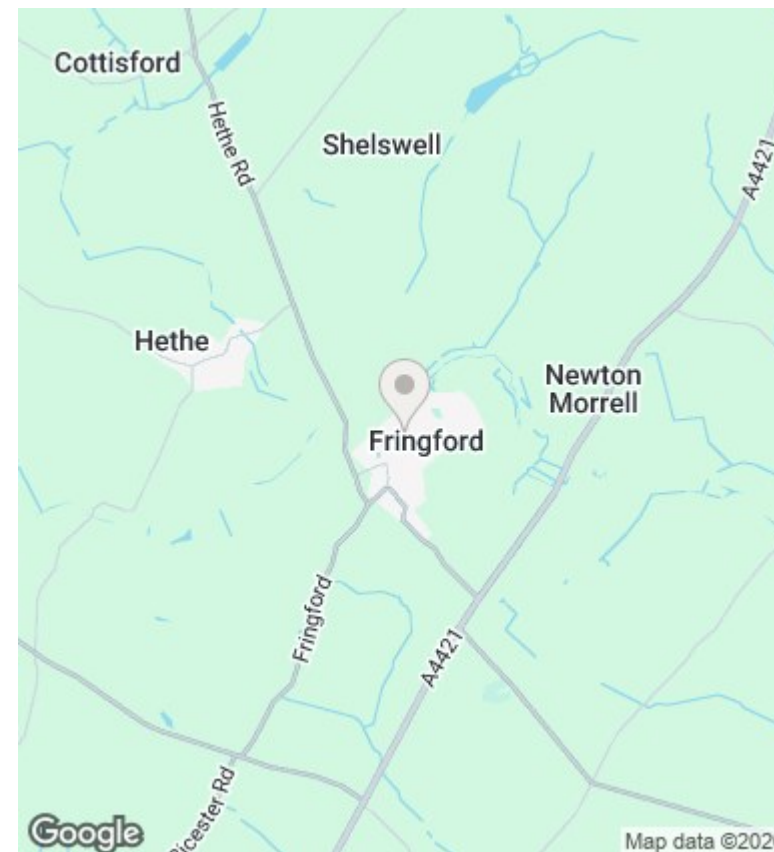
## Hadfield House Little Paddock, Fringford, Bicester, OX27 8EJ

£3,500 - 25th April 2026.

- Six bedroom detached house
- South facing gardens
- Double garage
- Mains water and electricity
- Four bathrooms
- Oil fired central heating
- Council Tax Band G
- Impressive conservatory
- Off street parking
- EPC rating D



Total Approx. Floor Area 4820 Sq.Ft. (447.80 Sq.M.)  
 All items illustrated on this plan are included in the "Total Approx Floor Area"



### Directions

### Viewings

Viewings by arrangement only. Call 01869 226888 to make an appointment.

### Council Tax Band

G

### EPC Rating:

D

Energy Efficiency Rating		Current	Potential
<i>Very energy efficient - lower running costs</i>			
(92 plus)	A		
(81-91)	B		
(69-80)	C		
(55-68)	D	68	72
(39-54)	E		
(21-38)	F		
(1-20)	G		
<i>Not energy efficient - higher running costs</i>			
<b>England &amp; Wales</b>		EU Directive 2002/91/EC	