

Guide Price £225,000



## 11 Gerbera Way, Cullompton, Devon, EX15 1UW

- Beautifully presented throughout
- Open plan lounge/diner with French doors to garden
- Downstairs cloakroom
- Enclosed rear garden, with side access
- Close proximity to J28 of the M5
- Modern fitted kitchen, with some integrated appliances
- Two double bedrooms
- Family bathroom
- Off street parking for two vehicles
- Quick access to Exeter and Taunton, 15-25 mins

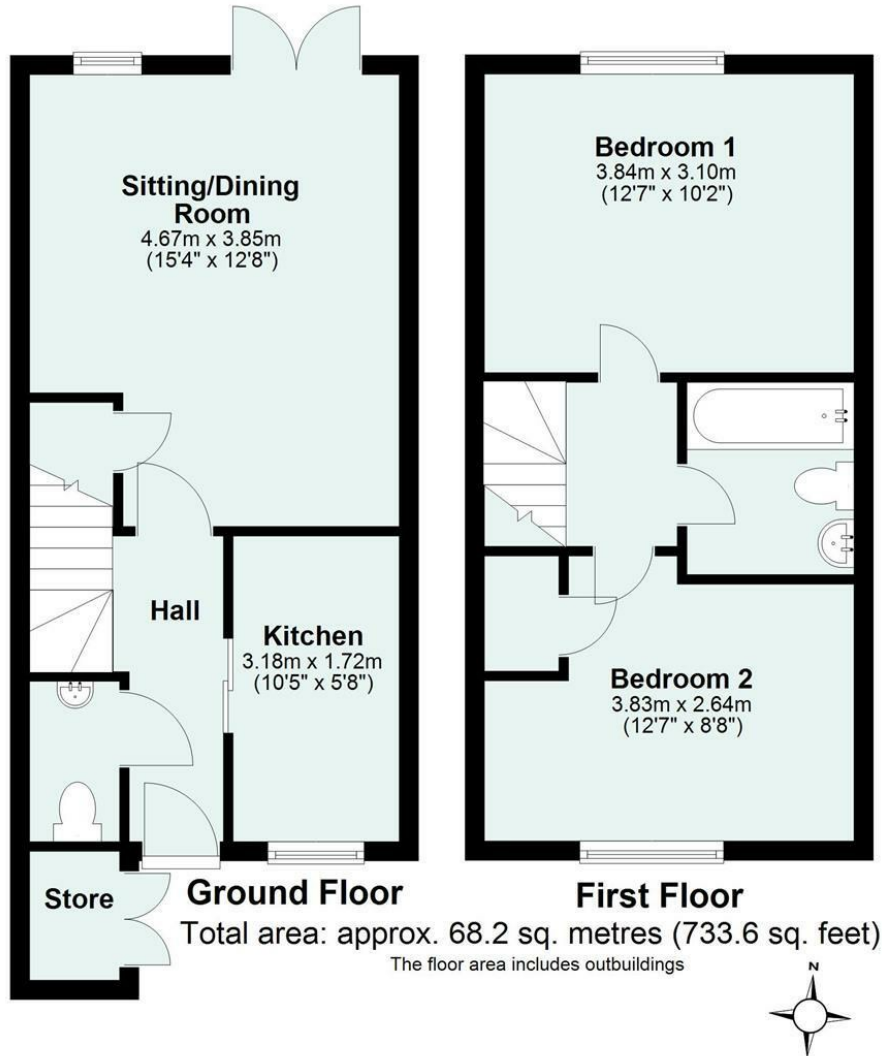
**Sales, Lettings, Mortgages:**

Bampton 01398 332006 | Cullompton 01884 32100 | Tiverton 01884 253500



\*Watch the Seddons Video Tour\*

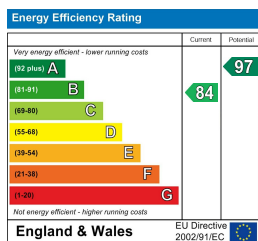
A well-presented modern home, offering two double bedrooms with downstairs cloakroom, enclosed rear garden and off-street parking. Excellent location with quick access to the motorway for commuting.



## Council Tax Band

B

## EPC Rating



## Viewings

Viewings by arrangement only. Call 01884 32100 to make an appointment.

## Directions

DIRECTIONS: