



The Studio, Eyot Green, W4  
Guide Price £850,000

**WHITMAN & CO.**

SALES · LETTINGS · COMMERCIAL

- 19'4 first floor Studio Room with a full height northern light
- Under floor heating throughout
- Feature stone spiral staircase
- 20'3 reception room
- Private west facing garden
- No onward chain

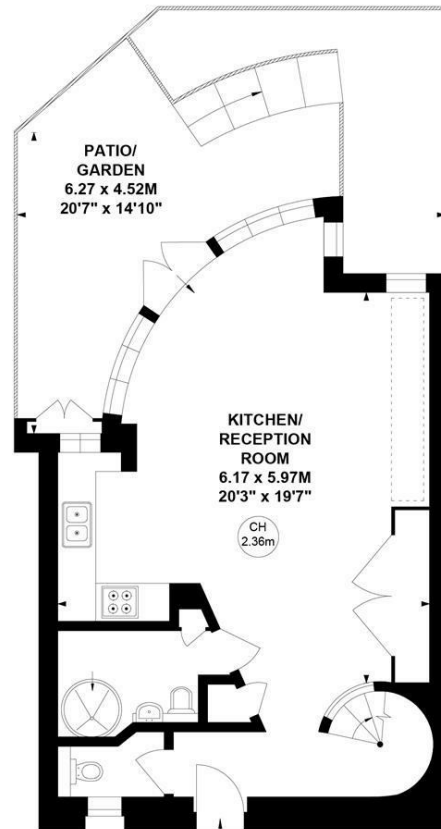
Tenure - Freehold  
Local Authority - Hounslow  
Council Tax - Band E

## THE PROPERTY

A unique freehold Artist Studio ideally located beside Chiswick Mall with both a private garden and a communal riverside garden.

The property features a 19'4 first floor Studio Room with a full height northern light, a 20'3 reception room leading onto a private west facing garden, fully integrated kitchen, shower room, large entrance hall, a feature stone spiral staircase, with underfloor heating throughout. There is also free access to the communal riverside garden and central garden.

Ideally located in this small and exclusive, private development offering close proximity to numerous amenities. Offered with no onward chain.



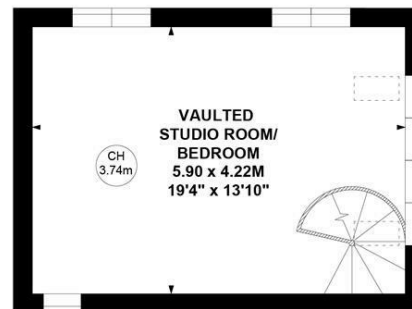
Ground Floor



## Eyot Green, W4

Approximate Gross Internal Area  
70.45 sq m / 758 sq ft

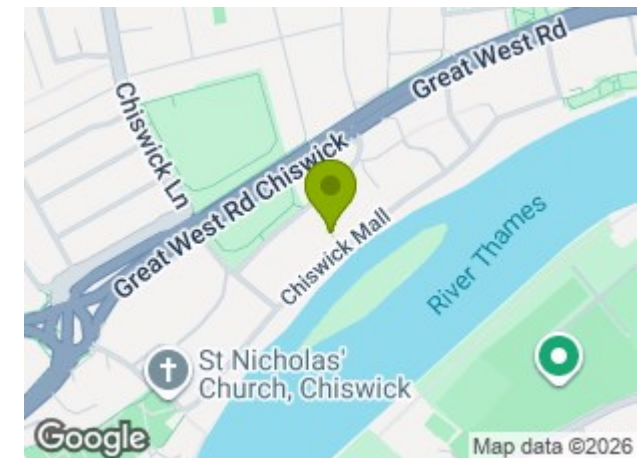
Key :  
CH - Ceiling Height



First Floor

Not to scale, for guidance only and must not be relied upon as a statement of fact.  
All measurements and areas are approximate only

## SITUATION



5-7 Turnham Green Terrace, Chiswick, London, W4 1RG

Tel 020 8747 8800

E-mail [sales@whitmanandco.com](mailto:sales@whitmanandco.com)

Website [www.whitmanandco.com](http://www.whitmanandco.com)